

ORGANISATION

OF THE MARITIME HYDROGRAPHIC SERVICE IN POLAND

The following informations relating to the organisation of the maritime hydrographic service in Poland have been supplied to the International Hydrographic Bureau by courtesy of the head of the Hydrographic Bureau of the Polish Navy at Warsaw.

Authority in matters concerning the study of the sea and the safety of navigation in the territorial waters of Poland is shared among the following official institutions :

- A. The Navy.
- B. Marine Department (Ministry of Commerce and Industry) ;
- C. Meteorological Institute (Ministry of Communications).

These matters are dealt with as follows :

- (1) in the Navy, by the Hydrographic Bureau :
- (2) in the Marine Department of the Ministry of Commerce and Industry, by the Marine Office (Urząd Morski w Gdyni) ;
- (3) in the Meteorological Institute of the Ministry of Communications, by the Maritime Section (Maritime Observatory at Gdynia and Magnetic and Meteorological Station at Hel).

The distribution of authority among these three official departments is as follows :

- A. All matters concerning hydrography, particularly with respect to the Navy, both from the international and interministerial point of view, as well as questions of supply of navigational material to the Navy, come under the Hydrographic Bureau of the Navy.

This service comprises :

The organisation and planning of coastal surveys ; publications such as charts, books, information ; the elaboration of sailing directions, instructions and printed matter ; budget and purchasing ; replenishment of material ; superintendence over the safety of navigation in territorial waters as well as its good order up to the furthest limits ; instruction of the hydrographic personnel (officers and petty officers) ; and the various matters concerning hydrography and supplies for navigation.

Internally, the Hydrographic Bureau is divided into two branches, hydrography proper and supplies for navigation.

The Hydrographic Bureau of the Navy is the head-quarters of the hydrographic service being also a department of the Admiralty, with its seat at Warsaw.

Its branches are :

(a) Section of Surveys and Investigations, directly under the Head of the Hydrographic Bureau at Warsaw ;

(b) Supply Service for Navigational Material, a branch of the Naval Harbour Administration at Gdynia, and directly under it.

The scope of the Section of Surveys and Investigations comprises :

(1) carrying out the various schemes of surveys and studies both at sea and on the coasts ;

(2) collation of the results with a view to publication ;

(3) drawing up of instructions concerning navigation, chart catalogue, manuals, etc ;

(4) producing both cartographic and bibliographic publications ;

(5) collaboration with coastal institutions of a similar nature from the point of view of the organisation and control of navigation ;

(6) construction and maintenance of auxiliary safety devices at sea and on the coasts ;

(7) instruction of the personnel from a professional point of view.

For surveying purposes this Section has a surveying ship at its disposal, provided with all necessary gear and instruments.

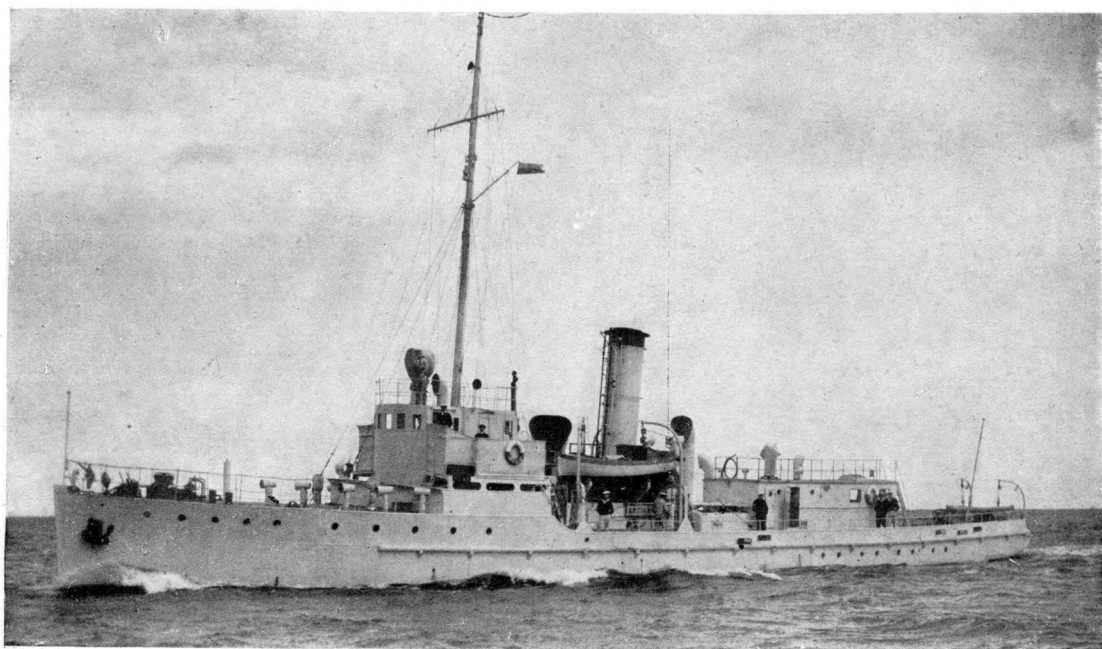
The Supply Service for Navigational Material is responsible for the replenishment of vessels of the Fleet with navigational instruments, charts and books ; it purchases, stocks and keeps up to date the charts and sailing directions ; it takes charge of the meteorological service of the Naval harbour, trials and study of navigational instruments, elaboration of the resulting propositions, definitions of trials and instructions.

B. From the point of view of the safety of navigation, the scope of the Marine Office includes construction, maintenance and working of lighthouses, buoys, beacons and signal stations for navigation and fishery ; construction, maintenance and working of radio-beacons and fog signal stations ; marking of coasts and channels ; pilotage ; life-saving stations ; wrecks (removal or recovery) ; hydrotechnical surveys in commercial and fishing harbours ; sweeping work ; traffic management for merchant ships in commercial harbours and roadsteads ; information on navigational subjects.

C. The functions of the Maritime Section of the State Meteorological Institute comprise :

Astronomical observations and the publication of the resulting scientific works ; the meteorological, aerological, synoptic and coastal ice service ; storm-warning and wind stations ; hydrological and hydrographical studies (1) (variations of level, temperature, currents, chemical composition of the water, density, limpidity, silting) ; determination of the elements of terrestrial magnetism at sea and on the coasts, as well as the variation of these elements ; preparation and publication of scientific studies in the domain of maritime hydrology,

(1) In collaboration with the Central Hydrographic Bureau of the Ministry of Communications.



O.R.P. *MEWA*

meteorology, climatology, aerology of the coasts, magnetism ashore and on board ship, etc., with a view to both the development of these sciences and their adaptation to navigation by the improvement of inventions from the instrumental point of view; scientific examination and tests of navigational instruments for Polish vessels, as well as for foreign vessels by request; compass correction in merchant ships; checking chronometers; time signals; correction of charts and sailing directions for merchant ships; sale of charts and sailing directions; repair of nautical instruments at the request of merchant ships, both Polish and foreign, besides — if necessary — of the Polish Naval Hydrographic Bureau; notices to mariners.

THE POLISH SURVEYING SHIP O.R.P. *MEWA*. (*)

The *Mewa* is the second surveying ship of the Polish Navy.

Originally a German minesweeper, built at Hamburg in 1918 for service in the Baltic, she was acquired by the Polish Navy in 1920; from then until early in 1929 she performed the same duties as in Germany, after which she was paid off into reserve.

After complete reconstruction, when she was fitted out for surveying purposes, the *Mewa* was commissioned as a surveying ship on the 14th June 1932.

DETAILS.

Displacement	280 tons.
Length	42 metres (137.8 ft.).
Breadth	6 metres (19.7 f.t.).
Draft	1.7 metres (5 ft. 7 in.).
Horse-power	2 × 375.
Speed.....	12 knots.

Accommodation for 4 officers and 38 ratings

Boats: 1 power-driven and 2 pulling boats

Hydrographic equipment: 1 deep-sea sounding machine (65 kg. fish-lead, 143 lbs., with Polish-built winch); 2 shallow water sounding machines (40 kg. fish-lead, 66 lbs., with WARLUZEL winch).

Echo sounding apparatus will shortly be installed. The vessel is also provided with several hand leads, hydrographic circles of the A. LEPETIT type made in France, CORADI pantographs and every requirement for draughtsmanship.



(*) O.R.P. (Okret Rzeczpospolitej Polskiej) stands for "Ship of the Polish Republic" and is only applied to warships, like "H.M.S." in England.