

## SURVEYING BOATS (Continued).

by

REAR-ADMIRAL, J. D. NARES, D.S.O., PRESIDENT OF DIRECTING COMMITTEE.

---

### NORWAY.

There are eight motor boats attached to the Norwegian Hydrographic Service varying in length from 25 to 33 feet, with petrol motors of from 10 to 36 H.P.

Dinghys with outboard motors are also used for special development of shoals and locating and marking the coast line.

Details of some of these boats are as follows :

- (1) 28 FOOT (8.53 METRE) MOTOR BOAT : LATEST TYPE 1933.  
(See Plan N<sup>o</sup> 30 and Fig. 29)

		Feet	Inches	Metres	
<i>Dimensions of Hull.</i>	{	Length overall.....	28	00	8.53
		Beam.....	7	06	2.29
		Draft .....	2	06	0.76

These boats are fitted with a KITCHEN Rudder. Their crew consists of a Surveyor and three men. The leadsmen and sounding machine are forward; engine aft. The surveyor's compartment is protected by a glass screen at the forward end, with canvas side screens and sun awning. The boat is steered by means of a wheel at the after end of the surveyor's compartment.

The boats are equipped with a mast and lugsail.

*Engine.* — Fitted with a 24 H.P. motor. Fuel used, petrol.

- (2) 27 1/2 FOOT (8.38 METRE) MOTOR BOAT.  
(See Fig. 30. No plans available)

		Feet	Inches	Metres	
<i>Dimensions of Hull.</i>	{	Length overall.....	27	06	8.38
		Beam.....	7	00	2.12
		Draft .....	—	—	—

In this older type of boat the engine-room is amidships, surveyor's compartment aft and leadsmen forward. The forward compartment is equipped with an engine-driven LUCAS Sounding Machine and a reel for the hand lead line.

The boat is fitted with a KITCHEN Rudder, steered either by means of a tiller aft or an auxiliary wheel at the foremost end of the engine compartment. The surveyor's and engine compartments are protected by a half cabin roof at their foremost ends.

PLAN N° 30

Norway — 28 Foot (8.53 metres) Motor Boat ; Latest Type 1933

Norvège — Embarcation à moteur de 28 pieds (8 m. 53) ;  
Dernier modèle 1933

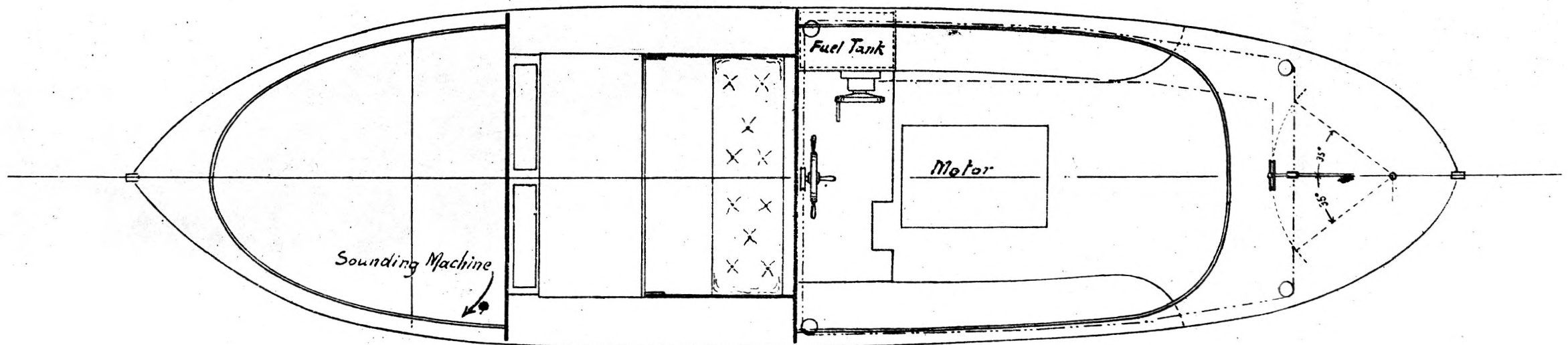
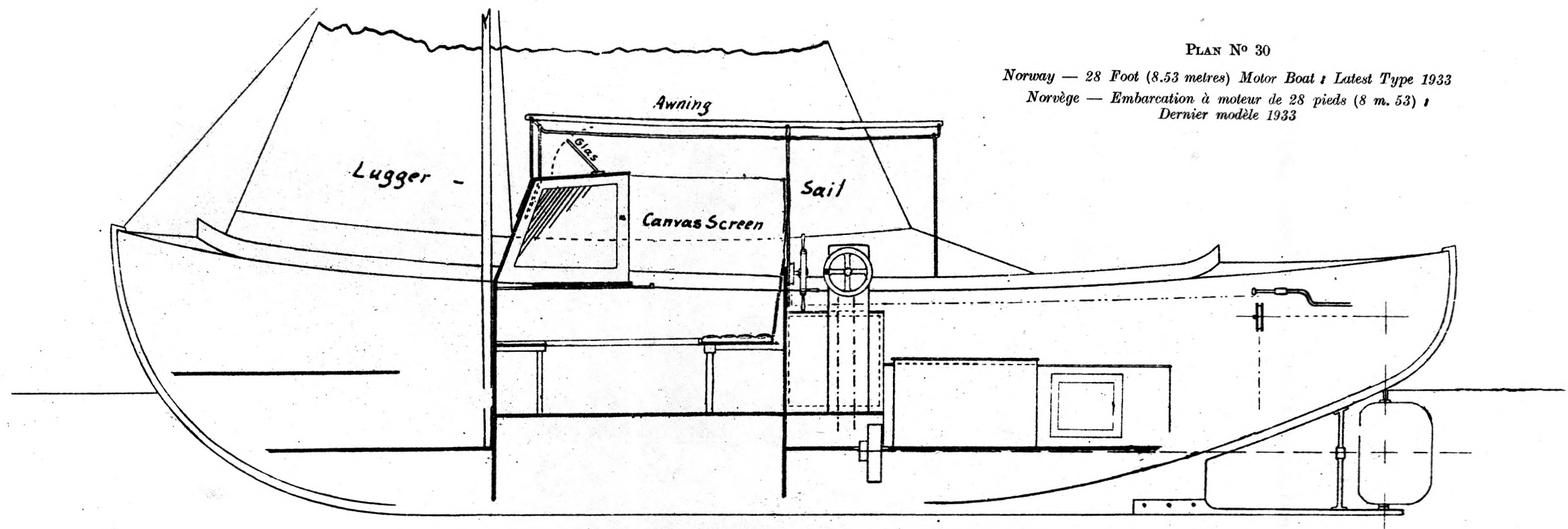




FIG. 29

28 Foot (8.53 metre)  
Motor Boat : Latest  
type 1933.

Embarcation à moteur  
de 28 pieds (8 m. 53) :  
dernier modèle 1933.

FIG. 30

27 1/2 Foot (8.38 metre) Motor  
Boat.

Embarcation à moteur de 27 pieds  
1/2 (8 m. 38).

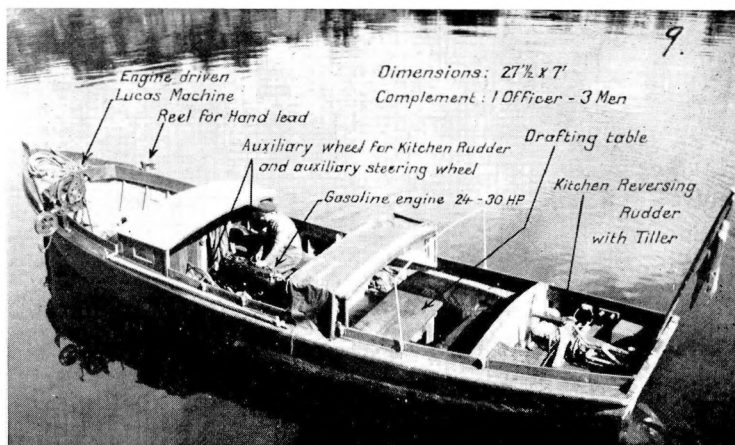


FIG. 31

Dinghy, with outboard motor.

Youyou, avec moteur hors-bord.



CANADA

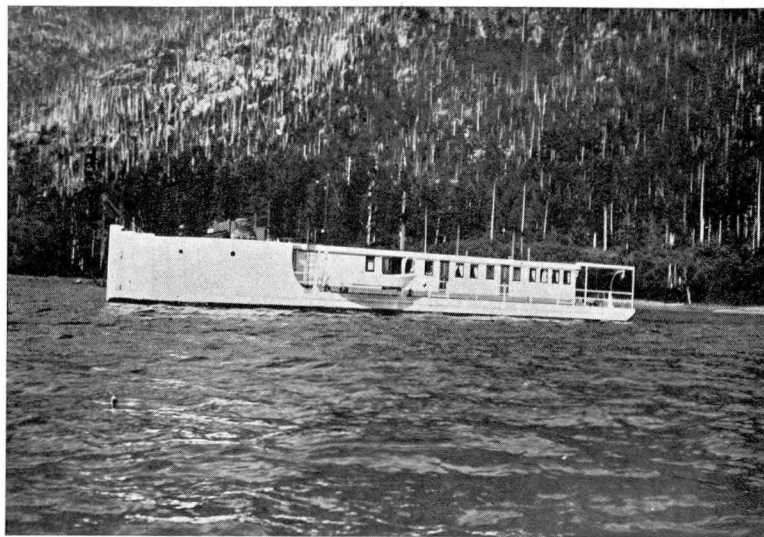


FIG. 32

*House Boat "Pender"*

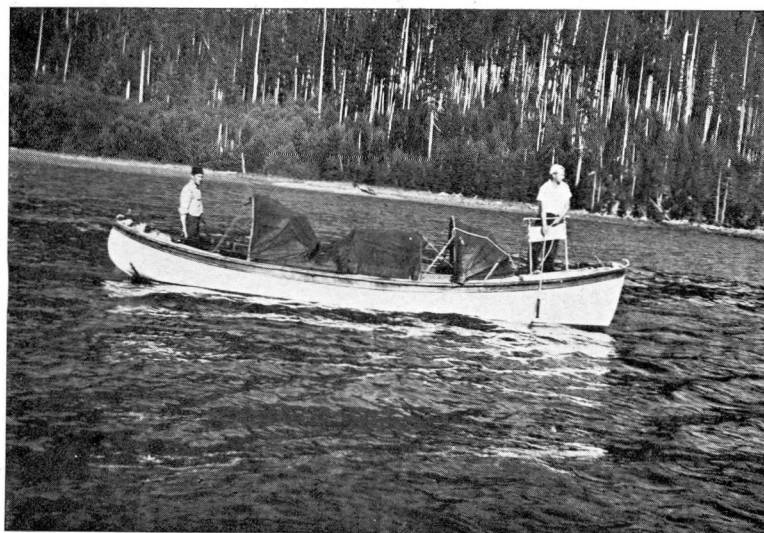


FIG. 33

*27 foot (8.23 metre) Motor Launch of House Boat "Pender"*  
*Embarcation à moteur de 27 pieds (8 m. 23) de l'House Boat "Pender"*

The crew consists of one Officer and 3 men.  
*Engine.* — Fitted with a 24-30 H.P. gasoline engine.

(3) DINGHY—WITH OUTBOARD MOTOR.  
(See Fig. 31).

A photograph of a dinghy as used for coast lining etc. is shown, but no plans are available.

CANADA (*Continued*).

In *Hydrographic Review* Vol. X, No 2, November 1933, page 78, a description was given of the HOUSE BOAT "PENDER" used on the Pacific Coast. A photograph of this vessel has now been received from the Canadian Hydrographer (Fig. 32) together with that of one of the two open 27 foot Motor Launches (Fig. 33) with which she is equipped.

