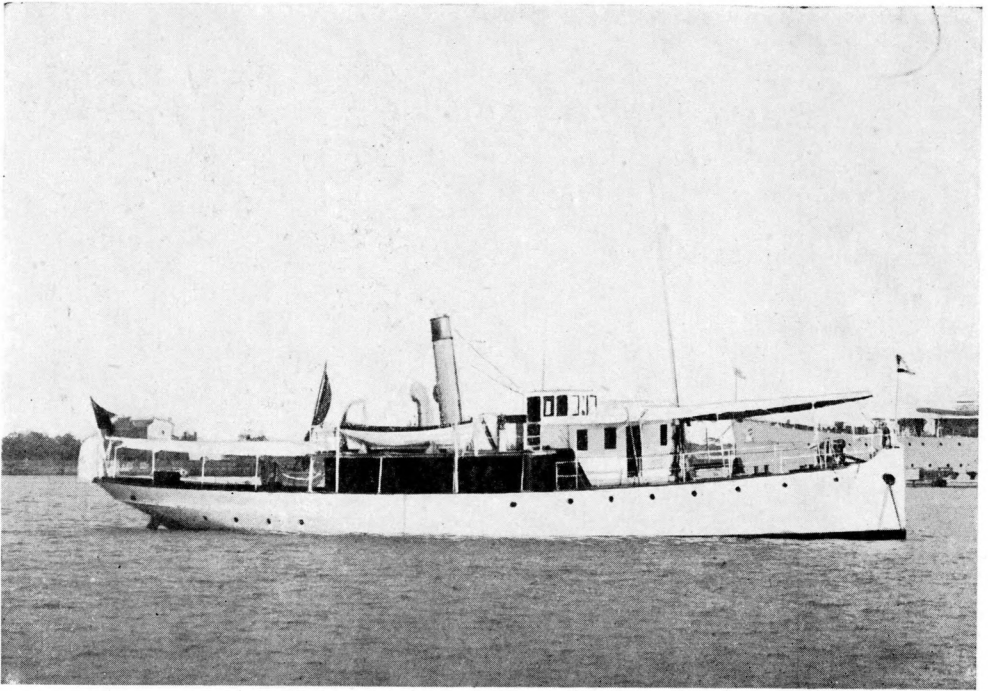
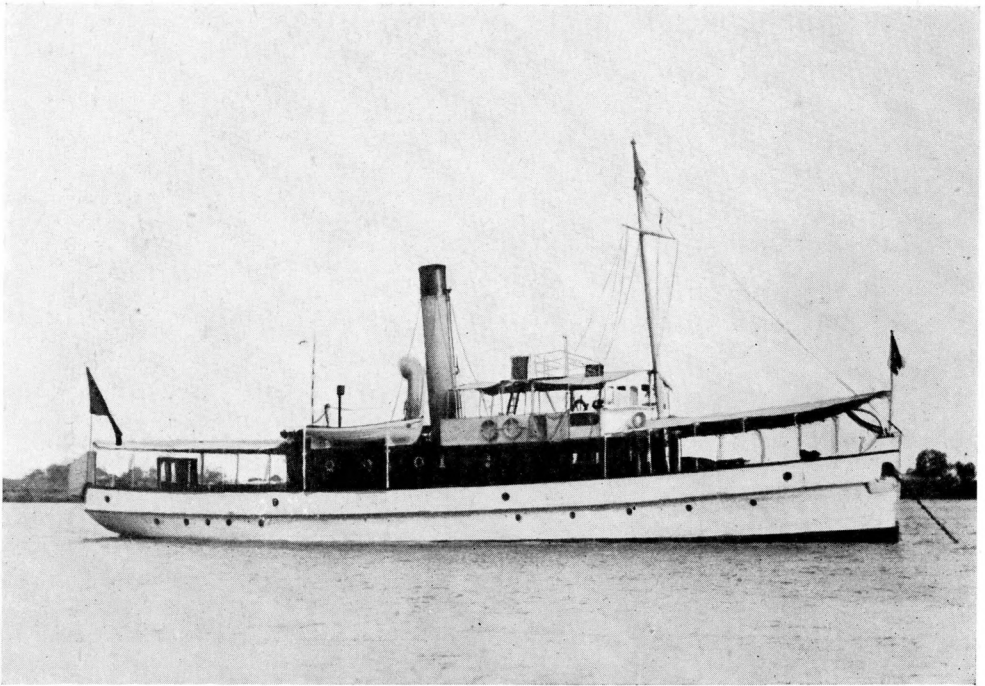


KAN LU



CHING YUN



KING HSIN

THE SURVEYING VESSELS OF THE CHINESE NAVY.

(A)	(B)	(C)	(D)	(E)	(F)	(G)	(H)	(I)	(J)
NAME.	Date and place of construction.	Dimensions in feet Length Beam. Draft.	Maximum H. P.	Fuel capacity.	Consumption of fuel and speeds	Special Personnel.	Crew.	Boats carried.	Special appliances.
KAN LU ...	1903 Ramage and Ferguson.	300 ft. 33.4 ft. 19.15	650	450 Coal.	25 tons. at 11 knots. 30 tons. at 12 knots. 50 tons. at 16 knots. p. 24 hours.	4 Naval Officers trained for surveying duties. 2 Petty Officers trained for surveying duties. No civilians.	91	2 Motor life-boats by Saunders. 1 Motor launch (twinscrew) 30 ft. 1 16 ft. cutter. 1 steam launch 28'. 1 Life boat.	Nil.
KING HSIN .	1912 Taiku Dock.	108 ft. 18 ft. 6 ft. 5 ins.	270	27 Coal.	12 knots.	1 Naval Officer trained for surveying duties. 1 Petty Officer trained for surveying duties. No civilians.	38	1 Motor boat 25 ft. 1 Gig 16 ft.	Nil.
CHING YUN	1915 Kiangnan Engineering & Dock Co. Shanghai.	111 ft. 17 ft. 8 ft.	250	33 Coal.	9 knots.	1 Naval Officer trained for surveying duties.	38	1 Motor boat 25 ft. 1 Gig, 18 feet.	Nil.