

THE SURVEYING VESSELS OF THE UNITED STATES OF AMERICA

N A M E.	(A) <i>Displacement in metric tons.</i>	(B) <i>Date and place of construction.</i>	(C) <i>Dimensions in feet Length. Beam. Draft.</i>	(D) <i>Maximum H. P.</i>	(E) <i>Fuel capacity.</i>	(F) <i>Full and economical speeds. Steaming radius.</i>	(G) <i>Special Personnel.</i>	(H) <i>Crew.</i>	(I) <i>Boats carried.</i>	(J) <i>Special appliances.</i>
1° COAST AND GEODETIC SURVEY.										
SURVEYOR (*).....	1143	1917 Manitowoc Wis. U.S.A.	186 ft. 34 » 12 »	1060 at 126 r. p. m.	262 Oil.	12 knots, 9 knots 13 days, 3,800 miles 24 days, 5,050 miles	9 commissioned Officers. 20 Petty-Officers. (**)	(**)	1 additional ten- der. 2-32 ft. Hydrogra- phic motor-boats. 1-30 ft. motor boat with kitchen rudders for changing and re- versing speed. 1-30 ft. motor- driven open launch. 2-24 ft. and 1-20 ft. whale boats 4 flat bottom skiffs.	Deep sea and in- shore electric soun- ding machine with duralumin reels and specially designed pressure tube. Hand lead with impregna- ted lead line with a phosphor bronze wi- re center.
GUIDE(*) DISCOVERER PIONEER.....	1100	1919 New-York N. Y., U. S. A.	187.9 ft. 35.4 » 13. »	993 at 130 r. p. m.	278 Oil.	13 knots, 9 knots 19 days, 6,000 miles 34 days, 7,450 miles	10 commissioned Officers. 21 Petty-Officers. (**)	(**)	1 additional ten- der. 1-30 ft. Hydrogra- phic motor boat with kitchen for changing and reversing speed. 1-50 ft. motor dri- ven open launch. 2-24 ft. whale boats. 2-16 ft. flat bot- tom skiffs.	1 Sonic Depth fin- der. 1 Radio acoustic sound ranger for de- termination of the vessel's position with shore stations. Deep sea and in- shore electric soun- ding machine with duralumin reels and specially designed pressure tube. Hand lead with impregnated lead li- ne with a phosphor bronze wire center.

(*) The "Surveyor" was constructed especially for surveying duty; the "Guide" is one of three of the same type which were originally constructed as mine sweepers and later altered for surveying duty.

Each vessel is assigned an additional tender which cannot be carried on board. With the "Surveyor" there is one 55-foot coal burning steamer with accommodation for three Officers and 8 men, and one 30 foot open steamer. Somewhat similar equipment is attached to two of the three vessels of the "Guide" type.

(**) In the United States, the coastal surveys are under the jurisdiction of the Coast and Geodetic Survey of the Department of Commerce. The vessels of this Service are operated by Officers who are graduate Civil engineers and who have been commissioned by the President with rank relative to that held by Officers in the Navy. These surveying Officers are also navigators. No Naval Officers or enlisted men are carried on these vessels. Seamen are shipped as in the Merchant Marine and are trained for survey duty as rapidly as possible. Practically all of the Petty-Officers have had several years' experience in some particular type of surveying work, although none of them are trained to handle independent operations.

THE SURVEYING VESSELS OF THE UNITED STATES OF AMERICA

NAME.	(A) Displacement in metric tons.	(B) Date and place of construction.	(C) Dimensions in feet Length. Beam. Draft.	(D) Maximum H. P.	(E) Fuel capacity.	(F) Full and economical speeds. Steaming radius.	(G) Special Personnel	(H) Crew.	(I) Boats carried.	(J) Special appliances.
II° HYDROGRAPHIC OFFICE.										
HANNIBAL.....	4000	J. Blumer & Co., England. Purchased 1898	274 ft. 1 39 » 3 17 » 7	Main engine 700 I. H. P.	475 Coal.	7.5 knots. 4.500 miles.	12 line Officers. 3 civilian hydro- graphers.	146	2 - 35 ft. motor boats. 2- 36 ft. motor launches, specially constructed, twin screw, for surveying. 1- 36 ft. sailing launch. 4- 24 ft. motor launches. 2- 24 ft. whale boats. 2- 14 ft. dinghies.	(*)
NIAGARA.....	2600	James Shewan & Sons, Brooklyn, N. Y. 1898	245 ft. 36 ft.	2000	420 Coal.	13 knots. 10 knots. 13 knots, 10 days. 10 knots, 17 days.	8 line Officers. 1 Medical Officer. 1 Supply Officer One line Officer has completed a course at the Hy- drographic Office Washington D. C. No Petty Officers Two civilians for surveying duties.	150	1- 35 ft. motor boat. 1- 33 ft. motor launch. 2- 24 ft. motor launches. 2- 20 ft. life boats. 1- 16 ft. dinghy with sounding plat- forms built by ship force.	1 Sonic depth fin- der, type S. E. 1897 with compensator, etc...
NOKOMIS.....	1265	Pusey & Jones Wilmington, Del, U.S.A.	243 feet. 31 ft. 10 ins 13 ft. 7 1/2 »	2000	350 Coal.	10 knots. 300 miles.	9 Line Officers. 2 Staff Officers. No officers of a special Hydrogra- phic corps. No enlisted men of special Hydro- phic corps. 1 civilian for sur- veying duties, who also acts in an ad- visory capacity.	131	Tender <i>Aramis</i> a yacht of 375 tons used as quarters for soun- ding boat crews and for stores. 2- 36 ft. twin- screw motor boats specially constructed as sounding boats. (Not carried on the ship). 3- 24 ft. single- screw, Navy. Standard motor launches, used as sounding boats and for general duties. 2- 20 ft. whale boats. 1- 16 ft. dinghy. 1- 12 ft. wherry.	Two electric soun- ding machines, range finders. Usual equipment of sextant, transits, etc... Tide instruments for making magnetic observations.

(*) During the progress of the Batabano Survey an additional complement of 99 naval ratings has been allowed for the purpose of manning the auxiliary surveying craft described below.

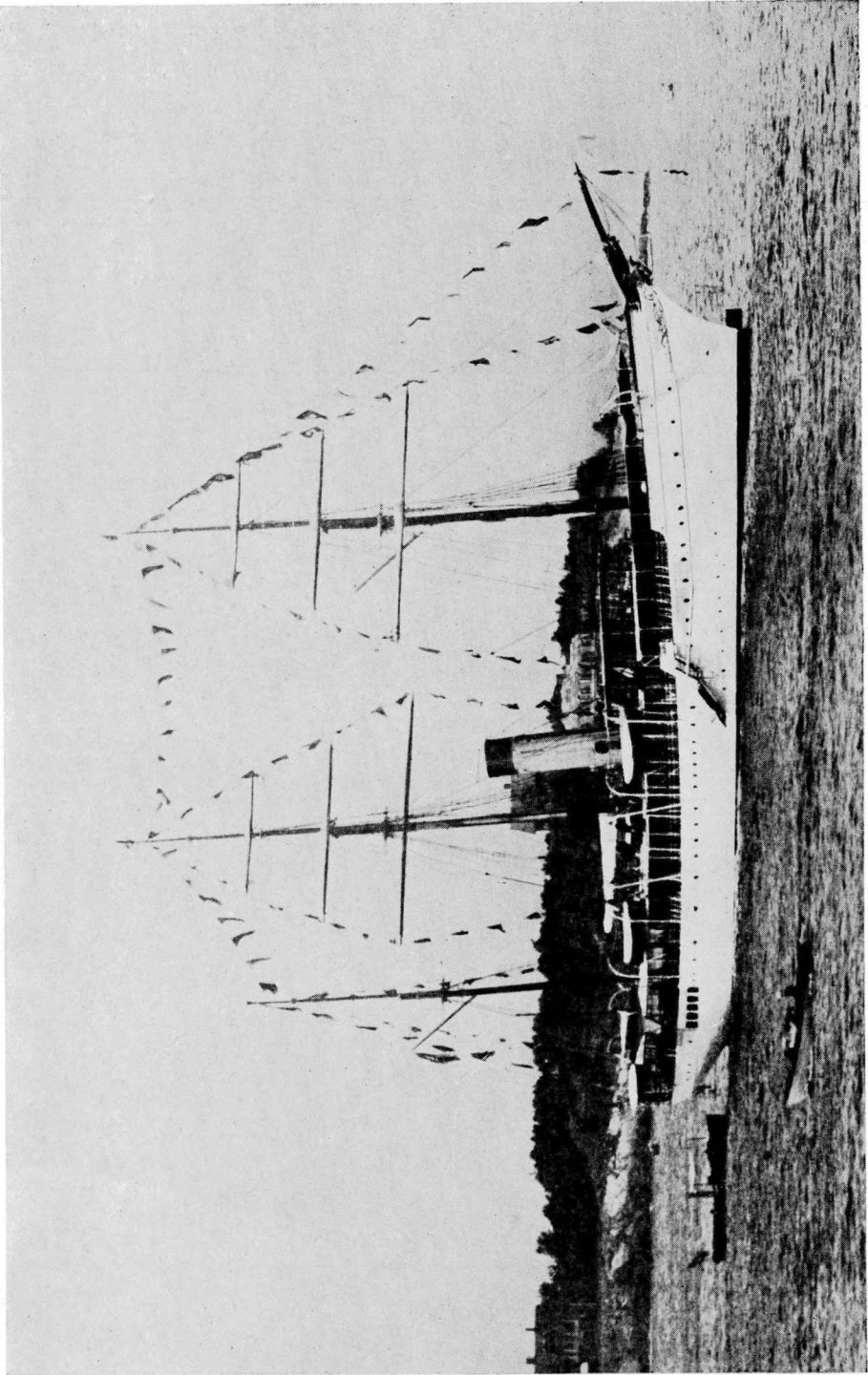
1 - 200 ton barge equipped and fitted as a house boat to provide living quarters for 77 officers and men comprising the field party conducting the boat work.

1 - 500 ton steel barge fitted with fresh water tanks of 4200 gallons capacity, also provides a storage space for 600 - 50 gallons gasoline drums.

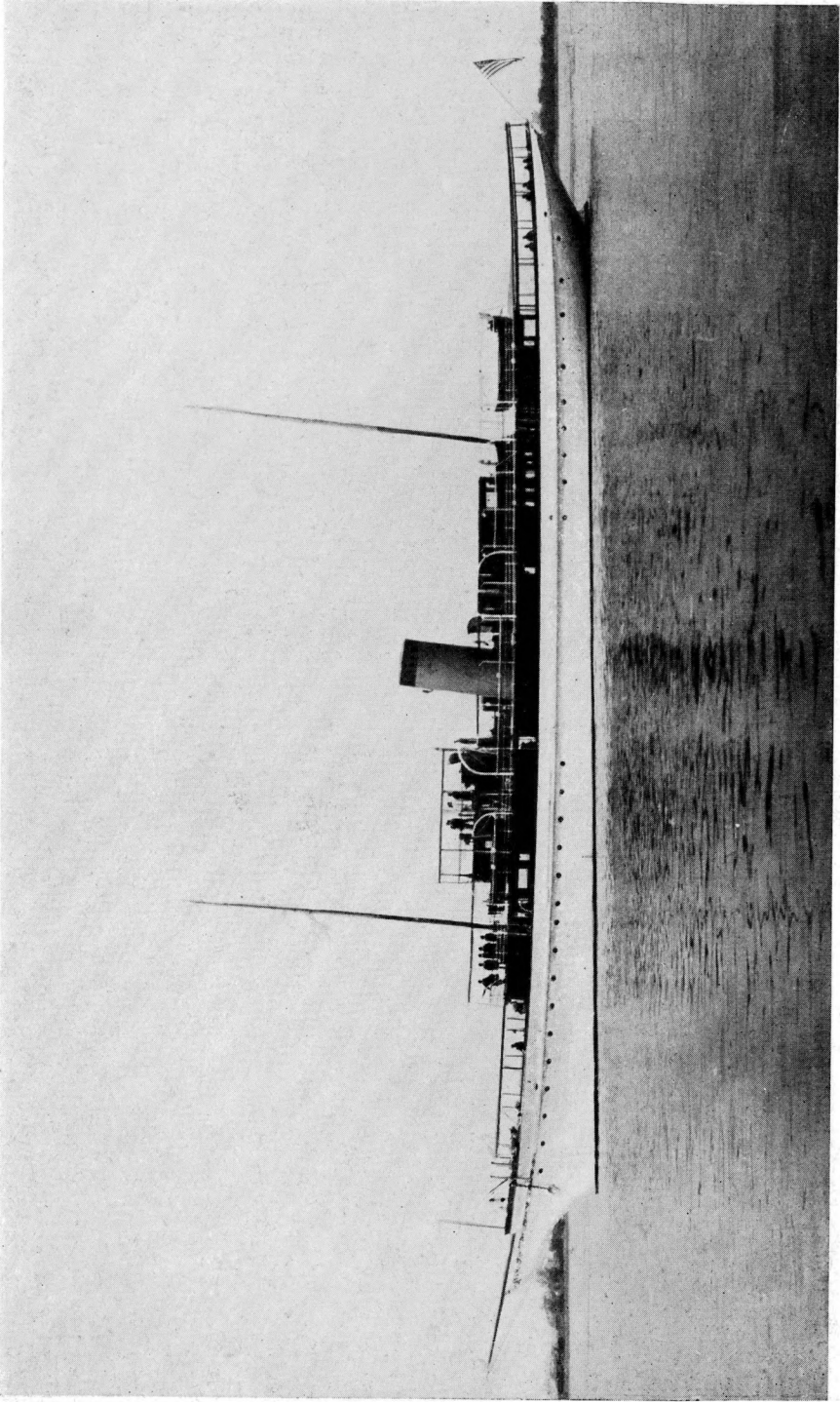
1 - 500 ton steel barge with tank capacity for 32,000 gallons fresh water. Barge is specially equipped to transport 5 - 40 ft. steam launches between home base and survey areas. It also provides stowage space for a large amount of material.

5 - 40 ft. steam launches specially equipped with sounding platforms for leadsmen, bridge for angle observers and a plotting table for the boat sheet.

2 - 110 foot submarine chasers, gasoline motors. No change has been made in these vessels other than removal of the center engine, shafting and propeller, leaving them as twin screw vessels. Used for reconnaissance and despatch duty.



NIAGARA



NOKOMIS

U. S. H. O.

Barges

Chalands

du S. H. des E. U.

