



THE NETHERLANDS HYDROGRAPHIC SERVICE

BY

CAPTAIN J. H. LUYMES, *Hydrographer*

The following information as to the Netherlands Hydrographic Service, to supplement that given in the report of the visit paid to its Offices by the President of the Directing Committee (see *Hydrographic Review*, Volume II, N^o 1, pages 29 to 31), has been compiled to accompany the photographs of the Office and of two of H. N. M. Surveying Vessels reproduced in the present issue.

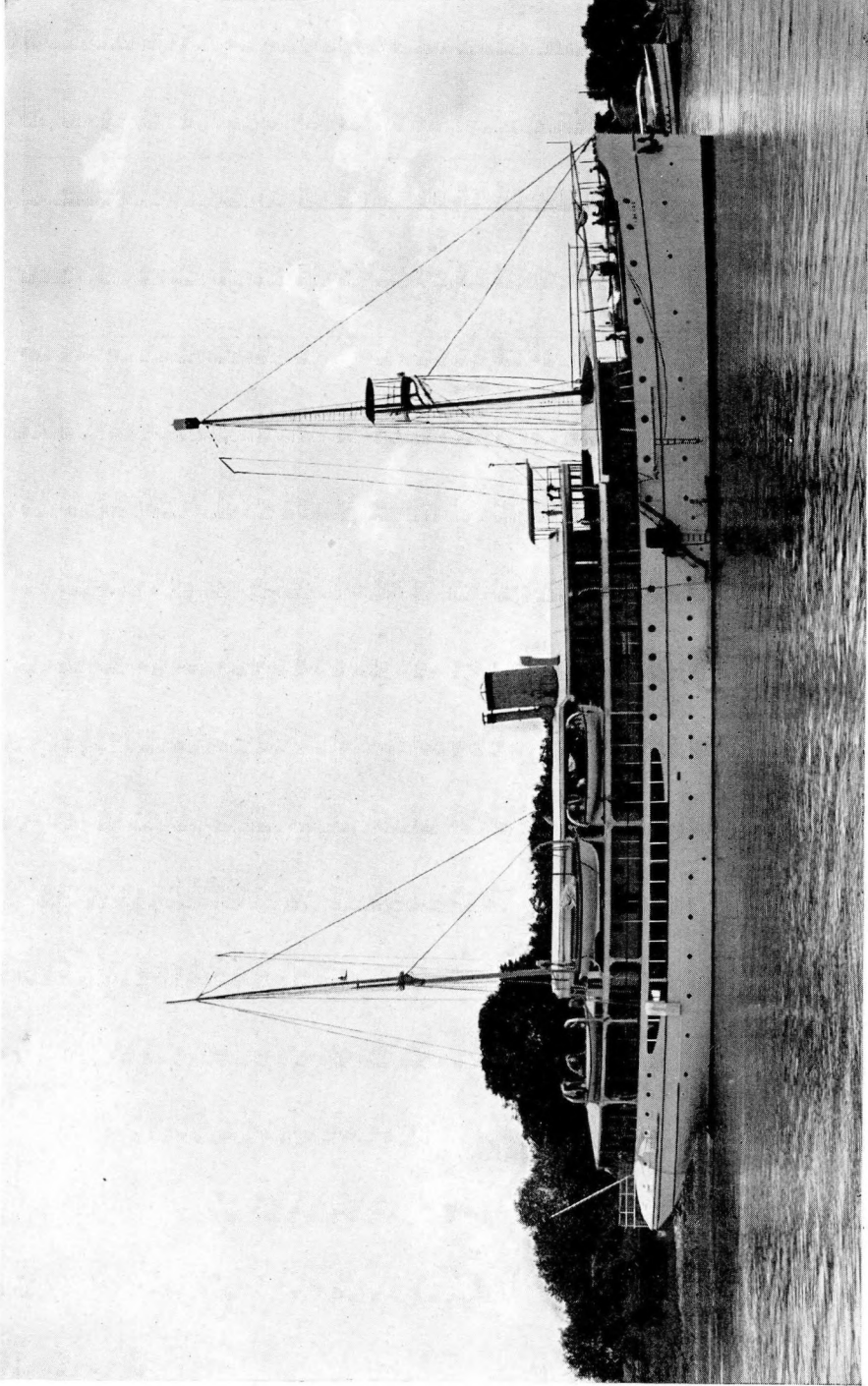
The Netherlands have a tolerably large Hydrographic Service, which is explained by the fact that its work includes not only the survey and control of the coast and estuaries of the Netherlands, but also the survey and charting of the seas of the Netherlands East Indian Archipelago and of the West Indian Colonies.

The East Indian Archipelago extends over about 46 degrees of longitude and 17 degrees of latitude. It contains nearly 2000 islands, of which the estimated length of coastline is 25000 sea-miles. Four surveying vessels of from 900 to 1200 tons displacement work continuously during the whole year in these seas. About 350 charts of this archipelago are already published and the complete survey, started in 1858, will be finished in a few years.

Of the Netherlands West Indies, 7 charts are published, and of the Netherlands 21 charts.

The Netherlands charts are checked during the summer months by two small surveying vessels of about 350 tons displacement.

No charts of foreign seas and countries are published by this Office. For foreign navigation, the Royal Navy as well as merchant vessels use mostly British Admiralty Charts, but the original charts, published by the countries to be visited are coming more and more into use.



Le Navire Hydrographe Néerlandais
"TYDEMAN"

The Netherlands Hydrographic Vessel
"TYDEMAN"

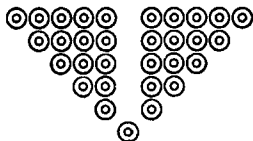


Le Navire Hydrographe Néerlandais
"EILERTS DE HAAN "

The Netherlands Hydrographic Vessel
"EILERTS DE HAAN "

The charts for the Netherlands and Netherlands East Indies are almost all engraved on copper, which work is carried out by French and German private firms of engravers. The large and small corrections only are executed by the engravers of the Hydrographic Office. Only preliminary charts are transferred onto stone or zinc by photographing the drawing. The copper engravings also are transferred onto stone if the number of copies to be printed exceeds 150. All printing is done by private firms. For the correction of the copper plates, the obsolete engraving is first filled up by galvanoplastic precipitation of copper, which is done in the Office, as is also the steeling of the plates before printing.

The Netherlands "Notices to Mariners" deal with the whole world. This work is carried out by a retired Naval Officer, who compiles them from original "Notices to Mariners" and from other sources. Notices to Mariners are published *daily*; they also are printed by a private firm, as well as all the other books, directories and scientific treatises which are published by the Hydrographic Service.



THE SURVEYING VESSELS

NAMES	(a) Displace- ment in metric tons	(b) Date of construction	(c) Dimensions Length Beam Draft	(d) Maximum H. P. Engines	(e) Fuel Capacity
"TYDEMAN"	1320	Soerabaja Naval Dockyard 1916 steel	m. 68.9 10.0 3.6	2 four cylinder four cycle Diesel motors 350 shaft H. P. each built by "Werkspoor" Amsterdam. 2 screws with mo- vable blades tur- ning at 170 revol- utions. Auxiliary engines for punts, dyna- mos, 2 Bronsmo- tors. Electrically dri- ven capstan & steering engine.	"Solar Oil" 166 tons Fresh water 100 tons.
"EILERTS DE HAAN"	350	Fyenoord Rotterdam 1919	44.9 6.7 2.2	2 three cylinder steam engines 300 I. H. P. each 2 oil burning Yar- row boilers. Hele Shaw steer- ing engine. ⚙ Steam driven capstan.	Oil. 30 tons.

OF THE DUTCH ROYAL NAVY

(f) Speed in knots (1) maxim. (2) econo- mical	(g) Special Personnel	(h) Crew	(i) Boats carried	(j) Special Appliances
(1) 10 (2) 7.8 Steaming radius at economical speed 14.000 miles	Naval Officers: 6 to 7, the Commander inclu- ded. Naval Petty Officers: 11 No civilians.	105	6 boats of which 3 are motor driven	1 Leblanc Deep-sea sounding machine. 1 Motor driven Kelvin machine. 1 James' submarine sen- try. Small Lucas Machines for the boats.
(1) 12 (2) 9	2 Officers. 1 Master (civilian). 1 Naval Petty Officer	17 Officers in- cluded	3 boats one is steam driven	No special surveying fittings and appliances.