

Le Navire hydrographe "ORMONDE".

H. M. Surveying Vessel "ORMONDE".

## THE SURVEYING VESSELS

NAMES	(a) DISPLACEMENT METRIC TONS	(b) DATE OF CONSTRUCTION	(c) DIMENSIONS		(d) MAXIMUM H. P.	(e) FUEL CAPACITY	(f) SPEED IN KNOTS	
			LENGTH	BEAM DRAFT			(1) max.	(2) economic
HERALD	1650	1919 Great Britain	ft.	m.	2500	260 Coal.	(1) 15 (2) 10	
IROQUOIS			267	81.40				
ORMONDE			35	9.65				
			15	4.55				
BEAUFORT	800	1919 Scotland	231	70.40	2200	186 Coal.	(1) 16 (2) 10	
FITZROY			28	8.55				
FLINDERS			9	2.75				
KELLET								

NOTES. — A. - The vessels of the "Beaufort" class, while under construction, were re-designed for surveying purposes.

B. - The motor-boats are the only boats specially constructed for Surveying.

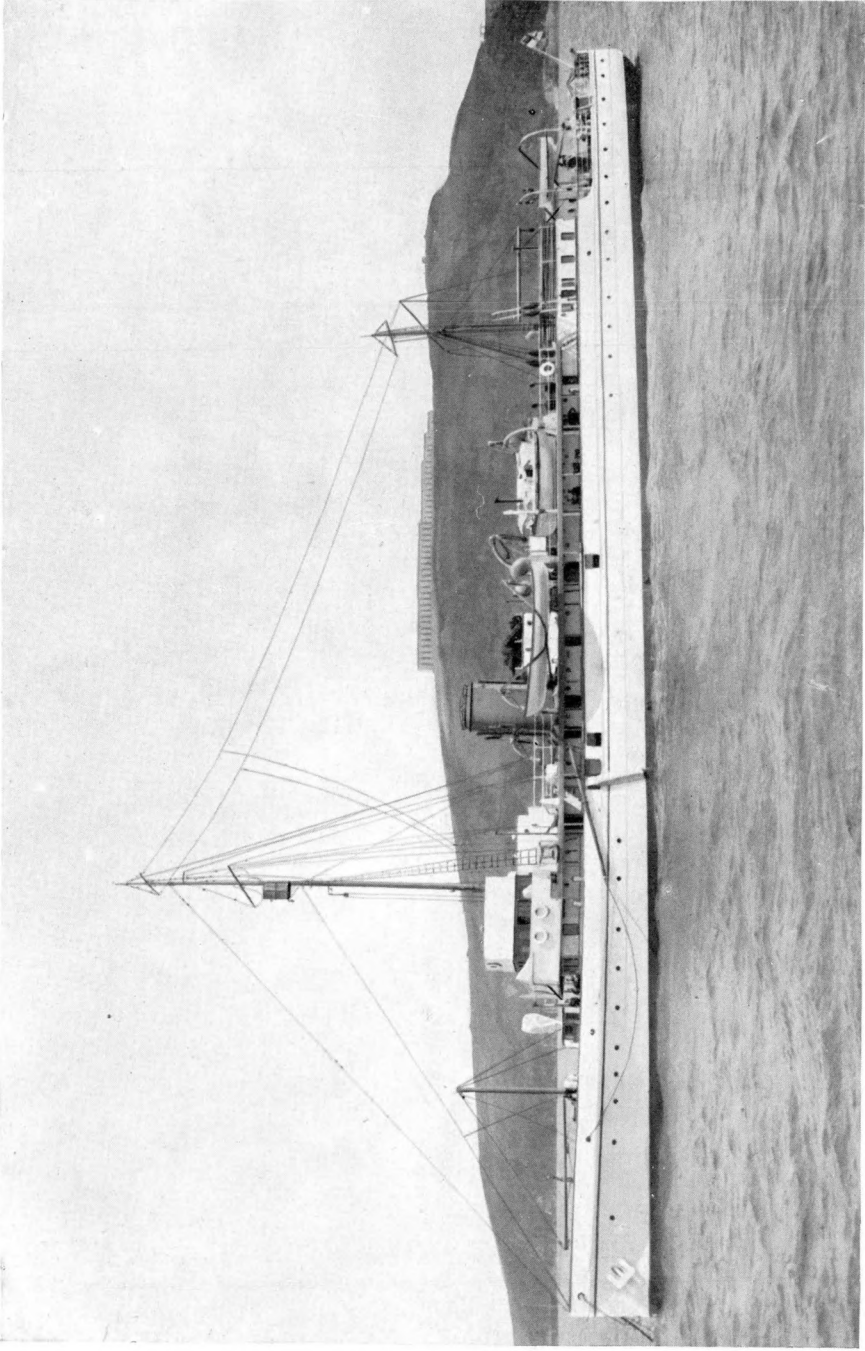
The reproduction as a frontispiece of a photograph of H. B. M. S. "Egeria", taken when entering Esquimalt Harbour, B. C., in 1909, is given as a good example of the previous type in comparison with the surveying vessel of present day requirements; she was built in 1873 and was of 940 tons displacement; she carried a total complement of 137, and was first commissioned for surveying duties in the year

## OF THE BRITISH ROYAL NAVY

(g)	(h)	(i)	(j)
SPECIAL PERSONNEL	CREW	BOATS CARRIED	SPECIAL APPLIANCES
7 SURVEYING..... NAVAL OFFICERS.	121	2-28 ft. motor boats	Sonic sounding apparatus, Somerville and Douglas-Schäfer sounding gears.
		1-25 " " "	
3 SURVEYING NAVAL. PETTY OFFICERS.		1-30 " cutter	
	3-27 " whalers		
		3-16 " dinghies	
5 SURVEYING..... NAVAL OFFICERS.	89	1-28 ft. motor boat	Sonic sounding apparatus, Somerville and Douglas-Schäfer sounding gears.
		1-25 " " "	
2 SURVEYING NAVAL.. PETTY OFFICERS..		2-27 " whalers	
	2-16 " dinghies		

C. - The Australian Royal Naval Surveying Vessel "*Moresby*" which has been commissioned recently is one of the "*Herald*" class.

1886 ; she was employed in the East Indies and Pacific, in Chinese and Australian waters, on the West coast of South America and in British Columbia, and in 1899, obtained the soundings between British Columbia and Fanning Island preliminary to the laying of the cable between these places ; she was paid off finally in December 1910.



Le Navire hydrographe "BEAUFORT".

H. M. Surveying Vessel "BEAUFORT".