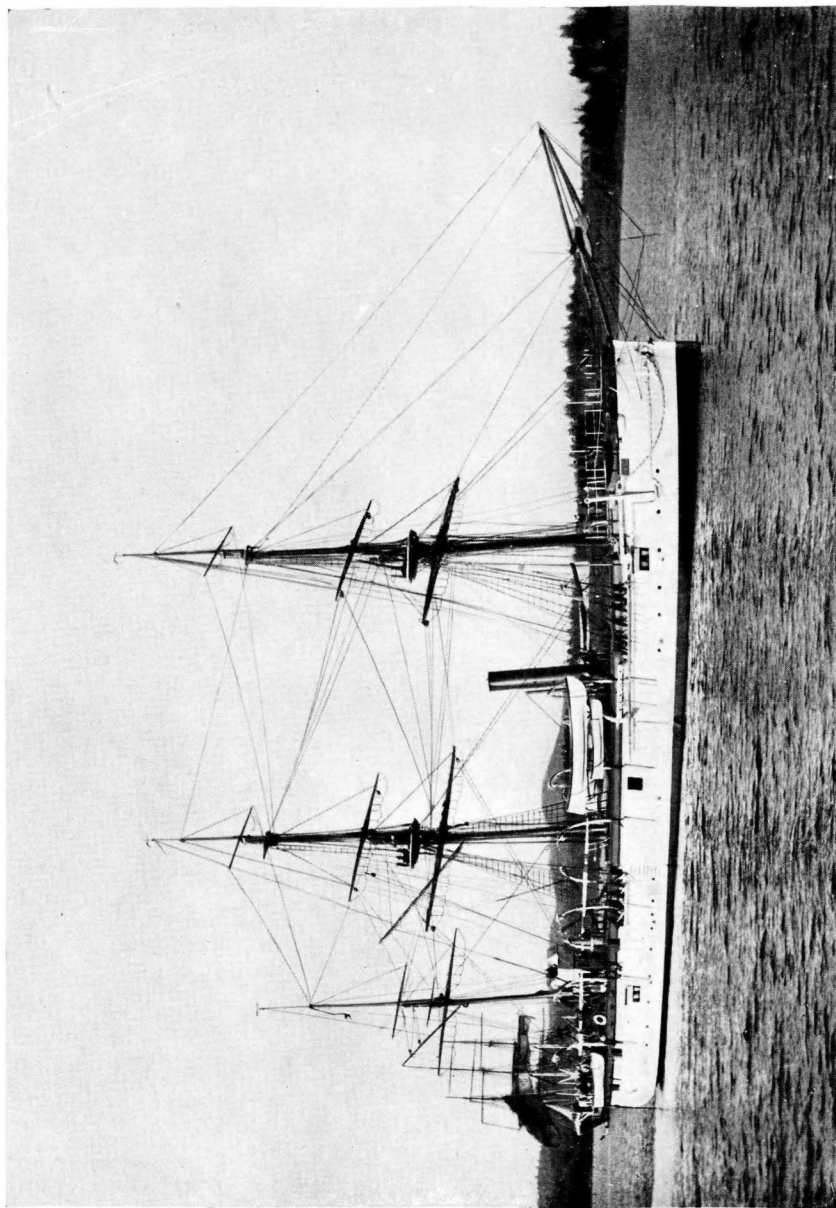


# **HYDROGRAPHIC REVIEW**



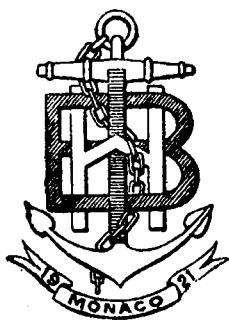
L'EGERIA  
Navire hydrographe de S. M. Britannique  
1886-1913

HIS BRITANNIC MAJESTY'S  
Surveying Vessel "EGERIA"  
1886-1913

THE  
**HYDROGRAPHIC  
REVIEW**

VOL. III

N° 1



(N° 5 OF THE SERIES)

PUBLISHED BY  
THE

**INTERNATIONAL HYDROGRAPHIC BUREAU**

3, Avenue du Port

**MONACO**

(PRINCIPALITY)



**NOVEMBER 1925**

---

IMPRIMERIE F. ROBAUDY

24, RUE HOCHÉ, CANNES

## LIST OF CONTENTS.

---

	Pages
PREFATORY NOTES.....	9
WORK OF THE BUREAU.....	15
THE SPANISH HYDROGRAPHIC OFFICE.....	25
THE PORTUGUESE HYDROGRAPHIC OFFICE.....	27
THE ROYAL OBSERVATORY, GREENWICH.....	31
THE TESTING AND ADJUSTMENT OF THE STATION POINTER.....	37
THE METRIC SYSTEM.....	45
A RADIO-ACOUSTIC METHOD OF POSITION FINDING IN HYDRO- GRAPHIC SURVEYS.....	53
THE SURVEYING VESSELS OF THE BRITISH NAVY.....	66
VELOCITY OF PROPAGATION OF SOUND THROUGH SEA-WATER.....	69
DATA ON UNIFORMITY OF BUOYAGE AND BUOY-LIGHTING.....	101
OBSERVATIONS OF VISIBILITY OF LIGHTS.....	141
CHART ROOM.....	181
LIBRARY.....	183
NOTES AND QUERIES.....	187
INTERNATIONAL HYDROGRAPHIC BIBLIOGRAPHY.....	189

---

---

# IMPORTANT NOTICE

---

## CONSIGNMENTS TO THE BUREAU

---

The French Government has kindly consented to permit all instruments, documents and other articles necessary for the work of the Bureau to be imported from other countries free of all customs dues provided that the Ministry of Finance receives previous notification of the proposed importation.

The Secretary-General should therefore be notified of the intended despatch of any such articles and information on the following subjects should be given at the same time : —

- (a) Name of sender ;
- (b) Number of packages ;
- (c) Types of packages (box, bale, etc.) ;
- (d) Marks on the packages ;
- (e) Weight of each package ;
- (f) Schedule of contents ;
- (g) Date of despatch ;
- (h) Probable date and port of entry into France
- (i) Means of transport (Parcels post, steamer, rail. etc.)

Unless this information is given in advance the full customs dues are payable and these fall on the Bureau.

All packages should be addressed to : —

THE SECRETARY-GENERAL  
INTERNATIONAL HYDROGRAPHIC BUREAU,  
MONACO.

# INTERNATIONAL HYDROGRAPHIC BUREAU

---

## LIST OF STATES WHICH ARE MEMBERS OF THE BUREAU

---

ARGENTINE.  
BRAZIL.  
BRITISH EMPIRE.  
UNITED KINGDOM.  
AUSTRALIA.  
CHILE.  
CHINA.  
DENMARK.  
EGYPT.  
FRANCE.  
GREECE.  
ITALY.

JAPAN.  
MONACO.  
NETHERLANDS.  
NORWAY.  
PERU.  
POLAND.  
PORTUGAL.  
SIAM.  
SPAIN.  
SWEDEN.  
UNITED STATES OF AMERICA.

---

## DIRECTING COMMITTEE

---

*President :* Vice-Admiral Sir JOHN F. PARRY, K. C. B.  
*Director :* Schout-bij-Nacht J. M. PHAFF.  
*Director :* Rear-Admiral A. P. NIBLACK, D. S. M.

---

## SECRETARY-GENERAL

---

Commander G. B. SPICER-SIMSON, D. S. O.

The Directing Committee is not responsible for statements made or opinions expressed in articles or papers published in this Review which are written by Authors who are not members of the International Hydrographic Bureau.