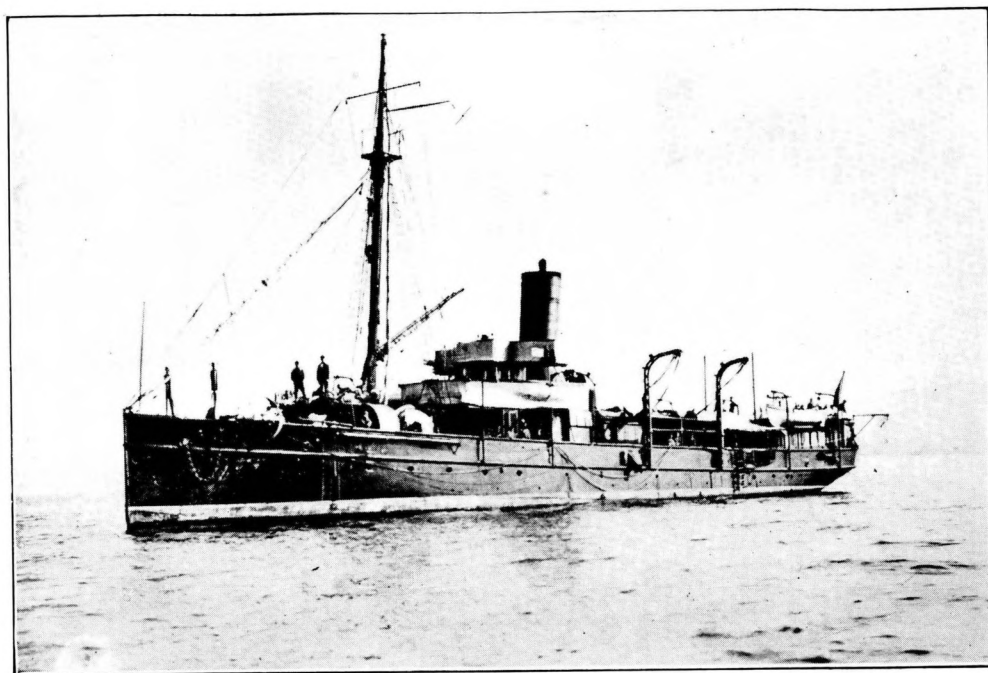
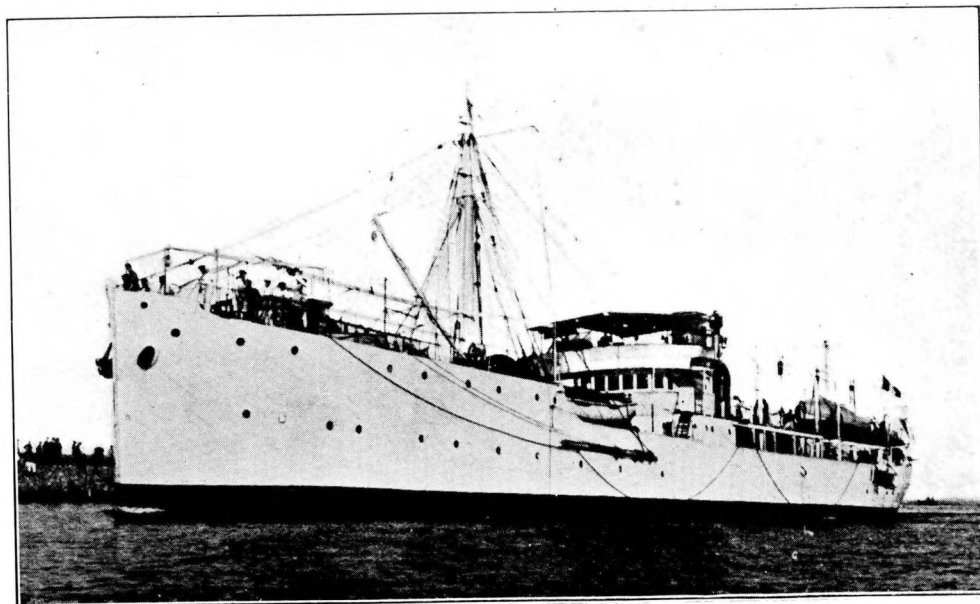


THE SURVEYING VESSELS  
OF THE FRENCH NAVY

LES NAVIRES HYDROGRAPHES  
DE LA MARINE FRANÇAISE



UTILE



LAPÉROUSE

THE SURVEYING VESSELS OF THE FRENCH NAVY

NAME	(a) DISPLACEMENT metric tons	(b) DATE of construction	(c) DIMENSIONS in feet Length Beam Draft	(d) MAXIMUM H. P.	(e) FUEL CAPACITY	(f) SPEED MAXIMUM in knots	(g) SPECIAL PERSONNEL	(h) CREW	(i) BOATS CARRIED	(j) SPECIAL APPLIANCES
<i>Utile</i> .....	475	1894	162 1/2 ft. 25 ft. 11 ft. 2 ins.	700	61 Coal	13	3 Ingénieurs hydrographes 1 or 2 Ingénieurs élèves. 3 Petty Officers. 1 civil Draughtsman.	58	2 steam boats 25 ft. 1 jolly- boat and 2 whalers 23 ft. 1 motor dinghy.	1 ultra-sonic sounding apparatus.
<i>Sonde</i> .....	51	1911	65 ft. 15 1/4 ft. 5 ft. 9 ins.	165	6 Coal	10	2 Petty Officers.	10		
<i>Boussole</i> .....	460	1918	143 f , 24 ft. 12 ft. 3 ins.		120 Coal	10	2 Officers.	30	1 whaler. 21 1/2 ft.	1 ultra-sonic sounding apparatus.
<i>Octant</i> .....	d°	d°	d°	d°	d°	d°	d°	d°	d°	
<i>Astrolabe</i> .....	d°	d°	d°	d°	d°	d°	d°	d°	d°	1 ultra-sonic sounding apparatus.
<i>Alidade</i> .....	d°	d°	d°.	d°	d°	d°.	d°	d°	d°	1 explosion sounding apparatus. 1 ultra-sonic sounding apparatus.
<i>Gaston-Rivier</i> .....	d°	d°	d°	d°	d°	d°	1 Ingénieur hydrographe. 2 Petty Officers.	d°	1 steam boat 25 ft. 1 whaler 21 1/2 ft.	1 ultra-sonic sounding apparatus.
<i>Beautemps-Beaupré</i> ..	1.200	1919	208 ft. 28 ft. 14 ft.	1.100	240 Coal	11	1 Ingénieur hydrographe. 7 Officers. 3 Petty Officers. 1 civil Draughtsman.	100	4 steam boats 25 ft. 1 jolly-boat 26 ft. 1 whaler 23 ft. 1 dinghy 16 1/2 ft.	1 ultra-sonic sounding apparatus.
<i>Lapérouse</i> .....	d°	d°	d°	d°	d°	d°	d°	d°	d°	
<i>Zélée</i> .....	337		160 ft. 28 ft. 12 ft. 6 ins.	850		14	2 Officers. 4 Petty Officers.	40	2 whalers 23 ft, 1 dinghy 16 1/2 ft.	
<i>Minou</i> .....	30		65 ft. 12 ft. 7 3/4 ft.	150		7		6		
<i>Ter</i> .....	80		62 ft. 16 1/2 ft. 6 ft. 7 ins.	120		9		8		

- NOTA. — 1. The *Sonde* is the only one which was specially constructed for surveying.  
 2. The *Zélée*, the *Minou* and the *Ter* are practically exclusively employed in wire dragwork.  
 3. The *Minou* and the *Ter* are lent temporarily to the Surveying Service.