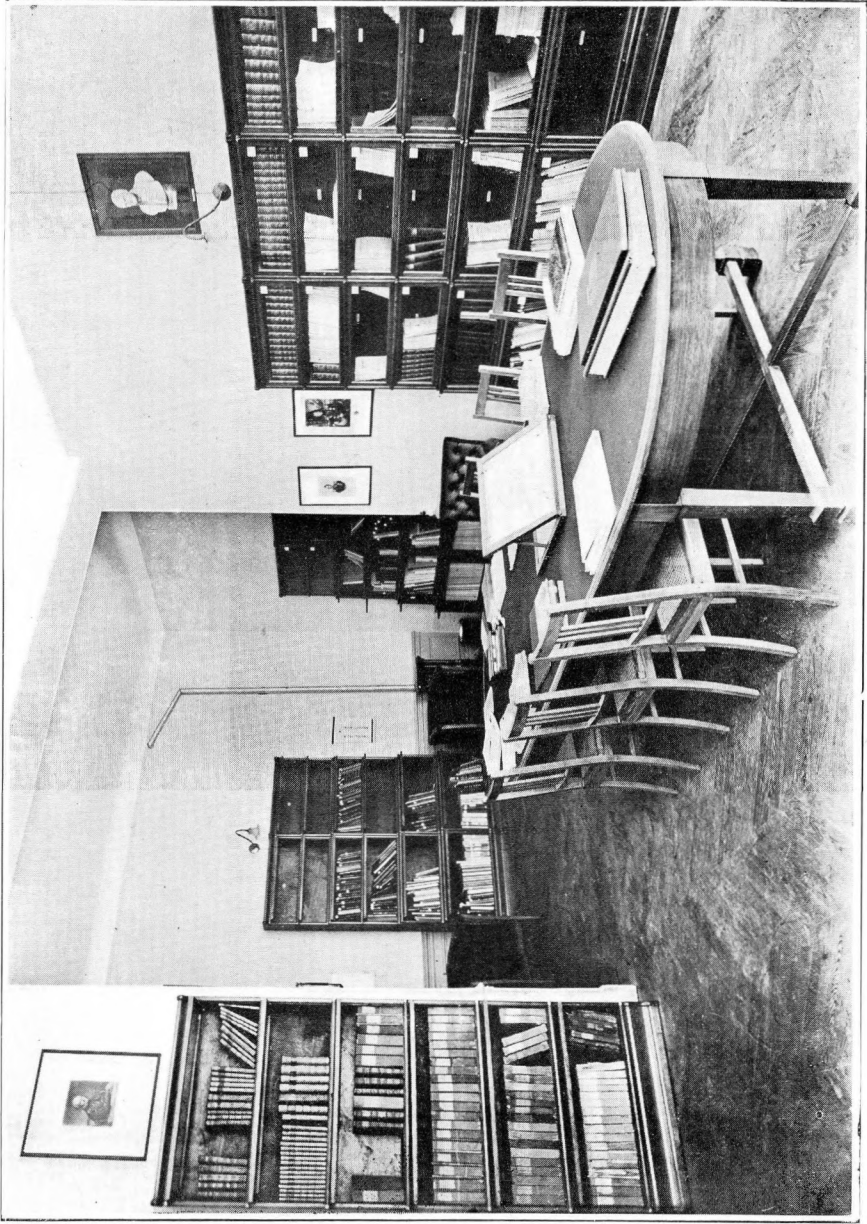


HYDROGRAPHIC REVIEW

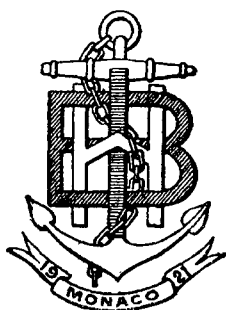


LIBRARY OF THE
INTERNATIONAL HYDROGRAPHIC BUREAU.

BIBLIOTHEQUE DU
BUREAU HYDROGRAPHIQUE INTERNATIONAL

HYDROGRAPHIC REVIEW

VOL. II



N° 2

(N° 4 OF THE SERIES)

**PUBLISHED BY
THE
INTERNATIONAL HYDROGRAPHIC BUREAU
3, AVENUE DU PORT
MONACO
(PRINCIPALITY)**



MAY 1925

**SOCIÉTÉ D'ÉDITIONS GÉOGRAPHIQUES, MARITIMES ET COLONIALES
17, RUE JACOB, PARIS VI'**

LIST OF CONTENTS

	Pages
PREFATORY NOTES	9
THE DEPARTMENT OF HYDROGRAPHY AND NAVIGATION OF CHILE	13
THE ITALIAN HYDROGRAPHIC INSTITUTE	19
TRINITY HOUSE OF ENGLAND	27
THE DEPARTMENT OF TERRESTRIAL MAGNETISM OF THE CARNEGIE INSTITUTION	33
ENGRAVING COPPER CHART PLATES	39
SOUNDING IN SHALLOW WATER FROM A VESSEL UNDER WAY	57
DESCRIPTION OF A FORM OF VACUUM TIDE GAUGE	61
INTERNATIONAL LOW WATER	63
CO-ORDINATION OF CHART DATUMS	129
ECHO SOUNDING	135
THE SURVEYING VESSELS OF THE FRENCH NAVY	193
NOTES AND QUERIES	193
INTERNATIONAL HYDROGRAPHIC BIBLIOGRAPHY	199

IMPORTANT NOTICE

CONSIGNMENTS TO THE BUREAU

The French Government has kindly consented to permit all instruments, documents and other articles necessary for the work of the Bureau to be imported from other countries free of all customs dues provided that the Ministry of Finance receives previous notification of the proposed importation.

The Secretary-General should therefore be notified of the intended despatch of any such articles and information on the following subjects should be given at the same time : —

- (a) Name of sender ;
- (b) Number of packages ;
- (c) Types of packages (box, bale, etc.) ;
- (d) Marks on the packages ;
- (e) Weight of each package ;
- (f) Schedule of contents ;
- (g) Date of despatch ;
- (h) Probable date and port of entry into France ;
- (i) Means of transport (Parcels post, steamer, rail, etc.).

Unless this information is given in advance the full customs dues are payable and these fall on the Bureau.

All packages should be addressed to : —

THE SECRETARY-GENERAL,
INTERNATIONAL HYDROGRAPHIC BUREAU,
MONACO.

INTERNATIONAL HYDROGRAPHIC BUREAU

LIST OF STATES WHICH ARE MEMBERS OF THE BUREAU

ARGENTINE.
BELGIUM.
BRAZIL.
BRITISH EMPIRE.
UNITED KINGDOM.
AUSTRALIA.
CHILE.
CHINA.
DENMARK.
EGYPT.
FRANCE.
GREECE.

ITALY.
JAPAN.
MONACO.
NETHERLANDS.
NORWAY.
PERU.
POLAND.
PORTUGAL.
SIAM.
SPAIN.
SWEDEN.
UNITED STATES OF AMERICA.

DIRECTING COMMITTEE

President :

Vice-Admiral Sir JOHN F. PARRY, K. C. B.

Director :

Schout-bij-Nacht J. M. PHAFF.

Director :

Rear-Admiral A. P. NIBLACK, D. S. M.

SECRETARY-GENERAL

Commander G. B. SPICER-SIMSON, D. S. O.

The Directing Committee is not responsible for statements made or opinions expressed in articles or papers published in this Review which are written by Authors who are not members of the International Hydrographic Bureau.