

THE SURVEYING VESSELS AND BOATS OF SWEDEN

| NAME | (A) Displacement in tons (Deadweight) | (B) Date and place of construction | (C) Dimensions in meters Length Beam Draft | (D) Machinery Maximum HP | (E) Fuel capacity tons | (F) Economical speed | (G) Personnel | (H) Crew | (I) Boats constructed for surveying | (J) Special appliances |
|--|--|---|---|-------------------------------------|---------------------------------|----------------------------|---|-------------|---|--|
| GUSTAF AF KLINT.. | 650 | 1941 Finnboda Stockholm | 47.0 8.70 3.95 | M/S 640 KA-ME-VA propeller | 50.0 oil | 9.5 | 3 officers for survey- ing work ; 3 warrant officers for the ship ; 1 draughtsman. | 28 | 1 echo sounding mo- tor boat 1) ; 1 motor launch 2). | <i>Echo sounders:</i> Marconi Seagraph Atlas - Werke 42 with echograph ; Deccameters. <i>Radar :</i> Raytheon-RCA. Radio receivers and transmitter ; Radio direction fin- der. |
| SVENSKSUND (living accomodations) .. | 415 | 1891/1942 Kockum Malmö | 40.0 7.90 4.30 | S/S 425 | 39.0 coal | 9.0 | 3 officers for survey- ing work ; 1 civilian hydrogra- pher ; 1 warrant officer for surveying work ; 3 warrant officers for the ship ; 1 draughtsman. | 38 | 3 echo sounding mo- tor boats 1) 3 motor launches 2). | |
| RAN (living accomo- dations) | 285 | 1946 Karlskrona | 31.6 7.10 2.90 | M/S 200 | 30.0 oil | 8.5 | 2 officers for survey- ing work ; 1 civilian hydrogra- pher ; 1 warrant officer for surveying work. 2 warrant officers for the ship ; 1 draughtsman. | 30 | 2 echo sounding mo- tor boats 1) ; 3 motor launches 2). | |
| JOHAN NORDENAN- KAR (living accomo- dations) | 210 | 1924 Finnboda Stockholm | 31.6 6.80 2.50 | M/S 180 | 50.0 oil | 8.0 | 2 officers for survey- ing work ; 1 civilian hydrogra- pher ; 1 warrant officer for surveying work ; 2 warrant officers for the ship ; 1 draughtsman. | 30 | 2 echo sounding mo- tor boats 1) ; 3 motor launches 2). | |

| NAME | (A) Displacement in tons (Deadweight) | (B) Date and place of construction | (C) Dimensions in meters Length Beam Draft | (D) Machinery Maximum HP | (E) Fuel capacity tons | (F) Economical speed | (G) Personnel | (H) Crew | (I) Boats constructed for surveying | (J) Special appliances |
|--|--|---|--|-----------------------------------|---------------------------------|----------------------------|---|-------------|--|---|
| PETTER GEDDA (living accommodations) | 135 | 1924 Finnboda Stockholm | 26.1 5.60 2.10 | M/S 70 | 5.0 oil | 6.5 | 2 warrant officers for surveying work ; 2 warrant officers for the ship ; 1 draughtsman. | 26 | 2 echo sounding motor boats 1) ; 2 motor launches 2). | |
| SVALAN | 140 | 1881/1945 Kockum | 32.5 5.30 2.70 | S/S 140 | 28.0 coal | 9.0 | 2 officers for surveying work ; 1 civilian hydrographer ; 3 warrant officers for the ship ; 1 draughtsman. | 20 | 1 echo sounding motor boat 1) ; 1 motor launch 2). | Echo sounder SRA 85 S. |
| EJDERN | 80 | 1916 Eriksberg Göteborg | 25.0 4.80 2.30 | S/S 110 | 15.0 coal | 8.0 | 1 officer for surveying work ; 1 civilian hydrographer ; 2 warrant officers for the ship. | 16 | 1 echo sounding motor boat 1) ; 1 motor launch 2). | Echo sounder SRA 85 S. |
| KOMPASS (demagnetised for magnetic work) | 50 | 1938 Djupvik Tjörn | 17.7 5.25 2.40 | M/S 60 | 3.5 oil | 7.0 | 2 civilian hydrographers. | 5 | | |
| 1) Echo sounding motor-boat | 6.6 | 1934 to 1948 | 11.30 2.65 0.80 | Penta- Hesselman 30-70 | 0.36 oil | 9.0 | 1 surveyor. | 4 | | Echo sounders : SRA 85 S or Hughes MS XII ; Hand sounding machine ; Kitchen rudder. |
| 2) Motor launch | 5.30 | 1916 to 1948 | 9.66 2.69 0.80 | Bolinder- Munktel 40 | 0.25 oil | 9.0 | 1 surveyor. | 4 | | Hand sounding machine ; Kitchen rudder. |

NOTE :

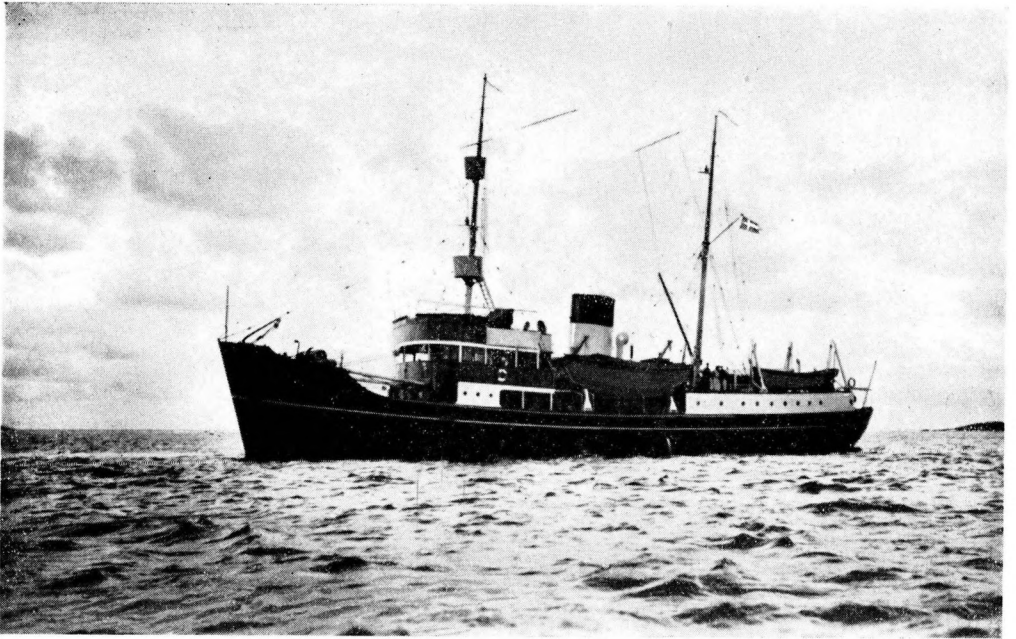
A) All the ships except *Svensksund* are constructed especially for surveying duty.

Svensksund is a gun-boat which in 1946 was rebuilt for surveying duty.

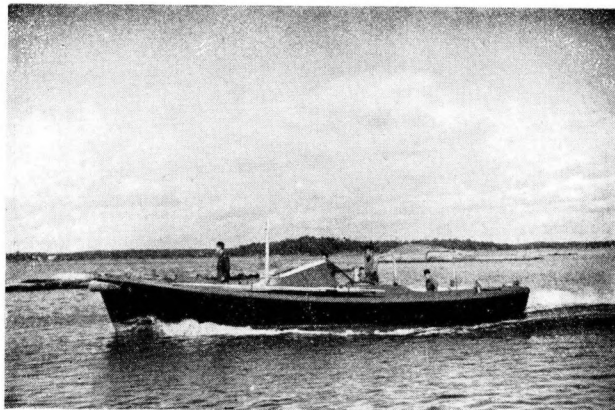
B) The officers, warrant officers and the crew are from the Royal Navy. The

civilian hydrographers and the draughtsmen are from the Hydrographic Office.

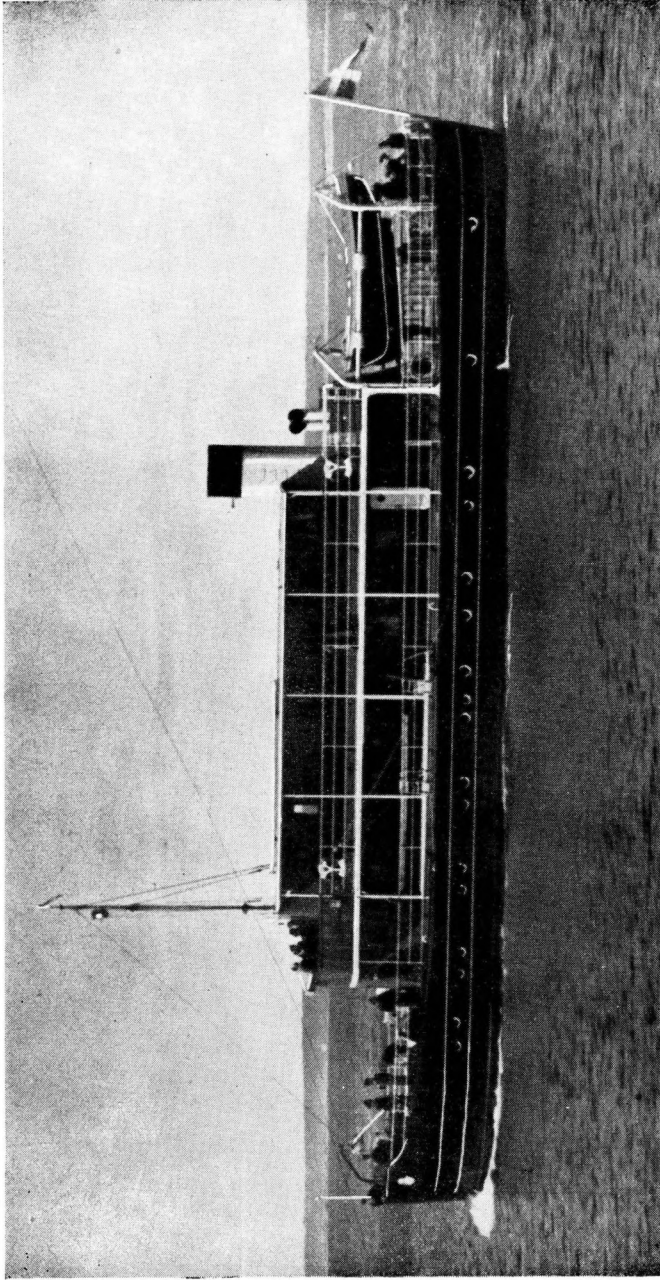
C) As of 1948 there are 13 echosounding motor boats and 17 motor launches in use.



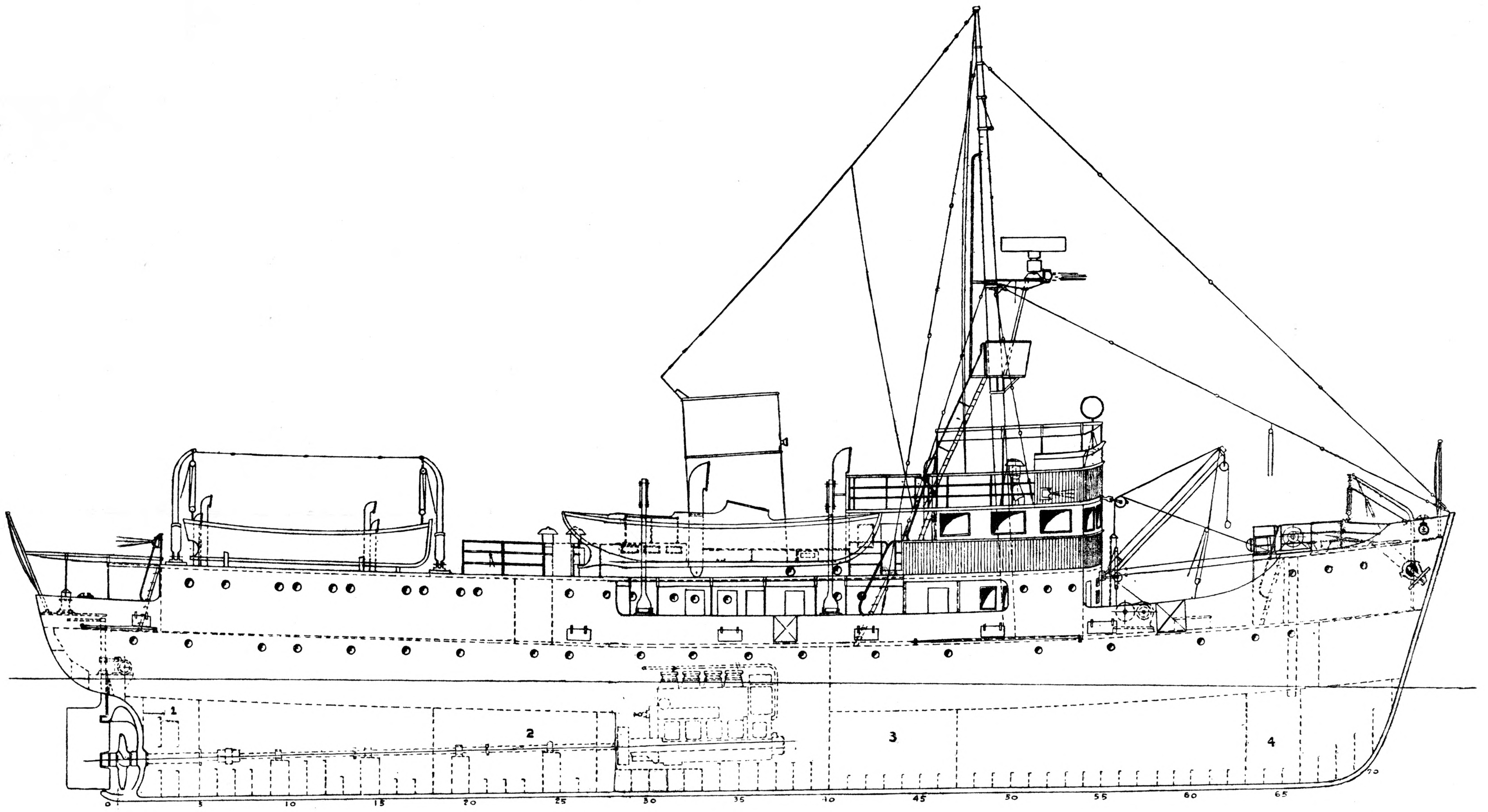
The Swedish Surveying Vessel "Gustaf af Klint".



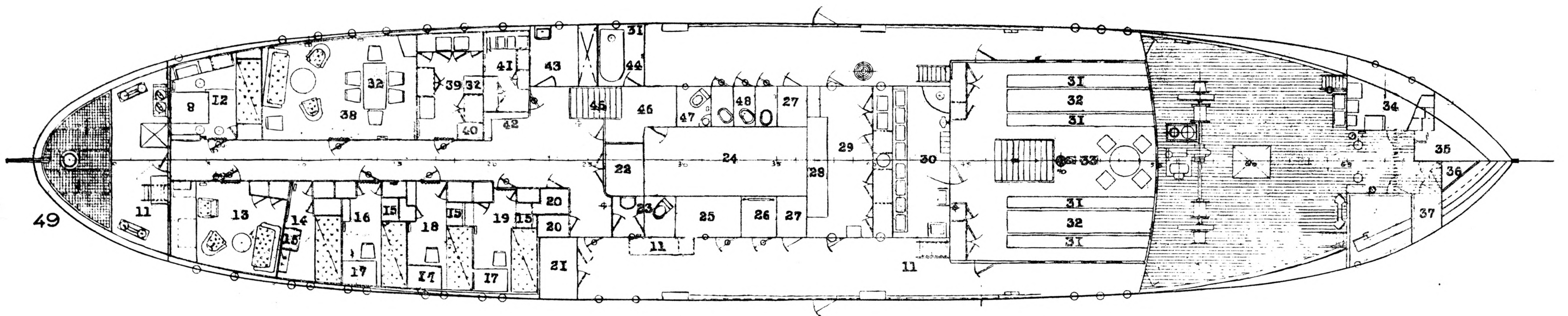
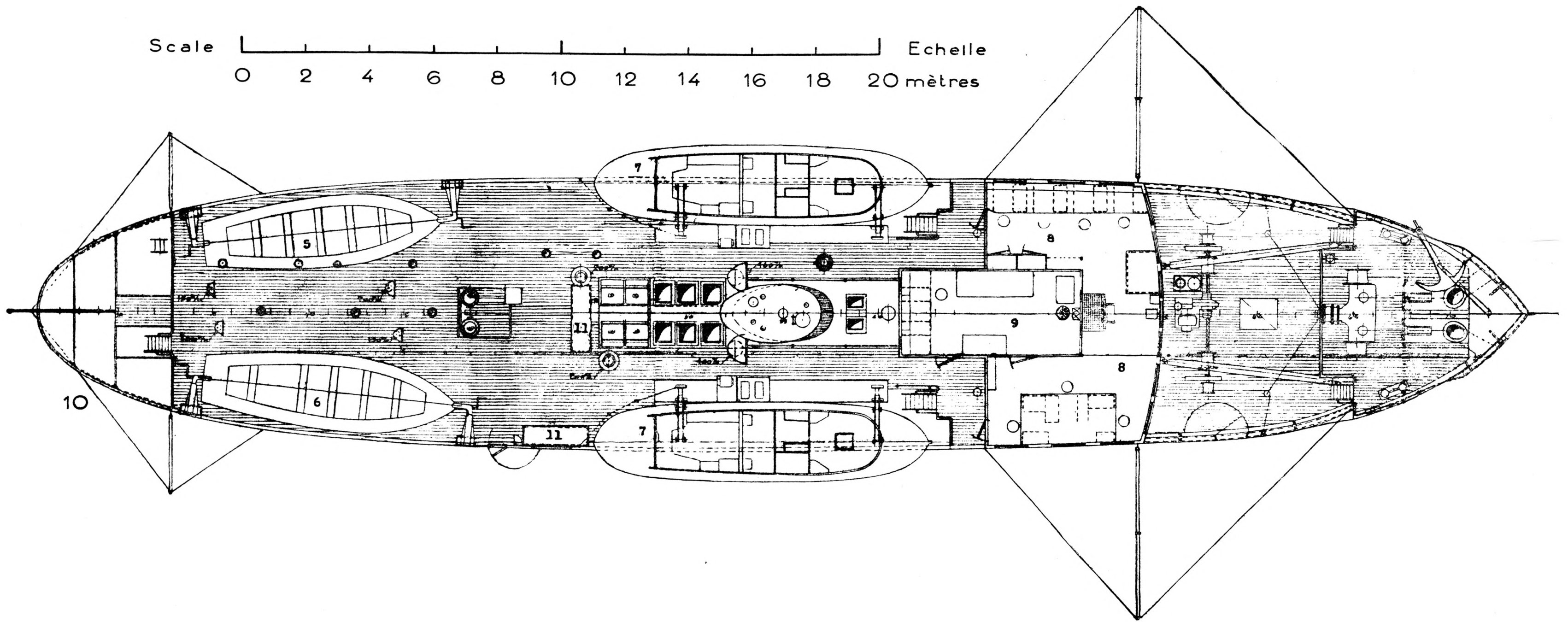
Echo Sounding Motor-Boat.



The Swedish Surveying Vessel "Ran".



Scale 0 2 4 6 8 10 12 14 16 18 20 mètres Echelle

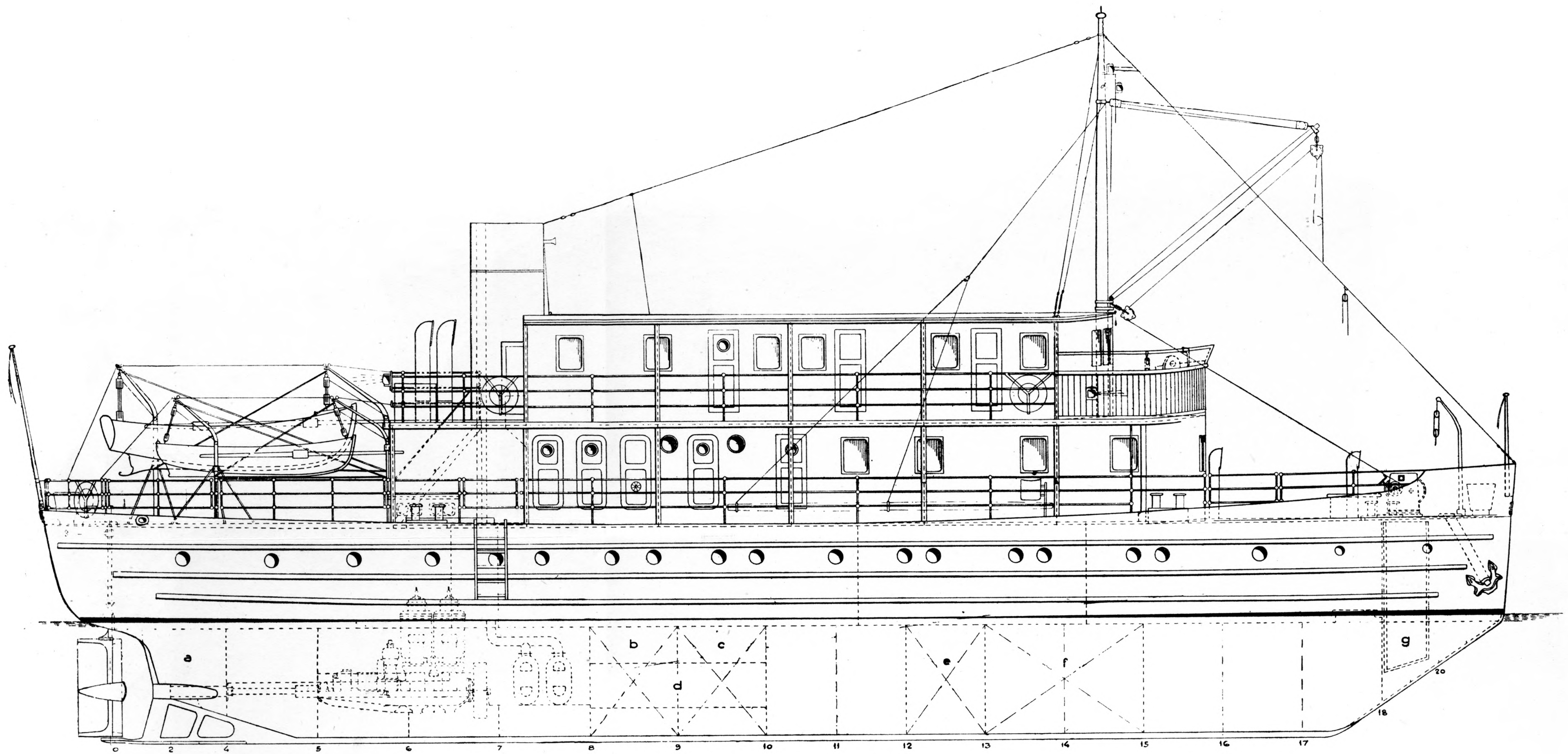


SWEDISH SURVEYING VESSEL "GUSTAF AF KLINT"

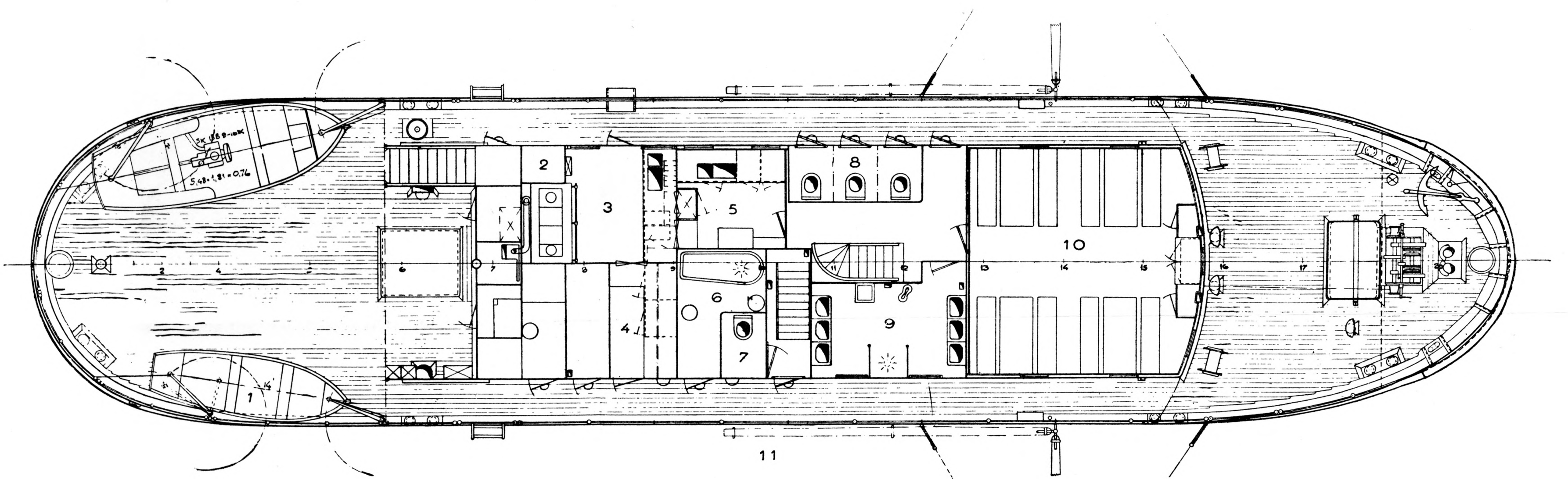
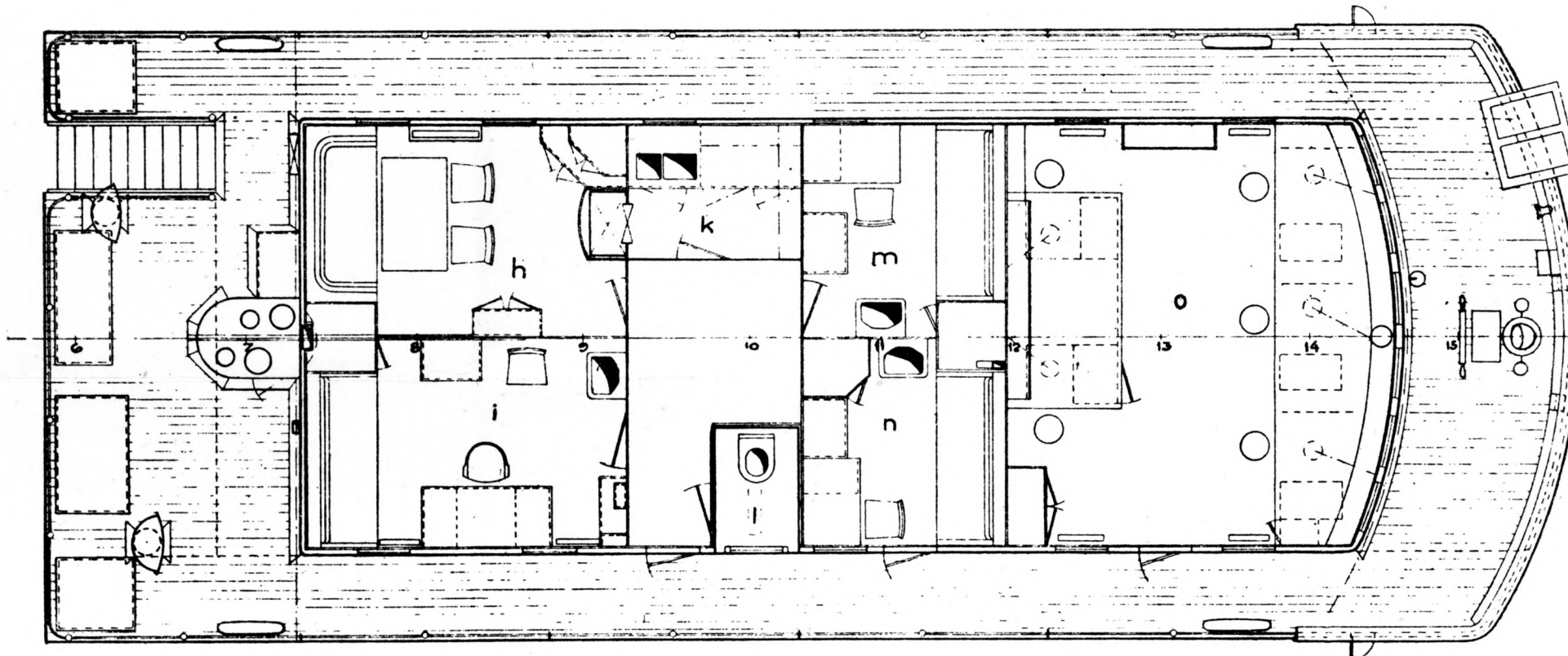
- | | |
|------------------------------------|------------------------------|
| 1. After Peak. | 26. Accumulator charging. |
| 2. Freshwater tank. | 27. Passage. |
| 3. Fuel-oil tank. | 28. "Aga" Kitchen Range. |
| 4. Chain-well. | 29. Kitchen. |
| 5. Life-boat. | 30. Crew's Lavatories. |
| 6. Motor-boat. | 31. Bench. |
| 7. Surveying boat. | 32. Table. |
| 8. Draughtsmen's Room. | 33. Crew's Mess. |
| 9. Radio Room. | 34. Storerooms. |
| 10. Upper Deck. | 35. Coal. |
| 11. Locker. | 36. Paints Bunker. |
| 12. Spare draughtsmen's Room. | 37. Potato Locker. |
| 13. Captain's Saloon. | 38. Gunroom. |
| 14. Captain's cabin. | 39. Officers' Pantry. |
| 15. Writing Room. | 40. Refrigerator. |
| 16. Officer's cabin No. 1. | 41. Pantry. |
| 17. Drawing Board. | 42. Food provisions shelves. |
| 18. Officer's cabin No. 2. | 43. Hospital. |
| 19. Officer's cabin No. 3. | 44. Petty Officer's Baths. |
| 20. Instrument cupboard. | 45. Access to lower deck. |
| 21. Storeroom for food provisions. | 46. Corridor. |
| 22. Waterproof clothing. | 47. Petty Officers' W.C. |
| 23. Officer's W.C. | 48. Hands' W.C. |
| 24. Motor Bulkhead. | 49. Main Deck. |

NAVIRE HYDROGRAPHE SUEDOIS "GUSTAF AF KLINT"

- | | |
|---------------------------------|-------------------------------|
| 1. Pic arrière. | 26. Charge des accumulateurs. |
| 2. Caisse à eau douce. | 27. Passage. |
| 3. Réservoir à mazout. | 28. Fourneau « Aga ». |
| 4. Puits aux chaînes. | 29. Cuisine. |
| 5. Canot de sauvetage. | 30. Lavabos de l'équipage. |
| 6. Canot à moteur. | 31. Banquette. |
| 7. Embarcation hydrographe. | 32. Table. |
| 8. Salle de dessin. | 33. Poste d'équipage. |
| 9. Cabine radiotélégraphique. | 34. Magasins. |
| 10. Pont supérieur. | 35. Charbon. |
| 11. Coffre. | 36. Soute à peinture. |
| 12. Salle de dessin de réserve. | 37. Coffre à pommes de terre. |
| 13. Salon du commandant. | 38. Carré. |
| 14. Cabine du commandant. | 39. Office. |
| 15. Bureau. | 40. Glacière. |
| 16. Cabine d'officier n° 1. | 41. Office. |
| 17. Table à dessin. | 42. Étagères à vivres. |
| 18. Cabine d'officier n° 2. | 43. Infirmerie. |
| 19. Cabine d'officier n° 3. | 44. Bains des sous-officiers. |
| 20. Armoire à instruments. | 45. Accès au faux pont. |
| 21. Coqueron. | 46. Corridor. |
| 22. Manteaux de pluie. | 47. W.C. des sous-officiers. |
| 23. W.C. officiers. | 48. W.C. de l'équipage. |
| 24. Cloison des moteurs. | 49. Pont principal. |
| 25. Chambre des accumulateurs. | |



Scale 0 1 2 3 4 5 6 7 8 9 10 mètres Echelle



**SURVEYING VESSEL
OF THE SWEDISH HYDROGRAPHIC OFFICE "RAN"**

**NAVIRE HYDROGRAPHE
DU SERVICE HYDROGRAPHIQUE SUEDOIS "RAN"**

DIMENSIONS

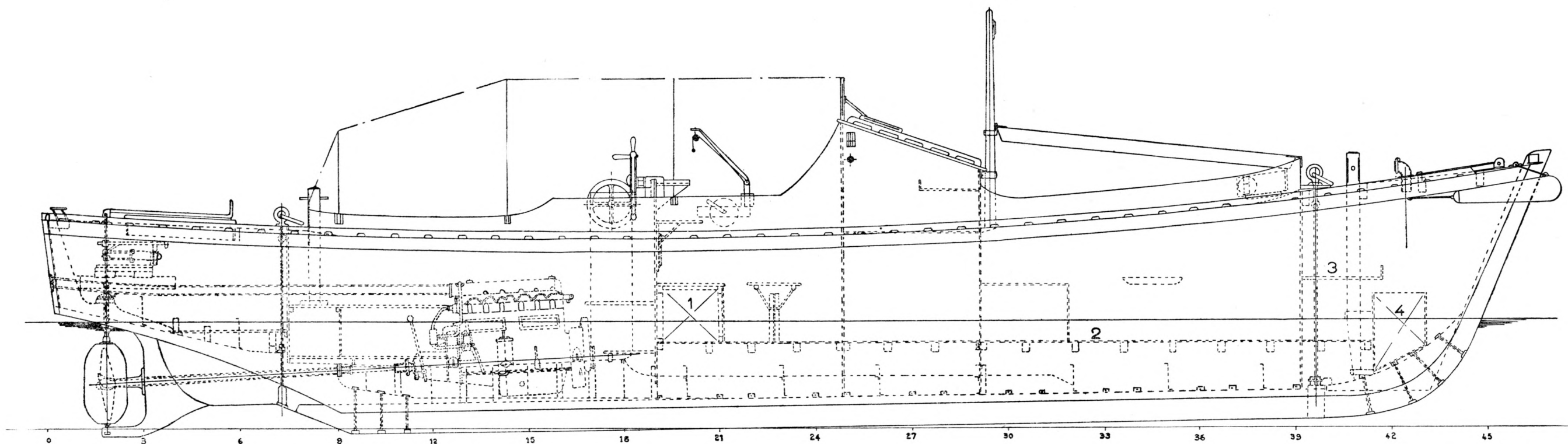
| | |
|---|----------|
| Length overall (Longueur totale) | 31 m. 60 |
| Length between perpendiculars (Longueur entre perpendiculaires) | 29 m. 80 |
| Beam (Largeur au couple) | 7 m. 00 |
| Moulded depth (Creux à partir du pont principal) | 4 m. 50 |
| Depth from lower deck (Creux à partir du pont inférieur) | 2 m. 35 |

- (1)
- a. After peak tank.
 - b-c. Fuel oil tank.
 - d. Tiller chain tunnel.
 - e. Salt-water tank.
 - f. Freshwater tank.
 - g. Chain-well.
 - h. Gunroom.
 - i. Commanding Officer.
 - l. W.C.
 - m. Officer.
 - n. Spare room.
 - o. Draughtsmen's room.

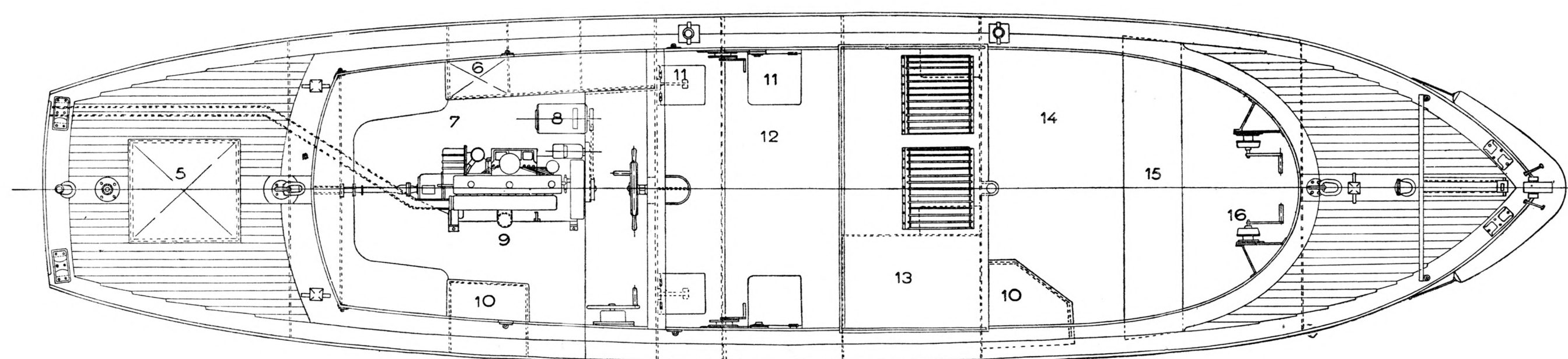
- (2)
- 1. Yawl.
 - 2. Coalbox.
 - 3. Kitchen.
 - 4. Storeroom for provisions.
 - 5. Crew's kitchen quarters.
 - 6. Baths.
 - 7. W.C.
 - 8. Ship's latrines.
 - 9. Ship's lavatories.
 - 10. Crew's mess.
 - 11. Main deck.

- (1)
- a. Pic arrière.
 - b-c. Réservoir à mazout.
 - d. Tunnel du gouvernail.
 - e. Réservoir d'eau salée.
 - f. Réservoir d'eau douce.
 - g. Puits aux chaînes.
 - h. Carré.
 - i. Commandant.
 - k. Office.
 - l. W.C.
 - m. Officier.
 - n. Chambre de réserve.
 - o. Salle de dessin.

- (2)
- 1. Yole.
 - 2. Coffre à charbon.
 - 3. Cuisine.
 - 4. Coqueron.
 - 5. Cuisine de l'équipage.
 - 6. Bains.
 - 7. W.C.
 - 8. Bouteilles de l'équipage.
 - 9. Lavabos de l'équipage.
 - 10. Réfectoire de l'équipage.
 - 11. Pont principal.



Scale 0 1 2 3 4 5 mètres Echelle

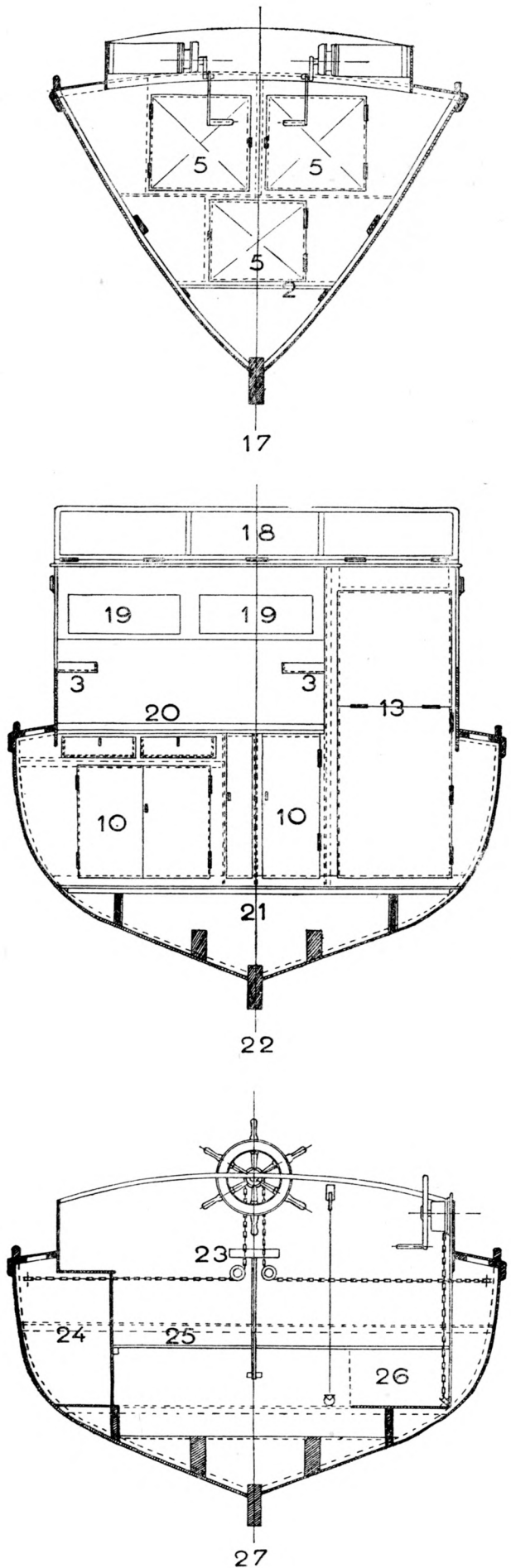


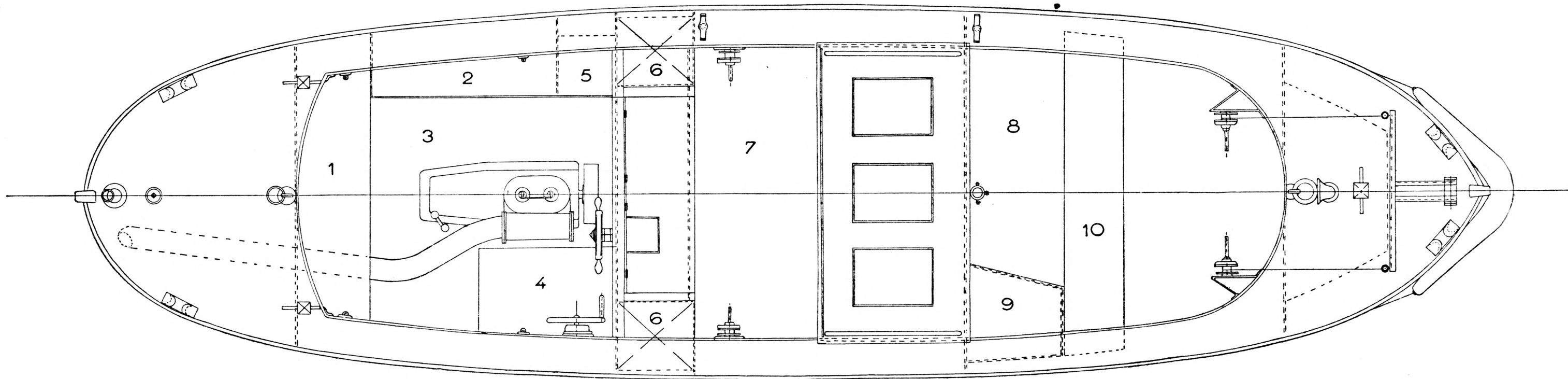
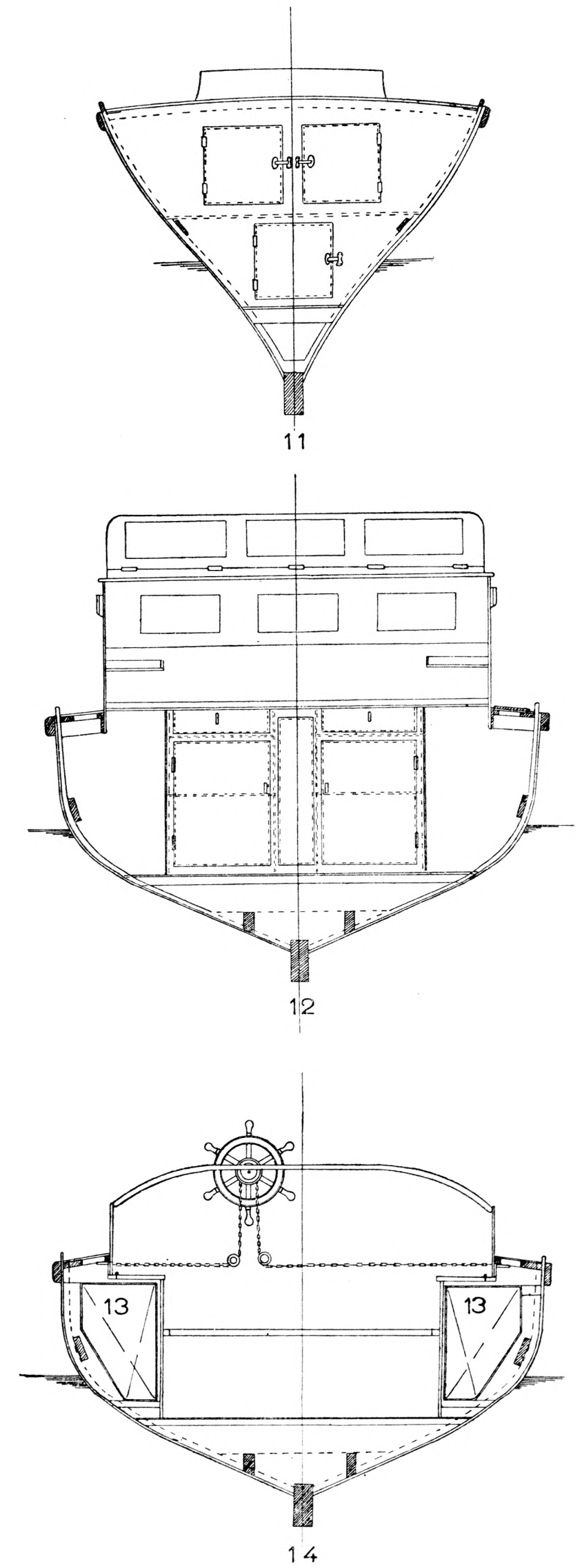
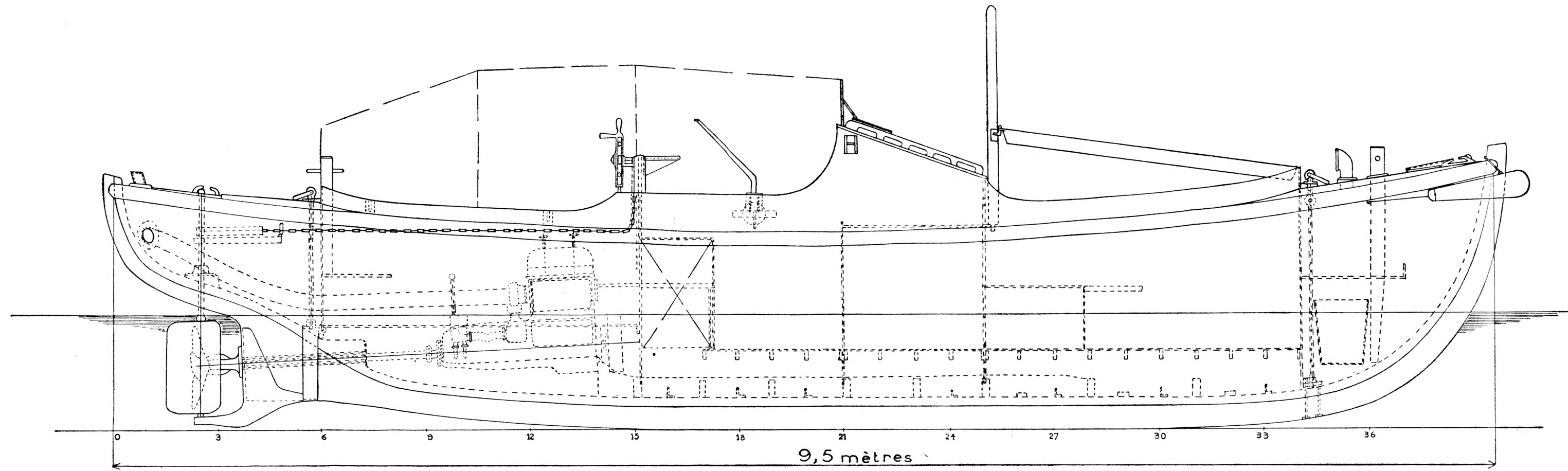
**11.25 m. ECHO SOUNDING MOTOR-BOAT
OF THE SWEDISH HYDROGRAPHIC OFFICE**

- | | |
|-------------------------|--|
| 1. Fuel-oil. | 16. Winch for bar sweep. |
| 2. Store. | 17. Cross Section at frame No. 39, seen from rear. |
| 3. Platform. | 18. Windscreen with hinged pane. |
| 4. Chain Locker. | 19. Window. |
| 5. Hatchway. | 20. Chartboard. |
| 6. Greasing-oil. | 21. Transmitter case. |
| 7. Motorhouse. | 22. Cross Section at frame No. 25, seen from rear. |
| 8. Generator. | 23. Adjustable seats. |
| 9. 6-cylinder motor. | 24. Instrument cupboard. |
| 10. Cupboard. | 25. Steering platform. |
| 11. Hinged seats. | 26. Location of battery. |
| 12. Surveyors' Room. | 27. Cross Section at frame No. 19, seen from rear. |
| 13. Echo sounder cabin. | |
| 14. Sounding room. | |
| 15. Bench. | |

**CANOT AUTOMOBILE DE 11 m. 25 POUR LE SONDAGE PAR LE SON
DU SERVICE HYDROGRAPHIQUE SUEDOIS**

- | | |
|-----------------------------------|---|
| 1. Mazout. | 16. Treuil pour la drague à barre. |
| 2. Soute. | 17. Section au couple 39, vue de l'arrière. |
| 3. Plateforme. | 18. Coupe-vent à vitre rabattable. |
| 4. Coffre à chaînes. | 19. Fenêtre. |
| 5. Panneau. | 20. Table à cartes. |
| 6. Huile de graissage. | 21. Emplacement pour les émetteurs. |
| 7. Chambre du moteur. | 22. Section au couple 25, vue de l'arrière. |
| 8. Générateur. | 23. Sièges réglables. |
| 9. Moteur à 6 cylindres. | 24. Armoire à instruments. |
| 10. Armoire. | 25. Plateforme de timonerie. |
| 11. Sièges rabattables. | 26. Emplacement de la batterie. |
| 12. Chambre des mètres. | 27. Section au couple 19, vue de l'arrière. |
| 13. Coffre du sondeur par le son. | |
| 14. Chambre de sondage. | |
| 15. Banc. | |





**9.50 m. MOTOR-BOAT
OF THE SWEDISH HYDROGRAPHIC OFFICE**

**CANOT AUTOMOBILE DE 9 m. 50
DU SERVICE HYDROGRAPHIQUE SUEDOIS**

- 1. Bench.
- 2. Instrument Cupboard.
- 3. Motorhouse.
- 4. Steersman's platform.
- 5. Greasing-oil tank (25 litres).
- 6. 100 litres fuel-oil.
- 7. Surveyors' Room.
- 8. Lower Room.

- 9. Corner Cupboard with coffer under-neath.
- 10. Bench.
- 11. Cross Section at frame No. 34.
- 12. Cross Section at frame No. 21.
- 13. 100 litres tank.
- 14. Cross Section at frame No. 15.

- 1. Banquette.
- 2. Armoire à instruments.
- 3. Chambre du moteur.
- 4. Plateforme du timonier.
- 5. Réservoir d'huile de graissage (25 litres).
- 6. 100 litres de mazout.
- 7. Chambre des métteurs.

- 8. Chambre basse.
- 9. Encoignure avec coffre en-dessous.
- 10. Banc.
- 11. Section au couple 34.
- 12. Section au couple 21.
- 13. Réservoir de 100 litres.
- 14. Section au couple 15.