

ORGANIZATION AND TRAINING OF PERSONNEL OF THE PHILIPPINE COAST AND GEODETIC SURVEY

The Philippine Coast and Geodetic Survey is an agency of the Philippine Government under the Department of National Defense. This Bureau is headed by a Director who holds the naval rank of Captain and an Assistant Director who holds the naval rank of Commander. Under their direction are two major divisions of the Bureau : the field personnel and the office civilian employees.

1. Field work involving combined operations in triangulation, leveling, geodetic and hydrographic surveying, coast pilot, tide and current observations, magnetic observations, and wire drag investigations is performed by the field force, at present composed of 44 commissioned officers and 197 enlisted men who are assigned to two 1 000-ton survey vessels and three 60-ton vessels.

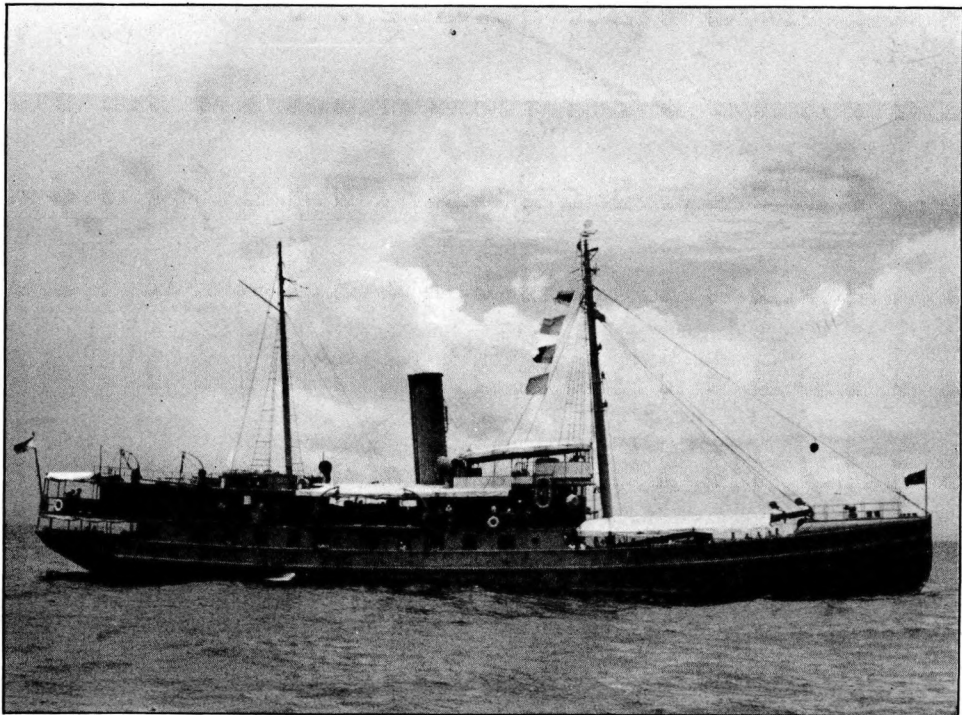


FIG. 1. — P.C. & G.S. S.S. *Fathomer*

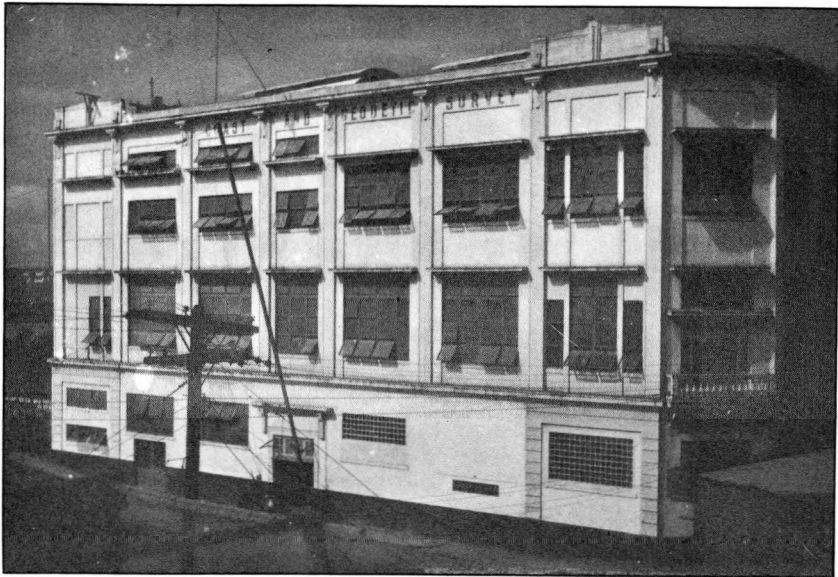


FIG. 2. — Bureau of Coast and Geodetic Survey (Office)

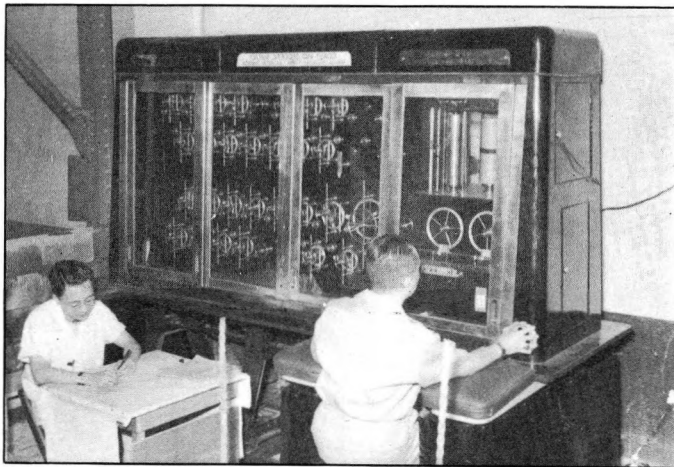


FIG. 3. — Tide Predicting Machine

2. The computation of triangulation, levelling, tide and current data; the compilation and reproduction of nautical charts and maps; and the preparation of technical publications are accomplished by members of the office force, composed of mathematicians, cartographers, photolithographers, printers, clerks, etc., numbering 167.

For effective administration, the operations of the Bureau are carried on by three branches, namely, the Personnel and Supply Branch, the Technical Branch, and the Operations Branch, all headed by commissioned officers. These branches are further broken down into divisions, sections and units headed by civilian employees and commissioned officers.



FIG. 4. — Demonstration on use of Tellurometer



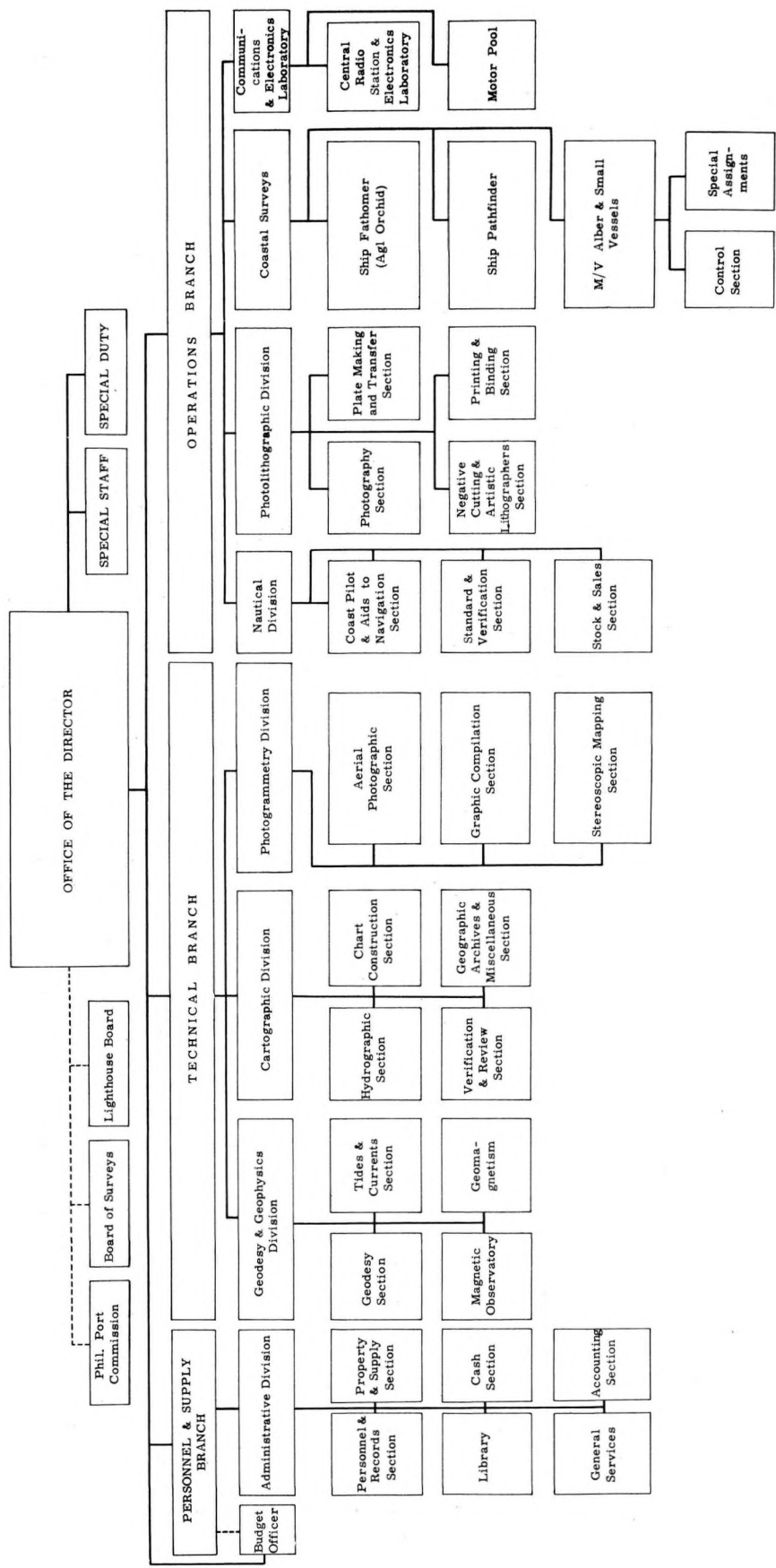
FIG. 5. — Aerial Photogrammetry

The Personnel and Supply Branch is responsible for the execution, coordination and supervision of the Administrative Division and the six (6) sections under it.

The Technical Branch has supervision over the Geodesy and Geophysics Division, the Cartographic Division, the Photogrammetry Division and the Magnetic Observatory.

The Operations Branch exercises full supervision and control over the Nautical Division; Photolithographic Division; the Coastal Surveys Division under which come the survey vessels; and the Communications and Electronics Laboratory.

ORGANIZATION CHART



Recruitment of personnel is a function of the Personnel and Supply Branch. Training of the civilian personnel of the Bureau is a function of the Administrative Division and comes directly under the Training Officer who plans, coordinates, and supervises all training programs with the cooperation of the chiefs of branches and chiefs of divisions.

Civilian personnel are appointed and/or promoted in accordance with Civil Service rules. Commissioned officers of the field force are engineers (civil, mechanical, mining, electrical, geodetic, etc.) who serve a minimum of in-service training for six months as cadets before they are commissioned originally to the rank of ensigns. By legislative provisions, they are entitled to time-in-grade promotions to higher ranks. Enlisted personnel serve under the vessels on enlisted status, renewable every year.

Commissioned officers and civilian employees are, from time to time, granted fellowships and in-service training in local as well as foreign institutions and hydrographic offices.

With this organization, the bureau carries out its functions of surveying and charting the coastal regions of the Philippines; determining precise geographical positions and elevations in the interior of the country; making tide and current surveys; investigating changes in the earth's magnetism; and disseminating its technical information, which is meticulously collected, analyzed and compiled in the form of nautical charts, maps and other printed publications.