

DANISH SURVEY LAUNCHES

During the early spring of 1959 two motor launches were built in Denmark for survey work in Greenland inshore waters.

Particulars :

Length	14.5 m
Breadth	4.0 m
Draft	1.5 m
Weight	27 t
Propulsion	1 105-HP Penta Diesel, operated from the wheelhouse
Max. speed	8.7 knots
Power supply	1 auxiliary engine
Radio	1 70-watt set for long-distance communication
	1 VHF set for tactical use
Galley	electric
Central heating	1 oil-burning boiler
Rudder	Kitchen
Max. complement	1 officer, 6 crew
Survey equipment	Echo sounding machine Raydist or Decca.

The launches are built of wood so solidly as to withstand striking a rock at 6 knots without suffering essential damage.

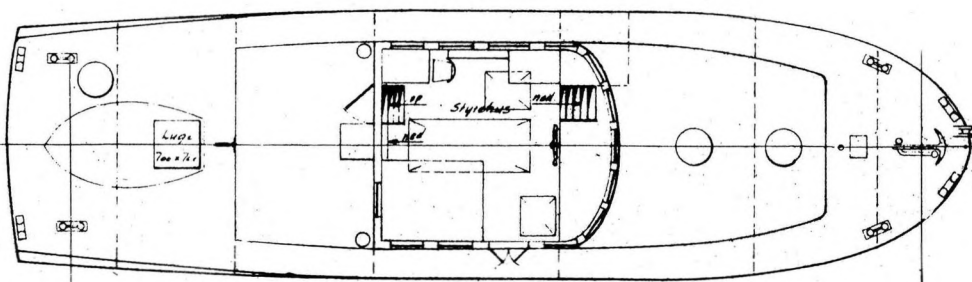
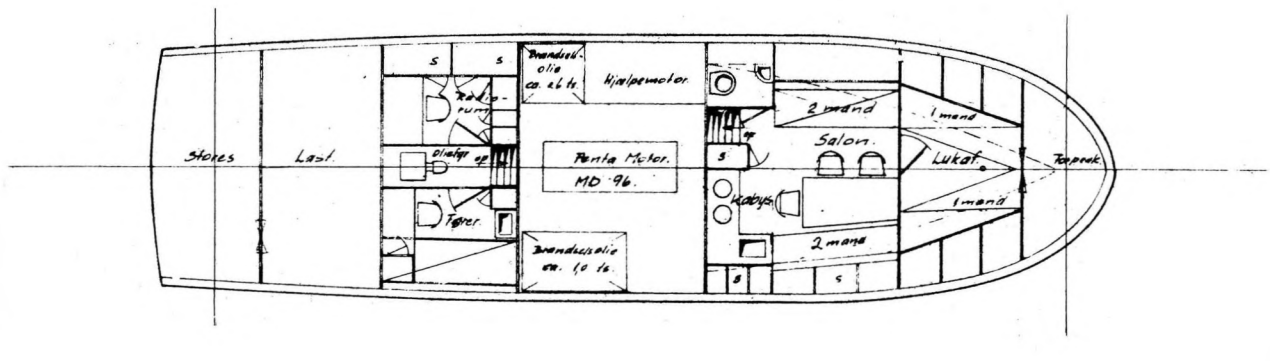
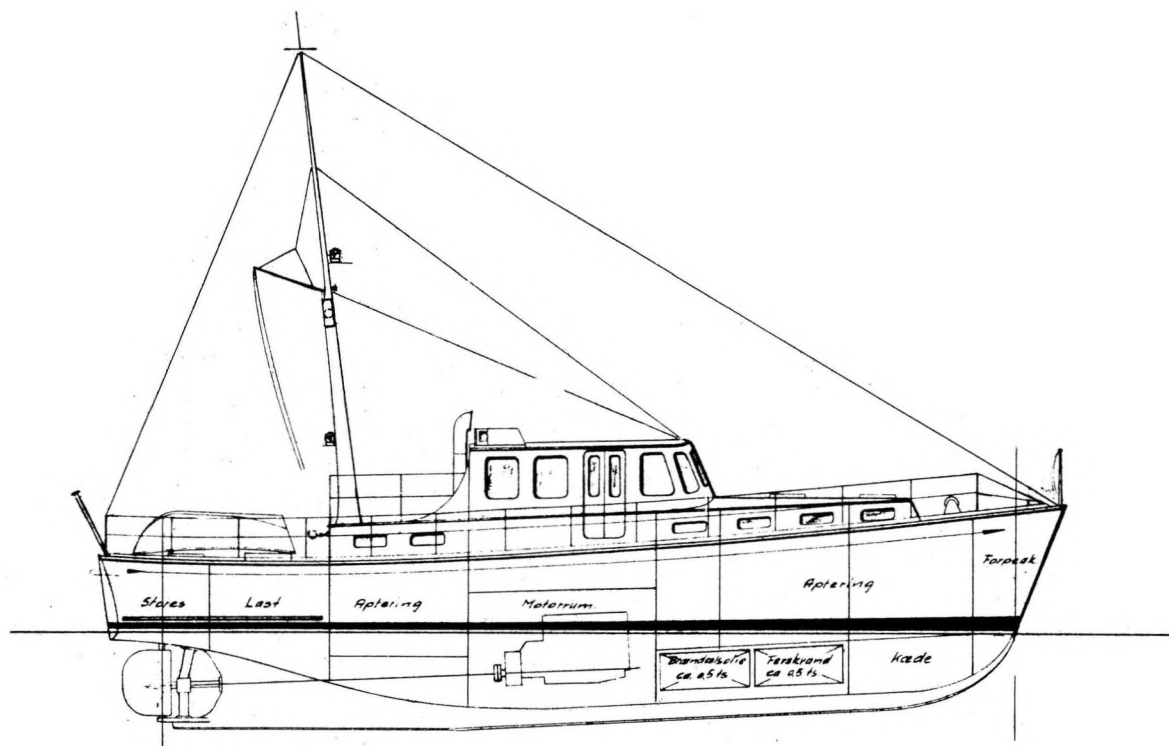
All hatches are watertight.

The wheelhouse which serves as survey room has ample space for a chart table, echo sounder, and Raydist or Decca equipment.

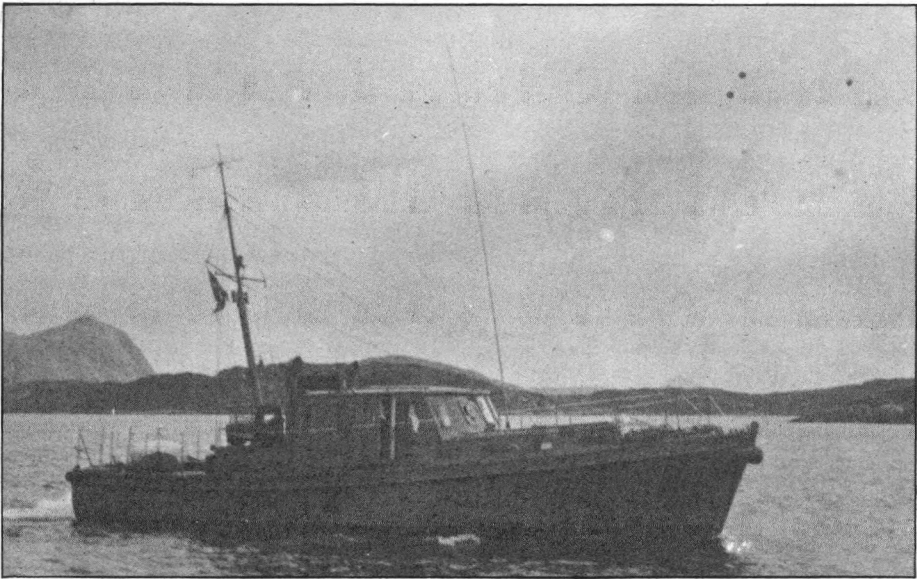
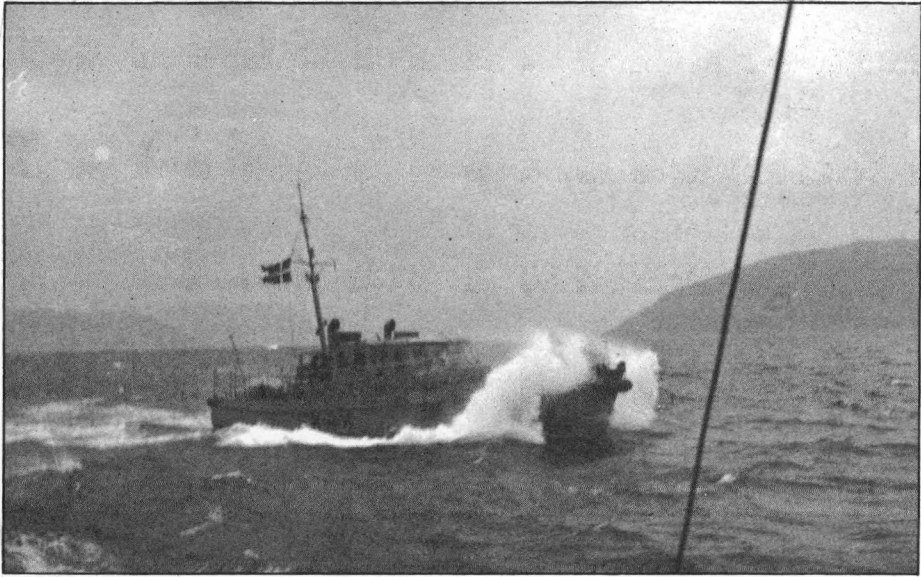
A bridge for optical surveys is placed astern of the wheelhouse.

The launches have been used in Greenland this year and have proved excellent for this special kind of work.

They have been tried in the open sea — wind force 7 — and did very well, whatever the direction of wind and sea.



Danish Survey Launches.



Danish Survey Launches.