

NEW ZEALAND HYDROGRAPHIC SERVICE

by Commander F. W. HUNT, R. N.
Director of Hydrography

The New Zealand Hydrographic Service, recently admitted to full membership of the International Hydrographic Bureau, is a branch of the Navy Department and the seafaring elements are members of the Royal New Zealand Navy.

The formation of the branch was begun in 1949 when the Australian River-Class Frigate *Lachlan* was borrowed by the New Zealand Navy for surveying duties. After a partial conversion and the fitting of a chartroom, she started work on the New Zealand coasts.

In 1951 a start was made on the formation of a Hydrographic Branch of civil Hydrographic Officers and this branch, consisting at first of two only, was consolidated in the Navy Office in 1953.

The area of responsibility taken over by New Zealand from the U. K. Hydrographer, previously responsible for surveying in these parts, includes all the Pacific Ocean in which New Zealand dependencies, etc., lie.

Shortly after commencement of active surveying the New Zealand Service acquired two 72-foot harbour-defence motor launches, and the New Zealand surveying fleet as then constituted remains the same today. The main details are given in the IHB Yearbook.

The present aims and organization are summarized below.

Long-Term Program

This is to chart the whole coast of New Zealand on a medium coastal scale of 1/200 000. For this purpose a comprehensive survey on a scale of 1/72 000 is being carried out. This is the dominant plan into which all others are dovetailed. It is intended to survey and chart all harbours, anchorages and inlets on an appropriate larger scale. In addition, such work as may be required in the New Zealand area of the Southwest Pacific will be carried out. Where appropriate this will be a matter for liaison agreements with adjacent hydrographic authorities.

Short-Term Program

The Director of Hydrography submits his annual program to an advisory committee consisting of representatives of shipping and marine interests of New Zealand. This committee may make recommendations regarding immediate arrangements of priorities for certain areas, etc.

Hydrographic Surveyors

There are at present eight hydrographic surveyors employed. The Director is an R. N. officer on loan but he will shortly be relieved by a New Zealander trained in the New Zealand and United Kingdom Hydrographic Services.

The hydrographic surveyors are distributed as follows.

Lachlan

One Commander — In command and in charge of survey (also the Director of Hydrography).

Four Lieutenant Commanders — Surveyors and Ship's Officers and Lieutenants.

Survey Motor Launches

One Lieutenant Commander and one Lieutenant.

Hydrographic Office

One Lieutenant Commander — As Assistant Director of Hydrography.

Hydrographic Branch and Chart Depot

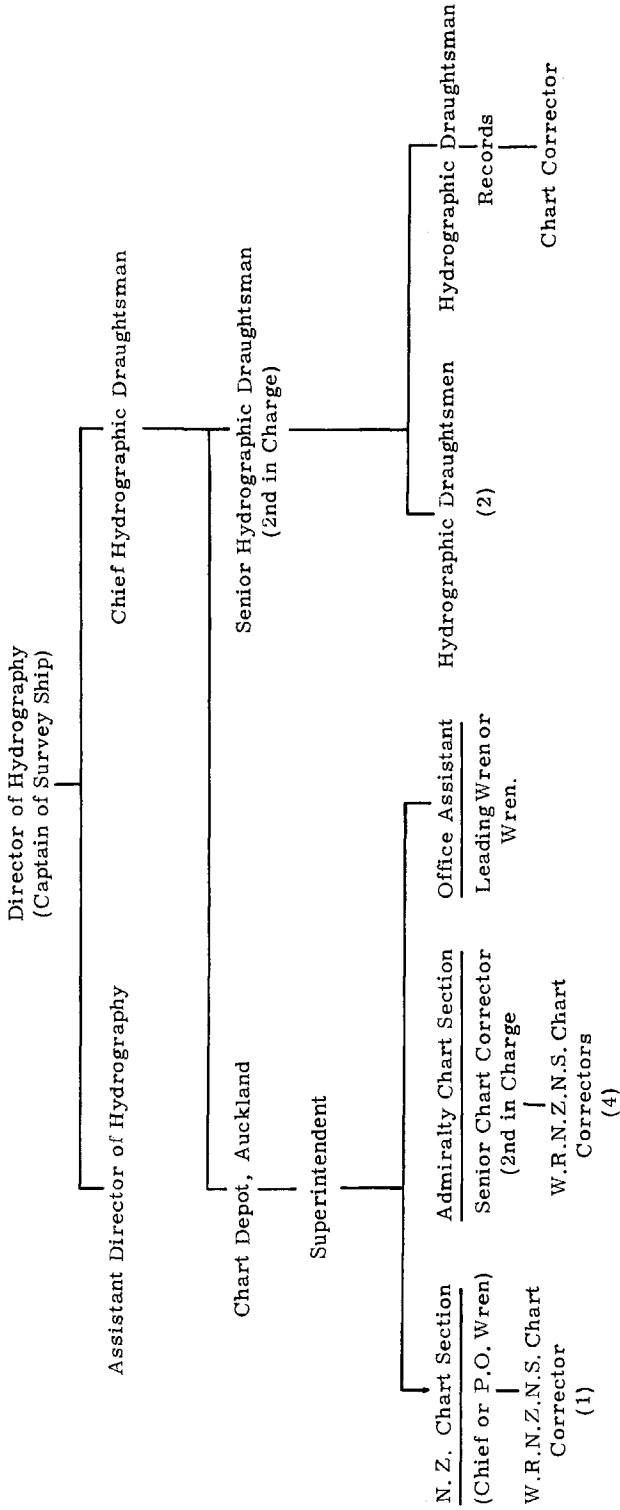
The Hydrographic Branch is ashore in Wellington and has its offices in the same building as the Navy Department. The Chart Depot is adjacent to the Naval Dockyard in Auckland.

A New Zealand series of charts is compiled and published by the Hydrographic Branch. The charts are printed by the Government Printer and are distributed to agents at home and overseas by the Chart Depot.

Organization

The organization ashore is shown in the attached table.

**ORGANIZATION OF THE HYDROGRAPHIC BRANCH
NAVY DEPARTMENT**



Note - Wren (W.R.N.Z.N.S.) : member of Women's Royal New Zealand Naval Service.