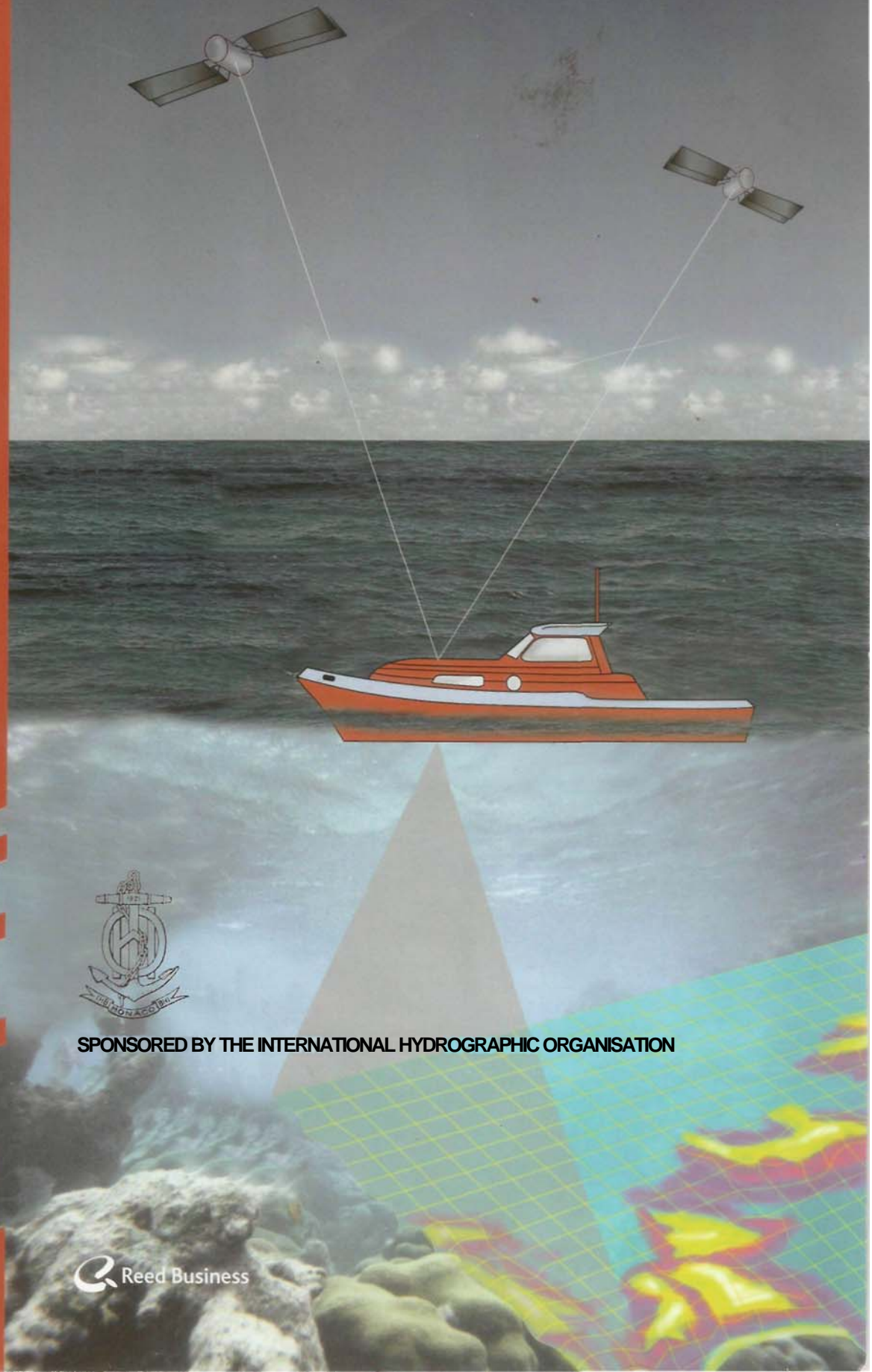



The International Hydrographic Review

Vol.8, No.2

November 2007



SPONSORED BY THE INTERNATIONAL HYDROGRAPHIC ORGANISATION

 Reed Business

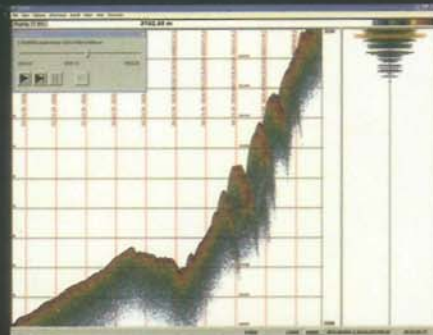
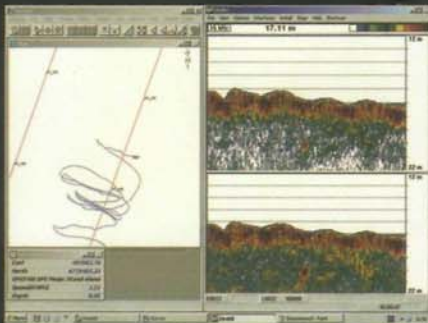
Singlebeam echo sounders...

Kongsberg Maritime offers a complete range of single-beam echo sounders

All instruments are characterised by high mapping productivity in combination with exceptionally high sounding accuracy, and a dense pattern of soundings to cover the seafloor in order to reveal all details on the bottom.

EA 400 - Singlebeam

- Shallow to medium depth
- High resolution side looking
- Second layer detection
- 15 kHz sub bottom profiler for shallow depth
- Splash proof / portable version available



EA 600 - Singlebeam

- Full ocean depth
- Pinger track mode
- Multipulse mode
- Along track slope measurement

- Raw format for replaying
- xyz, ASCII format for processing
- Easy connection for 3. party software
- Options for 3. party transducers
- Sound velocity profile compensation
- Sophisticated software algorithms for bottom tracking

Kongsberg Maritime

Norway: +47 33 03 41 00, USA: +1 425 712 1107
Canada: +1 902 468 2268, UK: +44 1224 22 65 00
Italy: +39 06 615 22 476, Singapore: +65 68 99 58 00

www.kongsberg.com
e-mail: subsea@kongsberg.com



KONGSBERG

Vol. 8, No. 2

November 2007

THE INTERNATIONAL HYDROGRAPHIC REVIEW

SPONSORED BY THE INTERNATIONAL HYDROGRAPHIC ORGANISATION

Published by:

Reed Business, P.O. Box 11 2, 8530 AC Lemmer, The Netherlands
Tel.: +31 (0)514 56 18 54, Fax: +31 (0) 514 56 38 98
E-mail: geo@reedbusiness.nl, Website: www.reedbusiness-geo.nl

Contents

■ Editorial

By Adam J. Kerr, Editor 7

■ Articles

Continental Shelf Submissions: an Updated Record
By Ron Macnab, Geological Survey of Canada (Retired), (Canada) 9

**Predicting Sand Wave Dynamics
On the Netherlands Continental Shelf**
By Roderik Lindenbergh, Delft University of Technology; Leendert Dorst,
Netherlands Hydrographic Service and University of Twente; Hans Wüst,
Ministry of Transport, Public Works and Water Management, Centre for Transport
and Navigation, and Peter Menting, Fugro-Inpark B.V. (The Netherlands) 25

**Encoding AIS Binary Messages in XML Format
for Providing Hydrographic-related Information**
Kurt Schwehr and Lee Alexander, Center for Coastal and Ocean Mapping/Joint
Hydrographic Center, University of New Hampshire, Durham, New Hampshire (USA) 37

GPS Techniques in Tidal Modelling
Dave Mann, Survey Support Manager, Gardline Geosurvey Ltd (UK) 59

■ Notes

**The WEND Concept for a Worldwide ENC Database - Past or Future?
A Review of Progress and a Look to the Future**
Horst Hecht, Federal Maritime and Hydrographic Agency (BSH), Hamburg/
Rostock (Germany); Abri Kampfer, Hydrographic Office, Cape Town (Republic of
South Africa); Lee Alexander, CCOM-JHC, University of New Hampshire, Durham,
New Hampshire (USA) 73

**Relationship of Marine Information Overlays (MIOs) to Current/Future
IHO Standards**
By Dr. Lee Alexander, Chair and Michel Huet, Secretary, IHO-IEC Harmonization
Group on Marine Information Overlays (USA) 80

Spatial Solution To Determine A Trigonometric Point Of High Precision
By S.Ackermann, Università degli studi di Napoli "Parthenope" and A.Vassallo,
Istituto Idrografico della Marina (Italy) 83

■ Instructions for Contributors

90

The International Hydrographic Review

Publishing Company : Reed Business bv
 Publication Director : Durk Haarsma
 Editor-in-chief : Adam J. Kerr
 Editorial Board : Lee Alexander
 : Michael Casey
 : Captain Hugo Gorziglia (International Hydrographic Organisation)
 : Horst Hecht
 : Sean Hinds
 : Commander Anthony J. Withers RAN
 Editorial Manager : Joost Boers (joost.boers@reedbusiness.nl)
 Account Manager : Marjan de Vries (marjan.de.vries@reedbusiness.nl)
 Circulation Manager : Petra Hoekstra (petra.hoekstra@reedbusiness.nl)

Instructions for contributors

The International Hydrographic Review is an international journal published two times a year by Reed Business bv. It is sponsored by the International Hydrographic Organisation. It contains original papers concerning all aspects of hydrography and associated subjects. All articles are subjected to peer review and are expected to be 4,000 to 6,000 words long, although longer articles may be considered. It also provides a medium for discussions in the form of shorter Notes, that are typically 1,500 to 2,000 words in length.

Information on the layout of articles and the form of illustrations and references may be obtained by requesting 'Instructions to Authors' from the Editor. They are also published in the first issue of each year. Submissions should be sent to:

Mr Adam Kerr
 Flagstaff Cottage
 Lamorna
 Penzance
 Cornwall TR19 6XQ
 UNITED KINGDOM
 Tel.: +44 (0)1736 - 731 228
 Fax: +44 (0)1736 - 731 976
 E-mail: Adam.J.Kerr@btopenworld.com

Subscription Information

The Journal is published two times a year by Reed Business bv and can be obtained regularly by subscription. Please find below the subscription rates:

	Europe	All other countries
1 year Individual	€ 94.00	US\$ 120.00
1 year Library	€112.00	US\$ 108.00

Should you wish to take out a subscription then please contact our circulation manager.

Reprints

Reprints of all articles (including articles published in earlier issues) can be ordered. For more information, please contact Marion Zeinstra: ans.platenkamp@reedbusiness.nl.

Copyright

Any permission needed to incorporate material published elsewhere is the responsibility of the authors and it will be assumed that such permission has been maintained. The publisher is not responsible for statements made in the articles or advertisements nor is responsible for typing or converting errors. No material may be reproduced in whole or in part without written permission of Reed Business bv.