

The International Hydrographic Review

Instructions for contributors

The International Hydrographic Review is an international journal publishing original works on all aspects of hydrography and associated subjects, ranging from the latest technical developments to history. It also provides a medium for discussions in the form of shorter articles and notes.

Submissions should be sent to:

Mr Adam J. Kerr
 Flagstaff Cottage,
 Lamorna,
 Penzance,
 Cornwall TR19 6XQ
 United Kingdom
 Tel: 44 1736 731 228
 Fax: 44 1736 731 976
 e-mail: Adam.J.Kerr@btopenworld.com

ARTICLES should be 4,000-6,000 words long, although longer articles may be considered. Authors are responsible for ensuring that all manuscripts are accurately typed before final submission. Contributions are normally received with the understanding that they comprise original, unpublished material and are not being submitted for publication elsewhere. All articles will be refereed by at least two persons, to ensure both accuracy and relevance and amendments to the script may be required before final acceptance. On acceptance contributions are subject to editorial amendment. Authors will receive a proof copy of the final article before publication. Reasonable amendments may be made by the author at that time.

NOTES of approximately 1,500-2,500 words may be accepted if the subject does not lend itself to a full article. These will not be refereed but will be subject to editorial comment and amendments.

MEETING REPORTS. When appropriate the Review may contain reports of relevant meetings.

BOOK REVIEWS should normally be approximately 1,000 words in length.

Layout of Articles

- Short title (up to 40 characters including spaces), subtitle (if desired), author(s) name(s) and affiliation(s).
- Abstract of approximately 100 words, outlining in a single paragraph, the aims, scope and conclusions of the paper.
- Main body of text, with sub-titles to emphasise changes of topic. Ideally in blocks of approximately 500 words.
- References.
- Appendices as required.
- Illustrations in original form with captions, provided separately from the text.

References

Bibliographical references should be listed at the end of the articles in the standard Harvard form. Footnotes should be kept

to a minimum and the metric system used throughout. References should take the following form: In the body of the text, the author(s) name(s) followed by the year of publication, all in parentheses e.g. (Smith 1975). The list of references should be at the end in the following form: For journals: Authors name followed by initials; additional authors' names, the year in parentheses, the title of the article, the name of the journal in italics, the number of the journal and the pages in the journal e.g. Smith, J. and Brown, P. (1975). Errors in Multibeam surveys. *Hydrographic Journal*, 99, 24-32. For books: Author's name, other authors' names, date in parentheses, title of book in italics, publisher, place published. e.g. Smith, J. (1981) *Continental Shelf Limits*. Oxford University Press, Oxford.

Delivery of Material

Typescript: Text should be attached to an e-mail as a WORD document.

Illustrations: Should be separated from the WORD file. We prefer to receive hard copy illustrations (e.g. photographs, slides or negatives). If you decide to deliver illustrations in digital form, please note that the minimum resolution of the illustrations should be 367 dpi at reproduction size (10X15cm) and conform to one of the following formats: TIFF, GIF, JPEG, or EPS. These also should be sent as an attachment to an e-mail. All illustrations can be in colour since the magazine is completely in colour.

Copyright

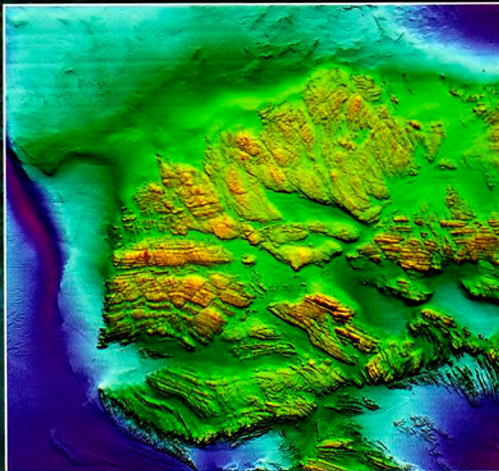
Any permission needed to incorporate material published elsewhere is the responsibility of the authors and it will be assumed that such permission has been maintained.

Requirement for Personal Photograph and Biography

Following the acceptance of the contribution, authors should provide short biographies and a head and shoulders photograph of all authors.

When it's a question of Hydrographic Surveys... ...Ask Fugro

Fugro offers integrated, turn-key solutions for local and national governments using multibeam echosounders, airborne hydrographic / topographic lidar and AUVs.



Civil Hydrography

Coastal Zone Mapping

UNCLOS and EEZ

Essential fish habitats (mapping)

Inundation Mapping
(tsunami, storm surge)

Cyclones

Shoreline Delineation

Full metocean and tides capability

GIS-based planning, applications
and data delivery

Aggregates

Sand Sourcing

Fugro Pelagos, Inc., San Diego Tel: +1 858 427 2005 Fax: +1 858 292 5308

Fugro OSAE GmbH, Bremen Tel: +49 4212 239150 Fax: +49 4212 239151

Fugro Survey (Middle East) Ltd., Abu Dhabi Tel: +971 2 554 7810 Fax: +971 2 554 7811

Fugro Survey Pty Ltd., Perth Tel: +61 8 9344 7166 Fax: +61 8 9344 8783

Email: hydrolidar@fugro.com

www.fugro.com



NO OTHER COMPANY CAN PROVIDE THE SAME COMPREHENSIVE RANGE OF GEOTECHNICAL, SURVEY AND GEOSCIENCE SERVICES

A DIGITAL SOLUTION FOR HYDROGRAPHIC OFFICES AND CHART PRODUCERS

The fully integrated ENC-based cartographic production environment that includes:

- S-57 Object Oriented Database
- Electronic charts production and updating (ENC, AML, Inland ENC, etc.)
- Paper charts out of ENCs production and maintenance (INT1, INT2, M4, etc.)
- Notices to Mariners and other nautical publications compilation and design
- On-line Data Services (charts, publications, catalogues on the Internet, automated NtM delivery, etc.)

dKart Technology

- MORE THAN JUST TOOLS
- A COMPLETE PRODUCTION TECHNOLOGY

Members of dKart Office family:

- dKart Inspector
- dKart Editor
- dKart Publisher
- dKart FODB
- dKart Archive
- dKart Catalogue
- dKart WEB Server
- dKart Hydrographer
- dKart Product Generator
- dKart Exchange Set Verifier
- dKart NtM Production



Hovlandsveien 52, P.O.Box 212,
N-4379 Egersund, Norway
Tel.: + 47 51 464960
Fax: + 47 51 464701
E-mail: info@hydroservice.no