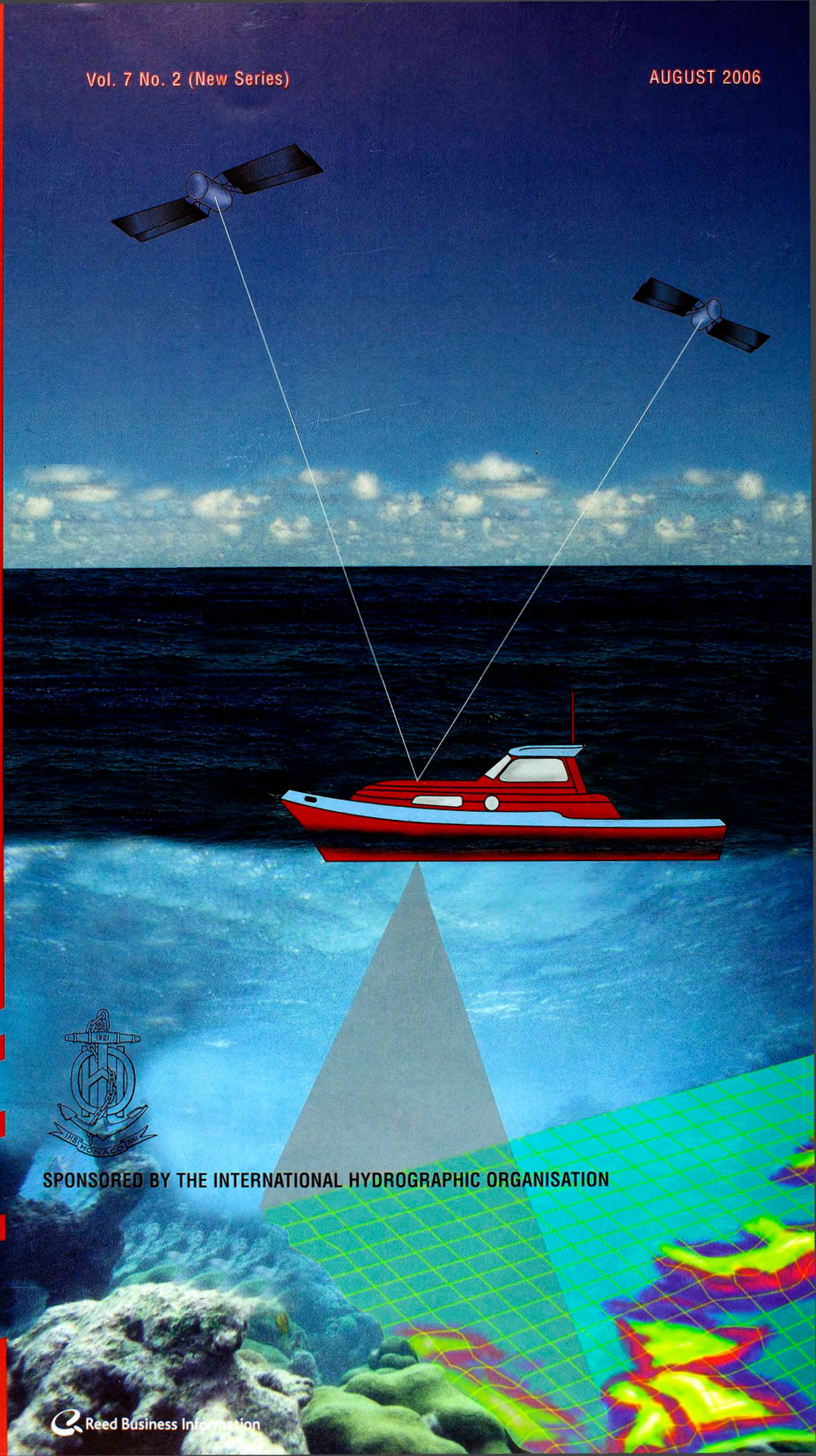


Vol. 7 No. 2 (New Series)

AUGUST 2006

# The International Hydrographic Review



SPONSORED BY THE INTERNATIONAL HYDROGRAPHIC ORGANISATION

# Multibeam echosounder

Shallow to medium water depths

## EM 710 - New standard for Flexibility and Precision

### New technology:

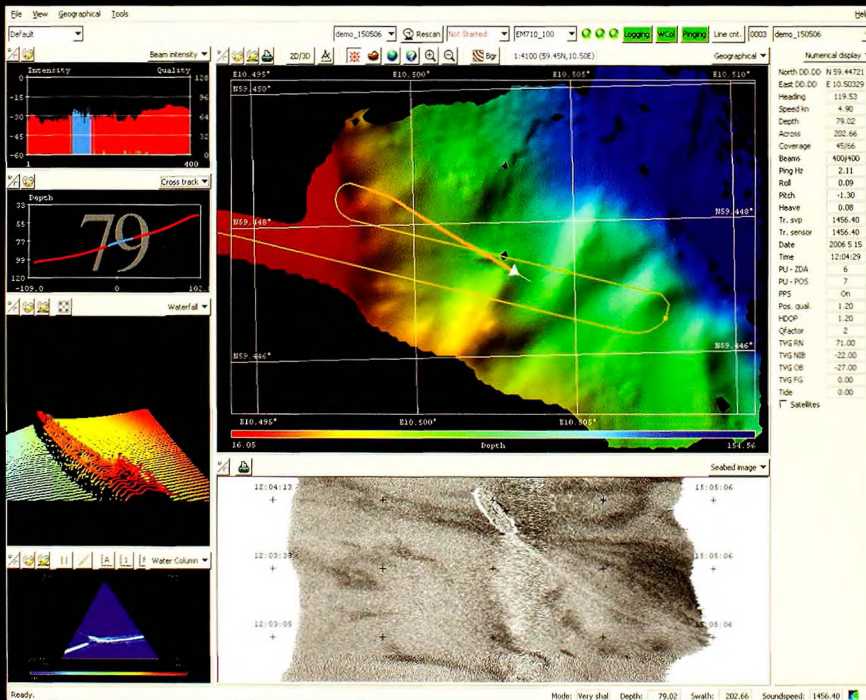
- Wideband transducers using composite ceramic technology
- Fully programmable transmit pulse waveforms
- Floating point, 140dB dynamic range receivers
- High resolution beam processing for improved resolution

### Main system features:

- 70-100kHz frequency, up to 2000m range capability
- Beams actively stabilized for yaw, pitch, roll
- Beams focusing for both transmit and reception
- Choice of transducer sizes/resolution 0.5 to 2 degrees
- Transducers for permanent hull mounting or portable use
- Chirp pulse waveforms with coherent signal compression on reception
- Calibrated seabed imagery as well as imaging of reflectors in water column

Kongsberg Maritime proudly introduces the EM 710 concept.

Based upon 20 years of experience with multibeam echosounders, we are launching a system packed with new technology.



Underwater instrumentation ▶ SONARS ▶ TELEMETRY ▶ POSITIONING ▶ HYDROGRAPHIC ECHOSOUNDERS ▶ CAMERAS AND LIGHTS ▶ AUTONOMOUS UNDERWATER VEHICLE

Norway: +4733034100, US A: +14257121107  
 Canada: +19024682268, UK: +44122422 6500  
 Italy: +390661522476, Singapore: +6568899 5800

www.kongsberg.com  
 e-mail: subsea@kongsberg.com



KONGSBERG

Vol. 7 No. 2 (New Series)

August 2006

# THE INTERNATIONAL HYDROGRAPHIC REVIEW

SPONSORED BY THE INTERNATIONAL HYDROGRAPHIC ORGANISATION

*Published by:*

Reed Business Information, P.O. Box 112, 8530 AC Lemmer, The Netherlands

Tel.: +31 (514) 56 18 54, Fax: +31 (514) 56 38 98

E-mail: [geo@reedbusiness.nl](mailto:geo@reedbusiness.nl), Website: [www.reedbusiness-geo.nl](http://www.reedbusiness-geo.nl)



## Contents

## ■ Editorial

By Adam J. Kerr, Editor 5

## ■ Articles

**Marine Scientific Research under UNCLOS: a Vital Global Resource?**

By Tim Daniel, partner, Kendall Freeman, UK 6

**Empirical Object Detection Performance of LIDAR and Multibeam Sonar Systems in Long Island Sound**

By LCDR Shepard M. Smith, NOAA, NOAA/NOS  
Coast Survey Development Laboratory, USA 19

**JALBTCX Coastal Mapping for the USACE**

By Jennifer M. Wozencraft and W. Jeff Lillycrop 28

**Analysis of NOAA-Generated Tropospheric Refraction Corrections for the Next Generation Nationwide****DGPS Service**

David Dodd, The University of Southern Mississippi and Sunil Bisnath,  
Harvard-Smithsonian Center for Astrophysics 38

## ■ Note

**The Role of Hydrographic Services with Regard to Geospatial Data and Planning Infrastructure****The role of IHO and the view of IHB**

By Vice Admiral Alexandros Maratos, President of the IHB,  
presented at the seminar organised by IHO and BSH in Rostock, November 2005 51

## ■ Instructions for Contributors

55

## The International Hydrographic Review

Publishing Company : Reed Business Information bv  
Publication Director : Durk Haarsma  
Editor-in-Chief : Adam J. Kerr  
Editorial Board : Lee Alexander  
: Michael Casey  
: Captain Hugo Gorziglia (International Hydrographic Organisation)  
: Horst Hecht  
: Sean Hinds  
: Robert Ward  
Editorial Manager : Joost Boers (joost.boers@reedbusiness.nl)  
Account Manager : Wilmiene Bakker (wilmiene.bakker@reedbusiness.nl)  
Circulation Manager : Marjan de Vries (marjan.de.vries@reedbusiness.nl)

### Instructions for Contributors

The International Hydrographic Review is an international journal published three times a year by RBI bv. It is sponsored by the International Hydrographic Organisation. It contains original papers concerning all aspects of hydrography and associated subjects. All articles are subjected to peer review and are expected to be 4,000 to 6,000 words long, although longer articles may be considered. It also provides a medium for discussions in the form of shorter Notes, that are typically 1,500 to 2,000 words in length.

Information on the layout of articles and the form of illustrations and references may be obtained by requesting 'Instructions to Authors' from the Editor. They are also published in the first issue of each year. Submissions should be send to:

Mr Adam Kerr  
Flagstaff Cottage  
Lamorna  
Penzance  
Cornwall TR19 6XQ  
UNITED KINGDOM  
Tel.: +44 (0)1736 - 731 228  
Fax.: +44 (0)1736 - 731 976  
E-mail: Adam.J.Kerr@btopenworld.com

#### Reprints

Reprints of all articles (including articles published in earlier issues) can be ordered. For more information, please contact Marianne de Boer: marianne.de.boer@reedbusiness.nl.

#### Copyright

Any permission needed to incorporate material published elsewhere is the responsibility of the authors and it will be assumed that such permission has been maintained. The publisher is not responsible for statements made in the articles or advertisements nor is responsible for typing or converting errors. No material may be reproduced in whole or in part without written permission of RBI bv.

#### Subscription Information

The Journal is published three times a year by RBI bv and can be obtained regularly by subscription. Please find below the subscription rates:

	Europe	All other countries
1 year Individual	€ 67.00	US\$ 93.00
1 year Library	€ 85.00	US\$108.00

Should you wish to take out a subscription then please contact our circulation manager.