

The International Hydrographic Review

Vol. 4 No. 1 (New Series)

APRIL 2003



SPONSORED BY THE INTERNATIONAL HYDROGRAPHIC ORGANISATION

a **GTC** publication

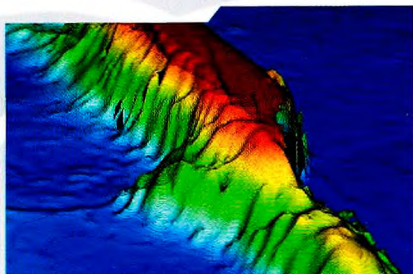


KONGSBERG

How deep do you want to go?

Kongsberg Simrad offers a complete range of multibeam echo sounders

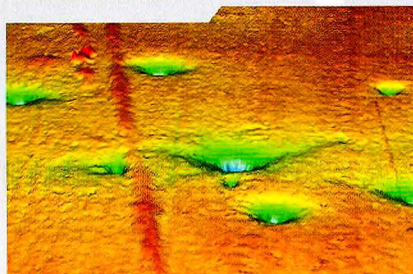
All instruments are characterized by high mapping productivity in combination with exceptionally high sounding accuracy, and a dense pattern of soundings to cover the seafloor in order to reveal all details on the bottom.



Courtesy of Halliburton Subsea

Shallow water EM 3002/EM 3000 /EM 2000

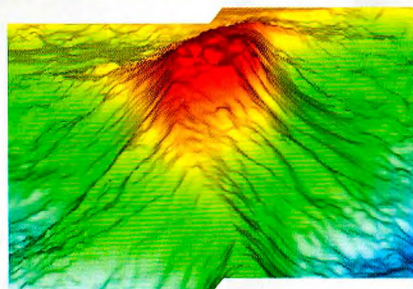
These high resolution multibeam echo sounders are compact systems with robust sonar heads. Choose between portable or permanent mounting on any survey vessel, including ROV/AUVs and towed vehicles.



Courtesy of Fugro Geoteam AS

Medium water EM 1002

This short to medium range, high resolution multibeam echo sounder provides swath coverage up to 1500 meters and may be supplied with an optional hull unit.



Deep water EM 300/EM 120

These high performance multibeam echo sounders for deep water mapping are the only systems with beam stabilization for both heave, roll, pitch and yaw movements. Our SBP 120, sub-bottom profiler may be integrated.

Kongsberg Simrad offers free installation advice and world wide support.

www.kongsberg-simrad.com

Kongsberg Simrad AS

Telephone: +47 33 02 38 00
E-mail: horten.sales@kongsberg-simrad.com

WORLD CLASS - through people, technology and dedication

Vol. 4 No. 1 (New Series)

April 2003

THE INTERNATIONAL HYDROGRAPHIC REVIEW

SPONSORED BY THE INTERNATIONAL HYDROGRAPHIC ORGANISATION

Published by:

GITC bv, P.O. Box 112, 8530 AC Lemmer, The Netherlands

Tel.: +31 (514) 56 18 54, Fax: +31 (514) 56 38 98

E-mail: mailbox@gitc.nl, Web-site: www.gitc.nl

Contents

■ Editorial	5
<hr/>	
Adam J. Kerr	
■ Articles	
<hr/>	
Dynamic Motion Residuals in Swatch Sonar Data: Ironing out the Creases	
By John E. Hughes Clarke, University of New Brunswick, Canada	6
The Geodetic Properties of the Equidistance Line	
By David H. Gray, Canadian Hydrographic Service, Ottawa, Canada	24
Analysis of Data Relevant to Establishing Outer Limits of a Continental Shelf under Law of the Sea Article 76	
By Martin Jakobsson, Larry Mayer and Andrew Armstrong, University of New Hampshire, USA	36
Automatic Statistical Processing of Multibeam Echosounder Data	
By Brian Calder, University of New Hampshire, United Kingdom	53
Hydrography: Its Present State and Future Development	
By Z. Kopacz, W. Morgas and J. Urbanski, Naval University of Gdynia, Poland	69
■ Notes	
<hr/>	
Loch Ness Survey 2002	
By Peter Bennett, Kongsberg Simrad, United Kingdom	77
Co-tidal Reductions in Digital Hydrographic Survey	
By Lieutenant Commander AK Jolly, National Hydrographic Office, India	82
International Technical Assistance and Co-operation - Fifteen Years of Joint FIG/IHO Work in TACC - a Survey	
By Dr. Wilfried Schleider, Federal Republic of Germany	87
■ Letter to the Editor	
	91
■ Book Review	
	92
■ Obituary	
	94
■ Instructions for Contributors	
	96

The International Hydrographic Review

Publishing Company :GITC bv
 President :Ing. Johan Boesjes
 Publication Director :Drs. Ing. Floris Siteur
 Editor-in-Chief :Adam J. Kerr
 Editorial Board :Michael Casey
 :Captain Hugo Gorziglia (International Hydrographic Organisation)
 :Horst Hecht
 :Robert Ward
 Editorial Manager :Nynke van den Berg
 Account Manager :Johannes van der Schaar
 Circulation Manager :Jeroen Zaagemans

Instructions for Contributors

The International Hydrographic Review is an international journal published three times a year by GITC bv. It is sponsored by the International Hydrographic Organisation. It contains original papers concerning all aspects of hydrography and associated subjects. All articles are subjected to peer review and are expected to be 4,000 to 6,000 words long, although longer articles may be considered. It also provides a medium for discussions in the form of shorter Notes, that are typically 1,500 to 2,000 words in length.

Information on the layout of articles and the form of illustrations and references may be obtained by requesting 'Instructions to Authors' from the Editor. They are also published in the first issue of each year. Submissions should be send to:

Mr. Adam Kerr	or	Nynke van den Berg
Flagstaff Cottage		GITC bv
Lamorna		P.O. Box 112
Penzance		8530 AC Lemmer
Cornwall TR19 6XQ		THE NETHERLANDS
UNITED KINGDOM		Tel.: +31 (514) 56 18 54
Tel.: +44 (0)1736 - 731 228		Fax: +31 (514) 56 38 98
Fax.: +44 (0)1736 - 731 976		E-mail: nynke.vandenberg@gitc.nl
E-mail: Adam.J.Kerr@btopenworld.com		

Information on the Layout of Articles and the form of illustrations and references may be obtained by requesting 'Instructions for Authors'. These are published in the first issue of each year and may be obtained by contacting the Editor.

Reprints

Reprints of all articles (including articles published in earlier issues) can be ordered. For more information, please contact Nynke van den Berg at GITC.

Copyright

Any permission needed to incorporate material published elsewhere is the responsibility of the authors and it will be assumed that such permission has been maintained. The publisher is not responsible for statements made in the articles or advertisements nor is responsible for typing or converting errors.

No material may be reproduced in whole or in part without written permission of GITC bv.

Subscription Information

The Journal is published three times a year by GITC bv and can be obtained regularly by subscription. Please find below the subscription rates:

	Europe	All other countries
1 year Individual	€ 61.00	US\$ 84.00
1 year Library	€ 78.00	US\$ 99.00

Should you wish to take out a subscription then please contact our Circulation Manager (jeroen.zaagemans@gitc.nl).