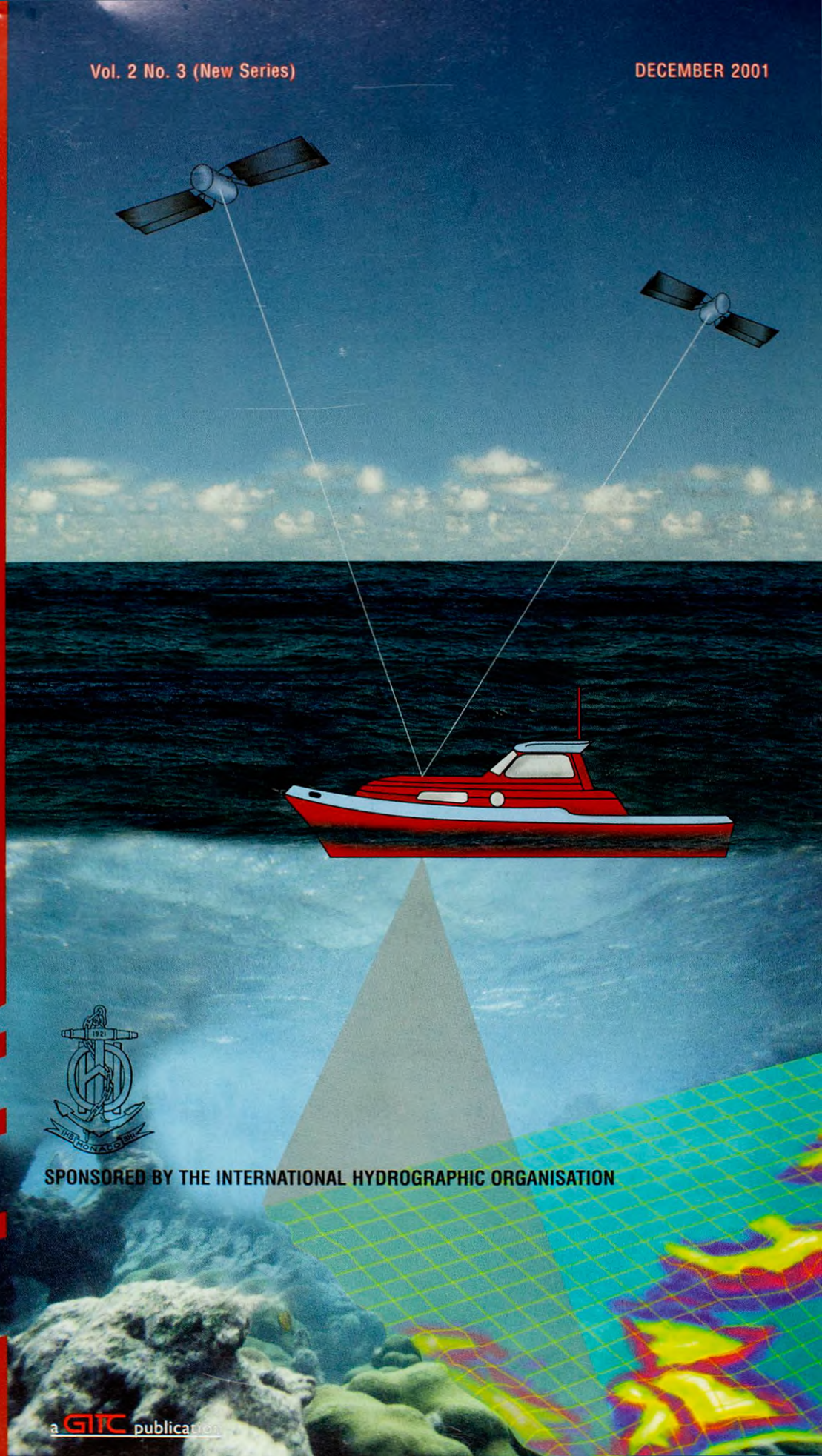


The International Hydrographic Review

Vol. 2 No. 3 (New Series)

DECEMBER 2001



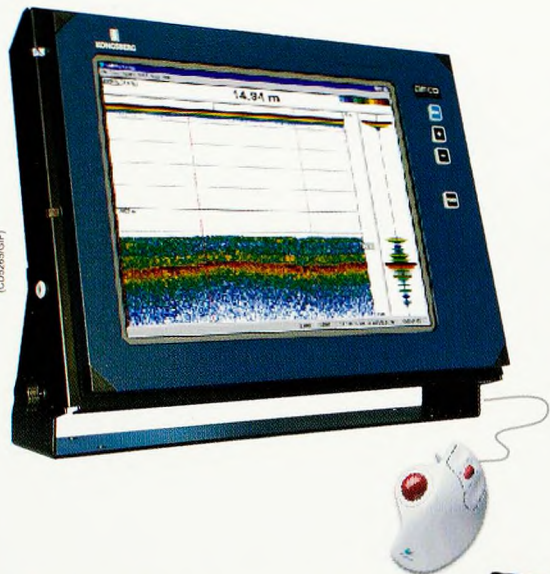
SPONSORED BY THE INTERNATIONAL HYDROGRAPHIC ORGANISATION



KONGSBERG

EA 600

New Generation Hydrographic Single-beam Echo Sounder



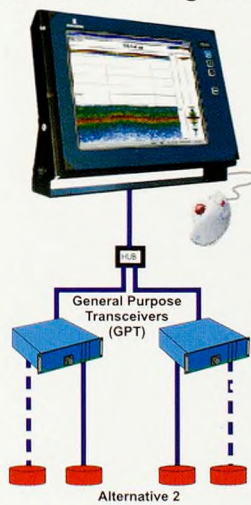
- Flexible configuration saves installation costs on new-build or retrofit
- Quick & easy Microsoft Windows user interface
- Local storage on HDD
- Export of data to writable CD or Ethernet
- Up to four frequencies simultaneously - controlled independently

- 15 or 18 inch color LCD display (19 inch rack or table mounted)
- Sound Velocity Profile compensation, profile editor included
- Passive pinger tracking mode (12 kHz)
- Continuous measurement of alongtrack slope angle
- 12 kHz to 710 kHz frequency range

EA 600 Alternative Configurations



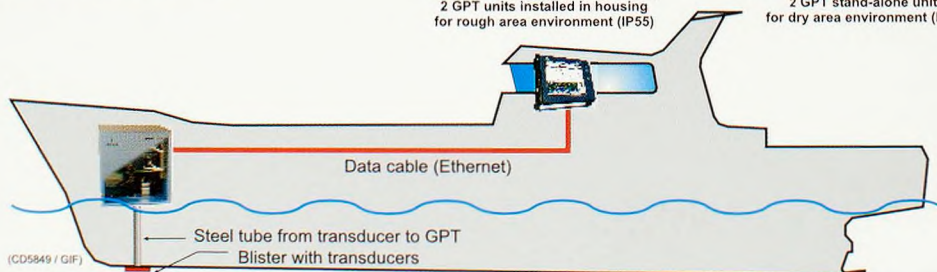
Colour LCD display with built-in CPU, 2 GPT units installed in housing for rough area environment (IP55)



Colour LCD display with built-in CPU, 2 GPT stand-alone units for dry area environment (IP40)



EA600 for 19" rack mount: Colour LCD display with built-CPU & 2 GPTs



(CD5849 / GIF)

KONGSBERG SIMRAD

Norway
Tel.: 47 33 02 38 00
Fax: 47 33 04 47 53

USA
Tel.: 1 713 934 8885
Fax: 1 713 934 8886

Dartmouth, Nova Scotia
Tel.: 1 902 468 2268
Fax: 1 902 468 2217

WEB:
www.kongsberg-simrad.com

UK
Tel.: 44 1 224 226 500
Fax: 44 1 224 226 501

Singapore
Tel.: 65 899 5800
Fax: 65 899 1225

Italy
Tel.: 39 6 65 57 579
Fax: 39 6 65 57 859

EMAIL:
horten.sales@kongsberg-simrad.com

Vol. 2 No. 3 (New Series)

December 2001

THE INTERNATIONAL HYDROGRAPHIC REVIEW

SPONSORED BY THE INTERNATIONAL HYDROGRAPHIC ORGANISATION

Published by:

GITC bv, Nieuwedijk 43, 8531 HK Lemmer

Tel.: 0514-561854, Fax: 0514-563898

E-mail: mailbox@gitc.nl, Website: www.gitc.nl

Contents

■ Editorial	5
Adam J. Kerr	
■ Articles	
Matthew Flinder's Great Voyage	6
G.S. Ritchie, United Kingdom	
Maritime Boundaries in the North Sea: a Review	17
Ina Elema, Hydrographic Service, RNLN, The Netherlands Kees de Jong, Delft University of Technology, The Netherlands	
Chilean Hydrographic Surveyors' Contribution to Coastal Zone Management	31
Captain Hugo Gorziglia, Chilean Navy Hydrographic Engineer, Advisor at SHOA for International Affairs	
Harmonising Chart and Navigation Information on ECDIS	39
Lee Alexander, Centre for Coastal and Ocean Mapping, University of New Hampshire	
A Proposed International Long-term Project to Systematically Map the World's Ocean Floors from Beach to Trench: GOMaP (Global Ocean Mapping Program)	49
Michael J. Carron, Chief Scientist, Naval Oceanographic Office, Stennis Space Center, USA Peter R. Vogt and Woo-Yeol Jung, Marine Geosciences Division, Naval Research Laboratory, USA	
Challenges and Opportunities for Hydrography in The New Century	56
David Monahan, Canadian Hydrographic Service, Canada Horst Hecht, Federal Maritime and Hydrographic Agency (BSH), Germany Dave Wells, Ocean Mapping Group, Department of Geodesy and Geomatics Engineering University of New Brunswick, Canada Maureen R. Kenny, Captain, NOAA, Center for Operational Oceanographic Products and Services, National Oceanic and Atmospheric Administration, USA Aldino Campos, Portuguese Hydrographic Institute, Portugal	
Review of Recent Significant Technologies and Initiatives Implemented to Enhance Navigational Safety and Protect the Marine Environment in the Straits of Singapore and Malacca	68
By Parry Oei, MPA, Singapore	
The Influence of Carrier's Attitude and the Position Reduction in Multibeam Echosounding and Airborne Laser Depth Sounding	77
Huang Motao, Tianjin Institute of Hydrographic Surveying and Charting Zhai Guojun, Ouyang Yongzhong, Liu Yanchun, Lu Xiuping and Wang Rui	
■ Notes	
Accreditation of The Hydrographic Surveying Course at UCL and The PLA	89
J. C. Iliffe, Department of Geomatic Engineering, University College, London A. J. Greenland, Hydrographic Service, Port of London Authority, London	
The IHO ECDIS Colours & Symbols	92
Mike Eaton, ex-chairman IHO Colours & Symbols W.G.	
■ Book Reviews	
Galileo's Daughter	101
By Dava Sobel, Walker & Co. USA	
The Makers of Blueback Charts	103
<i>A History of Imray Laurie Norie and Wilson Ltd.</i> By Susanna Fisher, Imray Laurie Norie & Wilson, St. Ives	
■ Obituary	
Dr. A. Raymond Boyle	104

The International Hydrographic Review

Publishing Company :GITC bv
 President :Ing. Johan Boesjes
 Publication Director :Drs. Ing. Floris Siteur
 Editor-in-Chief :Adam J. Kerr
 Editorial Board :Michael Casey
 :Joe Doyle
 :Horst Hecht
 :Rear Admiral Giuseppe Angrisano (International Hydrographic Organisation)
 Editorial Manager :Nynke van den Berg
 Account Manager :Wilmiene Bakker

Instructions for Contributors

The International Hydrographic Review is an international journal publishing original works on all aspects of hydrography and associated subjects, ranging from the latest technical developments to history. It also provides a medium for discussions in the form of shorter articles and notes. Submissions should be sent to:

Mr. Adam Kerr
 Flagstaff Cottage
 Lamorna
 Penzance
 Cornwall TR19 6XQ
 UNITED KINGDOM
 Tel./Fax.: +44 (0)1736 - 731 976
 E-mail: kerr@cwcom.net

or
 Nynke van den Berg
 GITC bv
 Box 112
 8530 AC Lemmer
 THE NETHERLANDS
 Tel.: +31 (0)514 - 56 18 54
 Fax: +31 (0)514 - 56 38 98
 E-mail: nynke.vandenberg@gitc.nl

Submissions should be either as attached e-mail files or as two hard copies.

ARTICLES should be 4,000-6,000 words long, although longer articles may be considered. Authors are responsible for ensuring that all manuscripts are typed accurately before final submission. Contributions are normally received with the understanding that they comprise original, unpublished material and are not being submitted for publication elsewhere. Most articles will be refereed to ensure both accuracy and relevance and amendments to the script may be required before final acceptance. On acceptance, contributions are subject to editorial amendment. When time permits, authors will receive a copy of the final article before publication.

NOTES of approximately 1,500-2,000 words may be accepted if the subject does not lend itself to a full article. These will not be refereed but will be subject to editorial comment and amendments.

MEETING REPORTS. When appropriate, the Review may contain reports of relevant meetings.

BOOK REVIEWS are welcome. These should normally be approximately 1,000 words in length.

LETTERS TO THE EDITOR are welcome.

Layout of Articles

- Short title (up to 40 characters including spaces), subtitle (if desired), author(s) name(s) and affiliation(s)
- Abstract of approximately 100 words, outlining in a single paragraph the aims, scope and conclusions of the paper
- Main body of text, with sub-titles to emphasise changes of topic. Ideally in blocks of approximately 500 words
- References
- Appendices as required
- Illustrations in original form with captions, provided separately from the text. The use of coloured illustrations should be discussed prior to submission of the articles

References

Bibliographical references should be listed at the end of the articles in the standard Harvard form. Footnotes should be kept to a minimum and the metric system used throughout.

Delivery of Material

Typescript: Deliver the manuscript on disc or by e-mail, preferably on Microsoft Word or RTF. Send an identical hard copy by mail or fax.

Illustrations: We prefer to receive hard copy illustrations (e.g. photographs, slides or negatives). If you decide to deliver digital illustration material, please note that the minimum resolution of the illustrations should be 367 dpi at reproduction size and conform to one of the following formats: TIFF, JPEG, BMP, GIF or TIF.

Reprints

Reprints of all articles (including articles published in earlier issues) can be ordered. For more information, please contact Nynke van den Berg at GITC.

Copyright

Any permission needed to incorporate material published elsewhere is the responsibility of the authors and it will be assumed that such permission has been maintained.

The publisher is not responsible for statements made in the articles or advertisements nor is responsible for typing or converting errors.

No material may be reproduced in whole or in part without written permission of GITC bv

Subscription Information

The Journal is published twice a year by GITC bv. Subscription rates are available upon request from the publisher. The Journal can be ordered only by subscription. Subscription orders should be sent to the publisher.