

The International Hydrographic Review

Vol. 2 No. 2 (New Series)

SEPTEMBER 2001



SPONSORED BY THE INTERNATIONAL HYDROGRAPHIC ORGANISATION

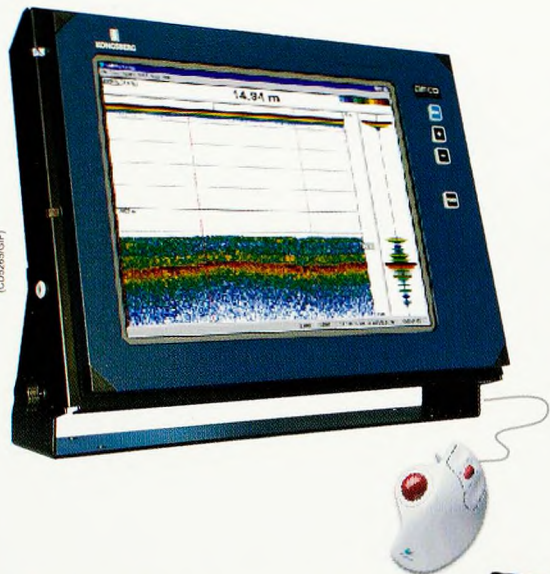
a **GIC** publication



KONGSBERG

EA 600

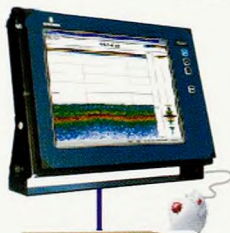
New Generation Hydrographic Single-beam Echo Sounder



- Flexible configuration saves installation costs on new-build or retrofit
- Quick & easy Microsoft Windows user interface
- Local storage on HDD
- Export of data to writable CD or Ethernet
- Up to four frequencies simultaneously - controlled independently

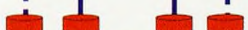
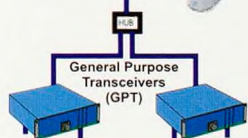
- 15 or 18 inch color LCD display (19 inch rack or table mounted)
- Sound Velocity Profile compensation, profile editor included
- Passive pinger tracking mode (12 kHz)
- Continuous measurement of alongtrack slope angle
- 12 kHz to 710 kHz frequency range

EA 600 Alternative Configurations



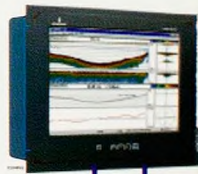
Alternative 1

Colour LCD display with built-in CPU, 2 GPT units installed in housing for rough area environment (IP55)



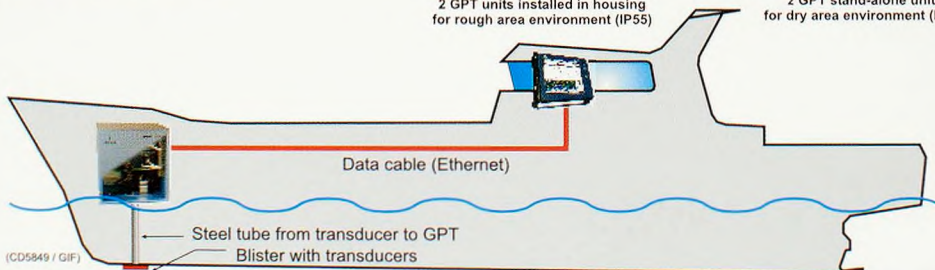
Alternative 2

Colour LCD display with built-in CPU, 2 GPT stand-alone units for dry area environment (IP40)



Alternative 3

EA600 for 19" rack mount: Colour LCD display with built-CPU & 2 GPTs



(CD5849 / GIF)

KONGSBERG SIMRAD

Norway
Tel.: 47 33 02 38 00
Fax: 47 33 04 47 53

USA
Tel.: 1 713 934 8885
Fax: 1 713 934 8886

Dartmouth, Nova Scotia
Tel.: 1 902 468 2268
Fax: 1 902 468 2217

WEB:
www.kongsberg-simrad.com

UK
Tel.: 44 1 224 226 500
Fax: 44 1 224 226 501

Singapore
Tel.: 65 899 5800
Fax: 65 899 1225

Italy
Tel.: 39 6 65 57 579
Fax: 39 6 65 57 859

EMAIL:
horten.sales@kongsberg-simrad.com

Vol. 2 No. 2 (New Series)

September 2001

THE INTERNATIONAL HYDROGRAPHIC REVIEW

SPONSORED BY THE INTERNATIONAL HYDROGRAPHIC ORGANISATION

Published by:

GITC bv, Nieuwedijk 43, 8531 HK Lemmer

Tel.: 0514-561854, Fax: 0514-563898

E-mail: mailbox@gitc.nl, Website: www.gitc.nl

CONTENTS

■ Introduction	5
Adam J. Kerr	
■ Articles	
Bay of Somme: Magnetic Survey and Obstructions Detection	6
Marie-Françoise Lalancette and Michel Crouzat, SHOM, France	
Use of a Robust Estimator for Automatic Detection of Isolated Errors Appearing in the Bathymetry Data	32
Nathalie Debese, SHOM, France	
Evaluation of the Multi-site Differential GPS System Multifix Onboard the Hydrographic Vessel L'esperance	45
Jean-Michel Leculier, Service Hydrographique et Océanographique de la Marine, France	
Tidal Streams along Brittany Northern Coast, France	54
Lucia Pineau, ATLANTIDE (formally at Hocer), France	
Chartlet Compilation and Maintenance of Digital Charts by the Electronic Navigational Chart System	66
Kenichiro Ishihara and Hidetoshi Ueda, Japan Coast Guard	
Hydrographic Survey Using SEABAT	70
Hirokazu Mori, Tadashi Yamamoto and Isao Tedokon, Hydrographic Department, Japan Coast Guard	
Chromatic Consideration on the Colour of Nautical Charts	77
Nobuyuki Shibayama and Ken'ichi Yamaya, Coastal Information Management Office, JHD, Japan and Shin Tani and Jun'ichi Namba, Chart Maintenance Office, JHD, Japan	
Search and Identification of a Sunken Ship Using a Multibeam Sounding System for Shallow Water – SEABAT	85
Minoru Tozawa, Coastal Survey and Cartography Division, Hydrographic Department, Japan Coast Guard	
Application of Vertical GPS Positioning on Shipboard	89
Akio Uchida, Ocean Research Laboratory, Hydrographic Department, Japan Coast Guard, Tokyo, Japan	

The International Hydrographic Review

Publishing Company :GITC bv
President :Ing. Johan Boesjes
Publication Director :Drs. Ing. Floris Siteur
Editor-in-Chief :Adam J. Kerr
Editorial Board :Michael Casey
 :Joe Doyle
 :Horst Hecht
 :Rear Admiral Giuseppe Angrisano (International Hydrographic Organisation)
Editorial Manager :Nynke van den Berg
Account Manager :Wilmiene Bakker

Instructions for Contributors

The International Hydrographic Review is an international journal publishing original works on all aspects of hydrography and associated subjects, ranging from the latest technical developments to history. It also provides a medium for discussions in the form of shorter articles and notes. Submissions should be sent to:

Mr. Adam Kerr
Flagstaff Cottage
Lamorna
Penzance
Cornwall TR19 6XQ
UNITED KINGDOM
Tel./Fax.: +44 (0)1736 - 731 976
E-mail: kerr@cwcom.net

or
Nynke van den Berg
GITC bv
Box 112
8530 AC Lemmer
THE NETHERLANDS
Tel.: +31 (0)514 - 56 18 54
Fax: +31 (0)514 - 56 38 98
E-mail: nynke.vandenbergt@gitc.nl

Submissions should be either as attached e-mail files or as two hard copies.

ARTICLES should be 4,000-6,000 words long, although longer articles may be considered. Authors are responsible for ensuring that all manuscripts are typed accurately before final submission. Contributions are normally received with the understanding that they comprise original, unpublished material and are not being submitted for publication elsewhere. Most articles will be refereed to ensure both accuracy and relevance and amendments to the script may be required before final acceptance. On acceptance, contributions are subject to editorial amendment. When time permits, authors will receive a copy of the final article before publication.

NOTES of approximately 1,500-2,000 words may be accepted if the subject does not lend itself to a full article. These will not be refereed but will be subject to editorial comment and amendments.

MEETING REPORTS. When appropriate, the Review may contain reports of relevant meetings.

BOOK REVIEWS are welcome. These should normally be approximately 1,000 words in length.

LETTERS TO THE EDITOR are welcome.

Layout of Articles

- Short title (up to 40 characters including spaces), subtitle (if desired), author(s) name(s) and affiliation(s)
- Abstract of approximately 100 words, outlining in a single paragraph the aims, scope and conclusions of the paper
- Main body of text, with sub-titles to emphasise changes of topic. Ideally in blocks of approximately 500 words
- References
- Appendices as required
- Illustrations in original form with captions, provided separately from the text. The use of coloured illustrations should be discussed prior to submission of the articles

References

Bibliographical references should be listed at the end of the articles in the standard Harvard form. Footnotes should be kept to a minimum and the metric system used throughout.

Delivery of Material

Typescript: Deliver the manuscript on disc or by e-mail, preferably on Microsoft Word or RTF. Send an identical hard copy by mail or fax.

Illustrations: We prefer to receive hard copy illustrations (e.g. photographs, slides or negatives). If you decide to deliver digital illustration material, please note that the minimum resolution of the illustrations should be 367 dpi at reproduction size and conform to one of the following formats: TIFF, JPEG, BMP, GIF or TIF.

Reprints

Reprints of all articles (including articles published in earlier issues) can be ordered. For more information, please contact Nynke van den Berg at GITC.

Copyright

Any permission needed to incorporate material published elsewhere is the responsibility of the authors and it will be assumed that such permission has been maintained.

The publisher is not responsible for statements made in the articles or advertisements nor is responsible for typing or converting errors.

No material may be reproduced in whole or in part without written permission of GITC bv

Subscription Information

The Journal is published twice a year by GITC bv. Subscription rates are available upon request from the publisher. The Journal can be ordered only by subscription. Subscription orders should be sent to the publisher.