

THE INTERNATIONAL HYDROGRAPHIC REVIEW

Vol. 2 No. 1 (New Series)

JUNE 2001



SPONSORED BY THE INTERNATIONAL HYDROGRAPHIC ORGANISATION

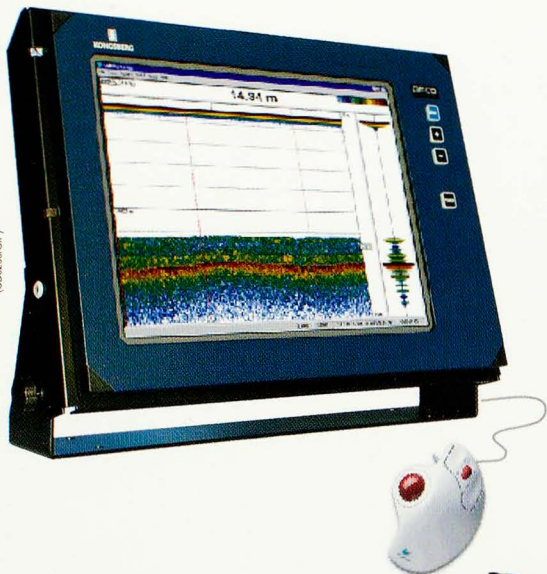
a **GTC** publication



KONGSBERG

EA 600

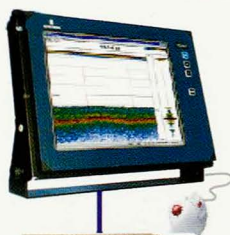
New Generation Hydrographic Single-beam Echo Sounder



- Flexible configuration saves installation costs on new-build or retrofit
- Quick & easy Microsoft Windows user interface
- Local storage on HDD
- Export of data to writable CD or Ethernet
- Up to four frequencies simultaneously - controlled independently

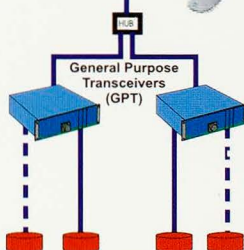
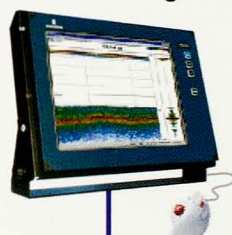
- 15 or 18 inch color LCD display (19 inch rack or table mounted)
- Sound Velocity Profile compensation, profile editor included
- Passive pinger tracking mode (12 kHz)
- Continuous measurement of alongtrack slope angle
- 12 kHz to 710 kHz frequency range

EA 600 Alternative Configurations



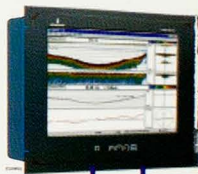
Alternative 1

Colour LCD display with built-in CPU, 2 GPT units installed in housing for rough area environment (IP55)



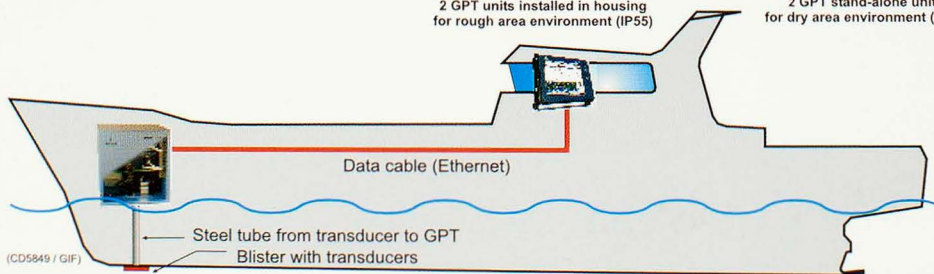
Alternative 2

Colour LCD display with built-in CPU, 2 GPT stand-alone units for dry area environment (IP40)



Alternative 3

EA600 for 19" rack mount: Colour LCD display with built-CPU & 2 GPTs



(CD5849 / GIF)

KONGSBERG SIMRAD

Norway
Tel.: 47 33 02 38 00
Fax: 47 33 04 47 53

USA
Tel.: 1 713 934 8885
Fax: 1 713 934 8886

Dartmouth, Nova Scotia
Tel.: 1 902 468 2268
Fax: 1 902 468 2217

WEB:
www.kongsberg-simrad.com

UK
Tel.: 44 1 224 226 500
Fax: 44 1 224 226 501

Singapore
Tel.: 65 899 5800
Fax: 65 899 1225

Italy
Tel.: 39 6 65 57 579
Fax: 39 6 65 57 859

EMAIL:
horten.sales@kongsberg-simrad.com

Vol. 2 No. 1 (New Series)

June 2001

THE INTERNATIONAL HYDROGRAPHIC REVIEW

SPONSORED BY THE INTERNATIONAL HYDROGRAPHIC ORGANISATION

Published by:
GITC bv, Nieuwedijk 43, 8531 HK Lemmer
Tel.: 0514-561854, Fax: 0514-563898
E-mail: mailbox@gitc.nl, Website: www.gitc.nl

CONTENTS

■ Editorial	5
Adam J. Kerr	
■ Articles	
Matthew Flinders: Pathway to Fame	6
Joe Doyle	
Implementation of WGS84 and GPS for Marine Navigation	19
Terry Moore, Vidal Ashkenazi and Mark Dumville	
A Standardised Algorithm of the Determination of Position Errors by the Example of GPS with and without 'Selective Availability'	29
Ingo Harre	
On the Relative Effects of Using Sector or Median Lines for Partitioning the Juridical Continental Shelf beyond 2000 Nautical Miles in the Arctic Ocean	37
Paul Neto and Rob van de Poll	
Setting Nautical Charting Priorities	45
<i>A Regional Approach for Managing Limited Resources</i>	
Steve Barnum	
Impact of Radar Integration with Electronic Charting	53
Helmut H. Lanziner	
Hydrographic Surveying without a Tide Gauge	68
Reha Metin Alkan	
■ Notes	
A Note on Emerging Hydrographic Technology & Applications	80
Michael J. Casey	
ECDIS Regulations in the Real World	88
Joost van Aalst	
The Leeuwin Class Hydrographic Ships	90
<i>Enhancing the Royal Australian Navy's Knowledge of Its Operating Environment</i>	
Bruce Kafer	
ECDIS Type-Approval - A Brief Primer	96
Lee Alexander	
■ Book Reviews	
Continental Shelf Limits: The Scientific and Legal Interface	98
P.J. Book and C.M. Carleton	
To Go upon Discovery	101
The review has been prepared by Tony O'Connor	
Secrets & Lies: Digital Security in a Networked World	103
Bruce Schneier	

The International Hydrographic Review

Publishing Company :GITC bv
 President :Ing. Johan Boesjes
 Publication Director :Drs. Ing. Floris Siteur
 Editor-in-Chief :Adam J. Kerr
 Editorial Board :Michael Casey
 :Joe Doyle
 :Horst Hecht
 :Rear Admiral Giuseppe Angrisano (International Hydrographic Organisation)
 Editorial Manager :Nynke van den Berg
 Account Manager :Wilmiene Bakker

Instructions for Contributors

The International Hydrographic Review is an international journal publishing original works on all aspects of hydrography and associated subjects, ranging from the latest technical developments to history. It also provides a medium for discussions in the form of shorter articles and notes. Submissions should be sent to:

Mr. Adam Kerr
 Flagstaff Cottage
 Lamorna
 Penzance
 Cornwall TR19 6XQ
 UNITED KINGDOM
 Tel./Fax.: +44 (0)1736 - 731 976
 E-mail: kerr@cwcom.net

or
 Nynke van den Berg
 GITC bv
 Box 112
 8530 AC Lemmer
 THE NETHERLANDS
 Tel.: +31 (0)514 - 56 18 54
 Fax: +31 (0)514 - 56 38 98
 E-mail: nynke.vandenberg@gitc.nl

Submissions should be either as attached e-mail files or as two hard copies.

ARTICLES should be 4,000-6,000 words long, although longer articles may be considered. Authors are responsible for ensuring that all manuscripts are typed accurately before final submission. Contributions are normally received with the understanding that they comprise original, unpublished material and are not being submitted for publication elsewhere. Most articles will be refereed to ensure both accuracy and relevance and amendments to the script may be required before final acceptance. On acceptance, contributions are subject to editorial amendment. When time permits, authors will receive a copy of the final article before publication.

NOTES of approximately 1,500-2,000 words may be accepted if the subject does not lend itself to a full article. These will not be refereed but will be subject to editorial comment and amendments.

MEETING REPORTS. When appropriate, the Review may contain reports of relevant meetings.

BOOK REVIEWS are welcome. These should normally be approximately 1,000 words in length.

LETTERS TO THE EDITOR are welcome.

Layout of Articles

- Short title (up to 40 characters including spaces), subtitle (if desired), author(s) name(s) and affiliation(s)
- Abstract of approximately 100 words, outlining in a single paragraph the aims, scope and conclusions of the paper
- Main body of text, with sub-titles to emphasise changes of topic. Ideally in blocks of approximately 500 words
- References
- Appendices as required
- Illustrations in original form with captions, provided separately from the text. The use of coloured illustrations should be discussed prior to submission of the articles

References

Bibliographical references should be listed at the end of the articles in the standard Harvard form. Footnotes should be kept to a minimum and the metric system used throughout.

Delivery of Material

Typescript: Deliver the manuscript on disc or by e-mail, preferably on Microsoft Word or RTF. Send an identical hard copy by mail or fax.

Illustrations: We prefer to receive hard copy illustrations (e.g. photographs, slides or negatives). If you decide to deliver digital illustration material, please note that the minimum resolution of the illustrations should be 367 dpi at reproduction size and conform to one of the following formats: TIFF, JPEG, BMP, GIF or TIF.

Reprints

Reprints of all articles (including articles published in earlier issues) can be ordered. For more information, please contact Nynke van den Berg at GITC.

Copyright

Any permission needed to incorporate material published elsewhere is the responsibility of the authors and it will be assumed that such permission has been maintained.

The publisher is not responsible for statements made in the articles or advertisements nor is responsible for typing or converting errors.

No material may be reproduced in whole or in part without written permission of GITC bv

Subscription Information

The Journal is published twice a year by GITC bv. Subscription rates are available upon request from the publisher. The Journal can be ordered only by subscription. Subscription orders should be sent to the publisher.