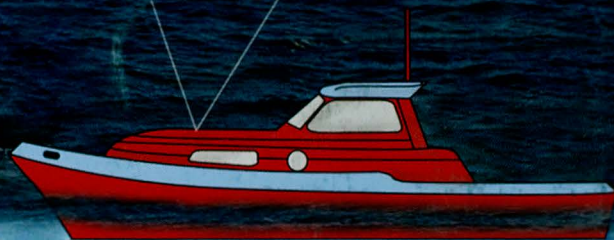


THE INTERNATIONAL HYDROGRAPHIC REVIEW

Vol. 1 No. 2 (New Series)

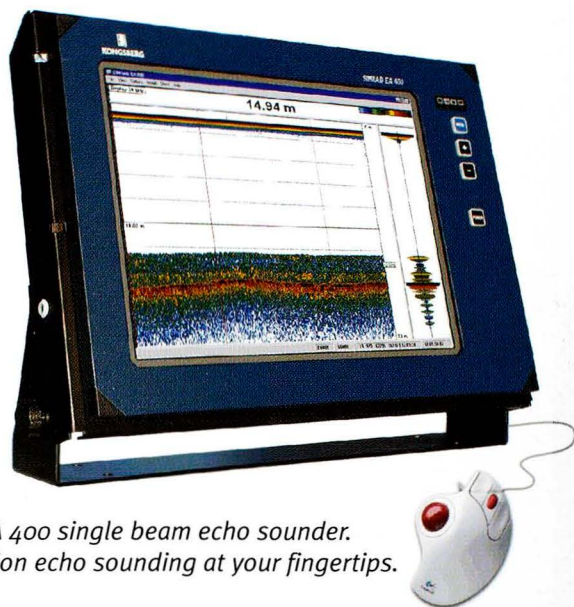
DECEMBER 2000



SPONSORED BY THE INTERNATIONAL HYDROGRAPHIC BUREAU

If...

- Ease of operation
- Ease of installation
- Windows NT
- Easily expandable
- Simultaneous multiple channel operation
- Individual screen presentation
- Ultra-high dynamic range
- Raw data storage
- Favourite memory settings



*The EA 400 single beam echo sounder.
Precision echo sounding at your fingertips.*

....are important features to you, please contact Kongsberg Simrad and we will introduce you to our single beam echo sounders.

E-mail horten.sales@kongsberg-simrad.com



KONGSBERG
SIMRAD

Kongsberg Simrad AS, PO Box 111, Strandpromenaden 50, N-3191 Horten, Norway Tel +47 33 03 4400 Fax +47 33 04 4753

for further information visit our website at www.kongsberg-simrad.com

Vol. 1 No. 2 (New Series)

December 2000

THE INTERNATIONAL HYDROGRAPHIC REVIEW

SPONSORED BY THE INTERNATIONAL HYDROGRAPHIC BUREAU

Published by:

GITC bv, Nieuwedijk 43, 8531 HK Lemmer

Tel.: 0514-561854, Fax: 0514-563898

E-mail: mailbox@gitc.nl, Website: www.gitc.nl

CONTENTS

Editorial	5
Adam J. Kerr	
Articles	
Further Light on James Cook's Survey of Newfoundland	6
Andrew David	
Electronic Navigational Charts from Survey Source Information - The Australian Experience	13
Mark Hudson	
Developing a Print on Demand Service in the Canadian Hydrographic Service	24
Paul N. Holroyd	
Ray-path Stability in Coastal Waters	30
Thomas J. Eisler	
ECDIS Type Approval According to International Standards	41
Mathias Jonas	
In-situ Underway Sound Velocity Profiling for Calibration of Multibeam Sounders Using a Moving Vessel Profiler (MVP)	47
Arnold Furlong and Mike Lamplugh	
The Implementation of the WEND Concept: The PRIMAR Experience	55
Philip Wainwright and David McPherson	
Approach for the Realisation of Sea Bottom Crustal Deformation Observations: Targets and Tactics in Waters around Japan	62
Tetsuichiro Yabuki, Yoshiharu Nagaya and Akira Asada	
Notes	
Hydrographic GIS	71
Horst Hecht	
Book Review	
The Tipping Point	77
Malcolm Gladwell	
Necrology: Commodore Folke Haalbjörner	80

The International Hydrographic Review

Publishing Company : GITC bv
President : Ing. Johan Boesjes
Publication Director : Drs. Ing. Floris Siteur
Editor-in-Chief : Adam J. Kerr
Editorial Board : Michael Casey
: Horst Hecht
: Commodore John W. Leech (International Hydrographic Bureau)
Editorial Manager : Jose Zijlstra
Account Manager : Wilmiene Bakker

Instructions for Contributors

The International Hydrographic Review is an international journal publishing original works on all aspects of hydrography and associated subjects, ranging from the latest technical developments to history. It also provides a medium for discussions in the form of shorter articles and notes. Submissions should be sent to:

Mr. Adam Kerr
Flagstaff Cottage
Lamorna P.O.
Penzance
Cornwall TR19 6XQ
UNITED KINGDOM
Tel./Fax.: +44 (0)1736 - 731 976
E-mail: kerr@cwcom.net

or
Jose Zijlstra
GITC bv
Box 112
8530 AC Lemmer
THE NETHERLANDS
Tel.: +31 (0)514 - 56 18 54
Fax: +31 (0)514 - 56 38 98
E-mail: jose.zijlstra@gitc.nl

Submissions should be either as attached e-mail files or as two hard copies.

ARTICLES should be 4,000-6,000 words long, although longer articles may be considered. Authors are responsible for ensuring that all manuscripts are typed accurately before final submission. Contributions are normally received with the understanding that they comprise original, unpublished material and are not being submitted for publication elsewhere. Most articles will be refereed to ensure both accuracy and relevance and amendments to the script may be required before final acceptance. On acceptance, contributions are subject to editorial amendment. When time permits, authors will receive a copy of the final article before publication.

NOTES of approximately 1,500-2,000 words may be accepted if the subject does not lend itself to a full article. These will not be refereed but will be subject to editorial comment and amendments.

MEETING REPORTS. When appropriate, the Review may contain reports of relevant meetings.

BOOK REVIEWS are welcome. These should normally be approximately 1,000 words in length.

LETTERS TO THE EDITOR are welcome.

Layout of Articles

- Short title (up to 40 characters including spaces), subtitle (if desired), author(s) name(s) and affiliation(s)
- Abstract of approximately 100 words, outlining in a single paragraph the aims, scope and conclusions of the paper
- Main body of text, with sub-titles to emphasise changes of topic. Ideally in blocks of approximately 500 words
- References
- Appendices as required
- Illustrations in original form with captions, provided separately from the text. The use of coloured illustrations should be discussed prior to submission of the articles

References

Bibliographical references should be listed at the end of the articles in the standard Harvard form. Footnotes should be kept to a minimum and the metric system used throughout.

Delivery of Material

Typescript: Deliver the manuscript on disc or by e-mail, preferably on Microsoft Word or RTF. Send an identical hard copy by mail or fax.

Illustrations: We prefer to receive hard copy illustrations (e.g. photographs, slides or negatives). If you decide to deliver digital illustration material, please note that the minimum resolution of the illustrations should be 367 dpi at reproduction size and conform to one of the following formats: TIFF, JPEG, BMP, GIF or TIF.

Reprints

Reprints of all articles (including articles published in earlier issues) can be ordered. For more information, please contact Jose Zijlstra at GITC.

Copyright

Any permission needed to incorporate material published elsewhere is the responsibility of the authors and it will be assumed that such permission has been maintained.

The publisher is not responsible for statements made in the articles or advertisements nor is responsible for typing or converting errors.

No material may be reproduced in whole or in part without written permission of GITC bv

Subscription Information

The Journal is published twice a year by GITC bv. Subscription rates are available upon request from the publisher. The Journal can be ordered only by subscription. Subscription orders should be sent to the publisher.