

The International Hydrographic Review

Vol. 3 No. 3 (New Series)

NOVEMBER 2002



SPONSORED BY THE INTERNATIONAL HYDROGRAPHIC ORGANISATION

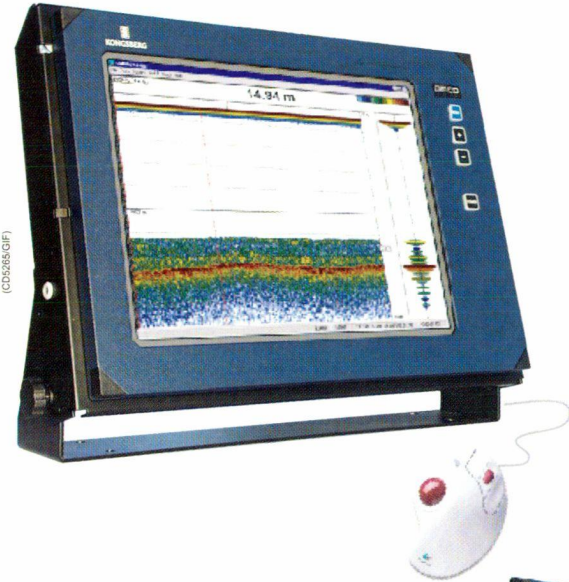
a **GITC** publication



KONGSBERG

EA 600

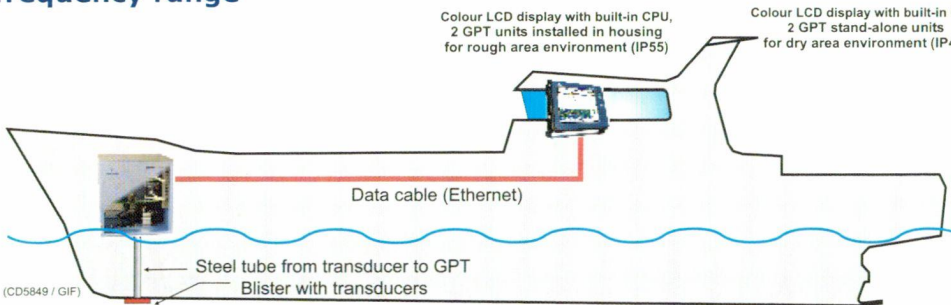
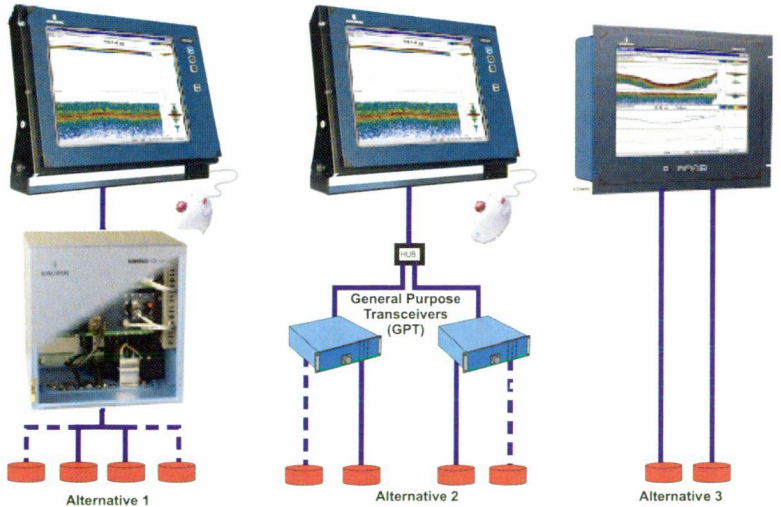
New Generation Hydrographic Single-beam Echo Sounder



- Flexible configuration saves installation costs on new-build or retrofit
- Quick & easy Microsoft Windows user interface
- Local storage on HDD
- Export of data to writable CD or Ethernet
- Up to four frequencies simultaneously - controlled independently

- 15 or 18 inch color LCD display (19 inch rack or table mounted)
- Sound Velocity Profile compensation, profile editor included
- Passive pinger tracking mode (12 kHz)
- Continuous measurement of alongtrack slope angle
- 12 kHz to 710 kHz frequency range

EA 600 Alternative Configurations



KONGSBERG SIMRAD

Norway
Tel.: 47 33 02 38 00
Fax: 47 33 04 47 53

USA
Tel.: 1 713 934 8885
Fax: 1 713 934 8886

Dartmouth, Nova Scotia
Tel.: 1 902 468 2268
Fax: 1 902 468 2217

WEB:
www.kongsberg-simrad.com

UK
Tel.: 44 1 224 226 500
Fax: 44 1 224 226 501

Singapore
Tel.: 65 899 5800
Fax: 65 899 1225

Italy
Tel.: 39 6 65 57 579
Fax: 39 6 65 57 859

EMAIL:
horten.sales@kongsberg-simrad.com

Vol. 3 No. 3 (New Series)

November 2002

THE INTERNATIONAL HYDROGRAPHIC REVIEW

SPONSORED BY THE INTERNATIONAL HYDROGRAPHIC ORGANISATION

Published by:

GITC bv, P.O. Box 112, 8530 AS Lemmer, The Netherlands

Tel.: +31 (514) 56 18 54, Fax: +31 (514) 56 38 98

E-mail: mailbox@gitc.nl, Web-site: www.gitc.nl

■ Editorial 5

Adam J. Kerr

■ Articles

Hydrographic Services at the CrossroadsBy Dr. Peter Ehlers, Federal Maritime and Hydrographic Agency (BSH), Germany 6**The Integration of Bathymetry, Topography and Shoreline and the Vertical Datum Transformations behind It**By Dr. Bruce Parker, National Ocean Service, NOAA, USA 14**A Comparison of Historical and Recent Sea Level Measurements at Port Arthur, Tasmania**By Dr. David Pugh, Southampton Oceanography Centre, United Kingdom and Dr. John Hunter, Richard Coleman and Chris Watson, University of Tasmania, Tasmania 27**Intelligent Chart Production System to Meet the Requirements of Modern Nautical Chart Production**By Tiina Tuurnala, Finnish Maritime Administration, Finland 47**Managing the Safe Operations of Shipping in the Great Barrier Reef and Torres Strait**By Neil Trainor, Australian Maritime Safety Authority and Jim Huggett, Maritime Division, Queensland Transport, Australia 54**Delivering Marine Geospatial Data on the Web****The Canadian Department of Fisheries and Oceans' GeoPortal**By Don Vachon, Canadian Hydrographic Service, Pierre Lafond, Holonics Data Management Group Ltd and Timothy V. Evangelatos, Terraqueous Technologies, Canada 63
■ Notes

Measured Gradients of the Sea Floor at Depths of 2,500m and Their Possible Influence on the Outer Limit of Juridical Continental ShelvesBy David Monahan, Canadian Hydrographic Service and Robert van de Poll, CARIS, Canada 72**Development of an IHO Data Protection Scheme**By Robert Sandvik, PRIMAR Stavanger, Norway 77

The International Hydrographic Review

Publishing Company : GITC bv
 President : Ing. Johan Boesjes
 Publication Director : Drs. Ing. Floris Siteur
 Editor-in-Chief : Adam J. Kerr
 Editorial Board : Michael Casey
 : Joe Doyle
 : Horst Hecht
 : Captain Hugo Gorziglia (International Hydrographic Organisation)
 Editorial Manager : Nynke van den Berg
 Account Manager : Johannes van der Schaar
 Circulation Manager : Jeroen Zaagemans

Instructions for Contributors

The International Hydrographic Review is an international journal publishing original works on all aspects of hydrography and associated subjects, ranging from the latest technical developments to history. It also provides a medium for discussions in the form of shorter articles and notes. Submissions should be sent to:

Mr. Adam Kerr
 Flagstaff Cottage
 Lamorna
 Penzance
 Cornwall TR19 6XQ
 UNITED KINGDOM
 Tel.: +44 (0)1736 - 731 228
 Fax.: +44 (0)1736 - 731 976
 E-mail: kerr@cwcom.net

or
 Nynke van den Berg
 GITC bv
 P.O. Box 112
 8530 AC Lemmer
 THE NETHERLANDS
 Tel.: +31 (514) 56 18 54
 Fax: +31 (514) 56 38 98
 E-mail: nynke.vandenberg@gitc.nl

Submissions should be either as attached e-mail files or as two hard copies.

ARTICLES (Peer reviewed) should be 4,000-6,000 words long, although longer articles may be considered. Authors are responsible for ensuring that all manuscripts are typed accurately before final submission. Contributions are normally received with the understanding that they comprise original, unpublished material and are not being submitted for publication elsewhere. Articles will be refereed to ensure both accuracy and relevance and amendments to the script may be required before final acceptance. On acceptance, contributions are subject to editorial amendment. When time permits, authors will receive a copy of the final article before publication.

NOTES of approximately 1,500-2,000 words may be accepted if the subject does not lend itself to a full article. These will not be refereed but will be subject to editorial comment and amendments.

MEETING REPORTS. When appropriate, the Review may contain reports of relevant meetings.

BOOK REVIEWS are welcome. These should normally be approximately 1,000 words in length.

LETTERS TO THE EDITOR are welcome.

Layout of Articles

- Short title (up to 40 characters including spaces), subtitle (if desired), author(s) name(s) and affiliation(s)
- Abstract of approximately 100 words, outlining in a single paragraph the aims, scope and conclusions of the paper
- Main body of text, with sub-titles to emphasise changes of topic. Ideally in blocks of approximately 500 words
- References
- Appendices as required
- Illustrations in original form with captions, provided separately from the text. The use of coloured illustrations should be discussed prior to submission of the articles

References

Bibliographical references should be listed at the end of the articles in the standard Harvard

form. Footnotes should be kept to a minimum and the metric system used throughout.

Delivery of Material

Typescript: Deliver the manuscript on disc or by e-mail, preferably on Microsoft Word or RTF. Send an identical hard copy by mail or fax.

Illustrations: We prefer to receive hard copy illustrations (e.g. photographs, slides or negatives). If you decide to deliver digital illustration material, please note that the minimum resolution of the illustrations should be 367 dpi at reproduction size and conform to one of the following formats: TIFF, JPEG, BMP, GIF or TIF.

Reprints

Reprints of all articles (including articles published in earlier issues) can be ordered. For more information, please contact Nynke van den Berg at GITC.

Copyright

Any permission needed to incorporate material published elsewhere is the responsibility of the authors and it will be assumed that such permission has been maintained. The publisher is not responsible for statements made in the articles or advertisements nor is responsible for typing or converting errors. No material may be reproduced in whole or in part without written permission of GITC bv.

Subscription Information

The Journal is published three times a year by GITC bv and can be obtained regularly by subscription. Please find below the subscription rates:

	Europe	All other countries
1 year Individual	€ 61.00	US\$ 84.00
1 year Library	€ 78.00	US\$ 99.00

Should you wish to take out a subscription then please contact our Circulation Manager (jeroen.zaagemans@gitc.nl).