

ERRATUM

Granitoid plutons of the Brookville terrane, southern New Brunswick: petrology, age, and tectonic setting

CHRIS E. WHITE¹, SANDRA M. BARR², BRENT V. MILLER³, AND MICHAEL A. HAMILTON⁴

1. Department of Natural Resources, P.O. Box 698, Halifax, Nova Scotia B3N 2T9

2. Department of Geology, Acadia University, Wolfville, Nova Scotia B4P 2R6 Canada

3. Department of Geological Sciences, University of North Carolina, Chapel Hill, North Carolina, USA 27599-3315

4. Geological Survey of Canada, 601 Booth Street, Ottawa, Ontario K1A 0E8

Date received: August 27, 2002 *Date accepted: December 12, 2002*

Please note that Figures 1, 2 and 3 of White *et al.*, published in Atlantic Geology, Volume 38, No. 1, pages 54, 55, and 58, were printed with insufficient contrast. The figure and caption are reproduced here.

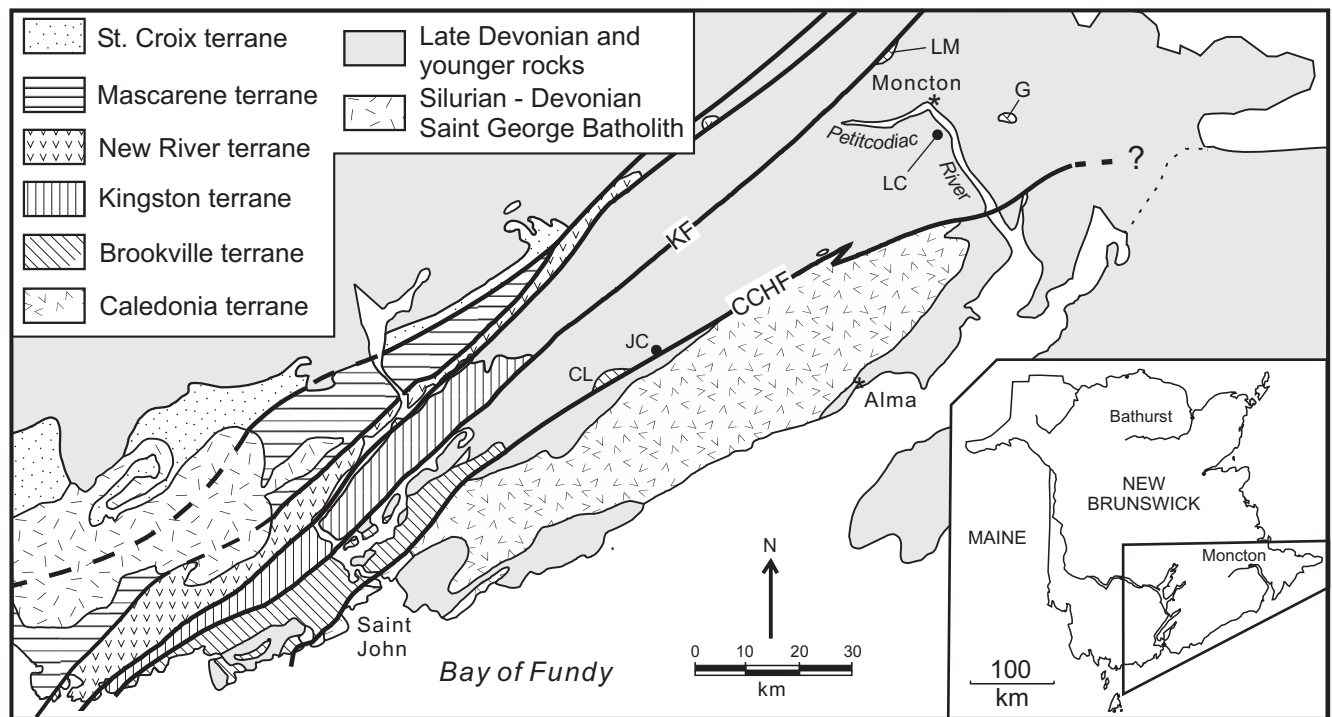


FIG. 1 Location of the Brookville and adjacent terranes in southern New Brunswick. Abbreviations: CCHF, Caledonia-Clover Hill Fault; CL, Cassidy Lake inlier; G, Gaytons Granite; JC, Jeffrey Corner inlier; KF, Kennebecasis Fault; LC, Lower Coverdale Gabbroic Complex (in subsurface); LM, Lutes Mountain.

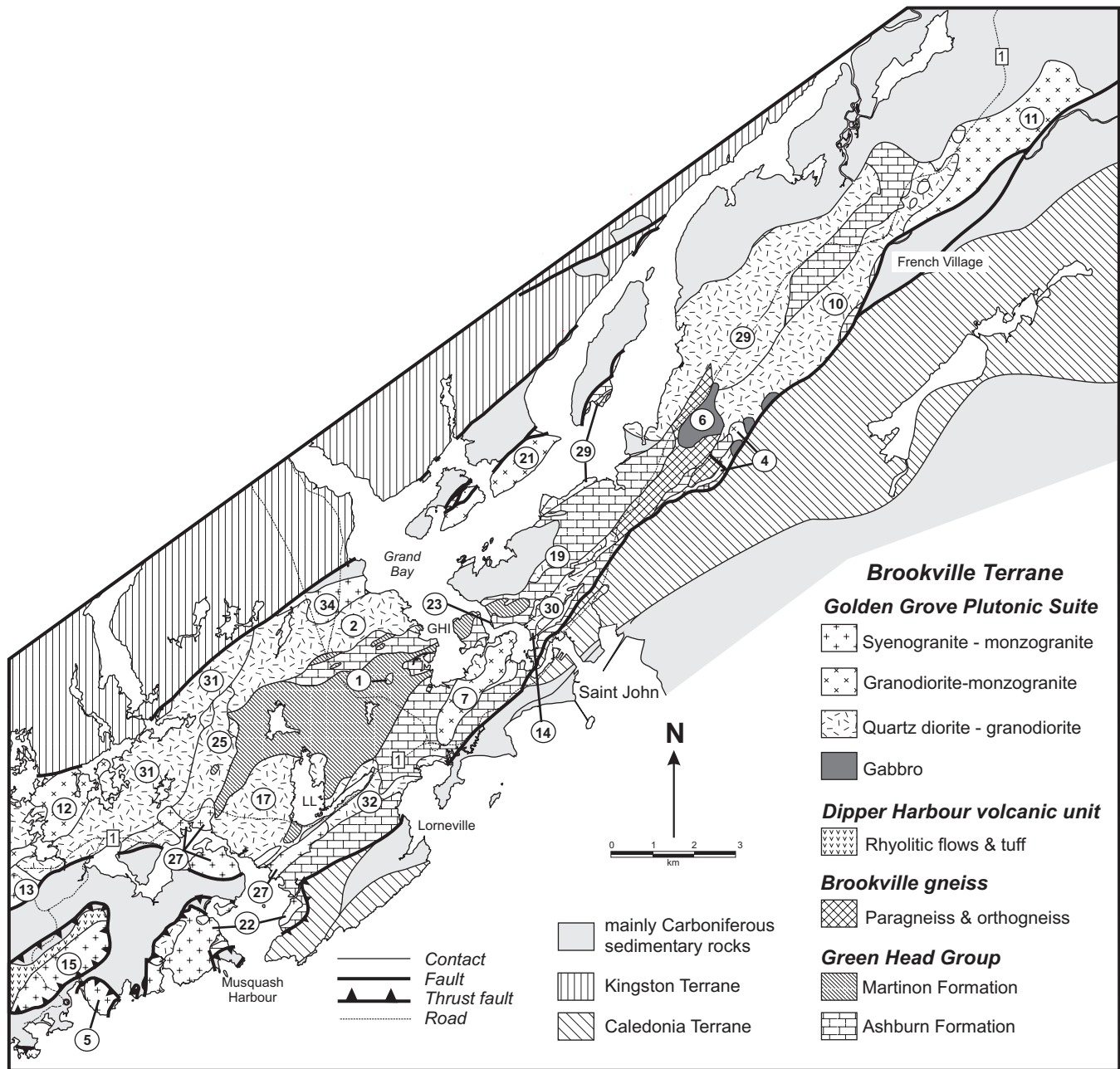


FIG. 2 Simplified geological map showing the distribution of major units in the central part of the Brookville terrane (Saint John area). Plutons are numbered - see Table 1 for names and brief descriptions. Abbreviations: GHI, Green Head Island; LL, Ludgate Lake.

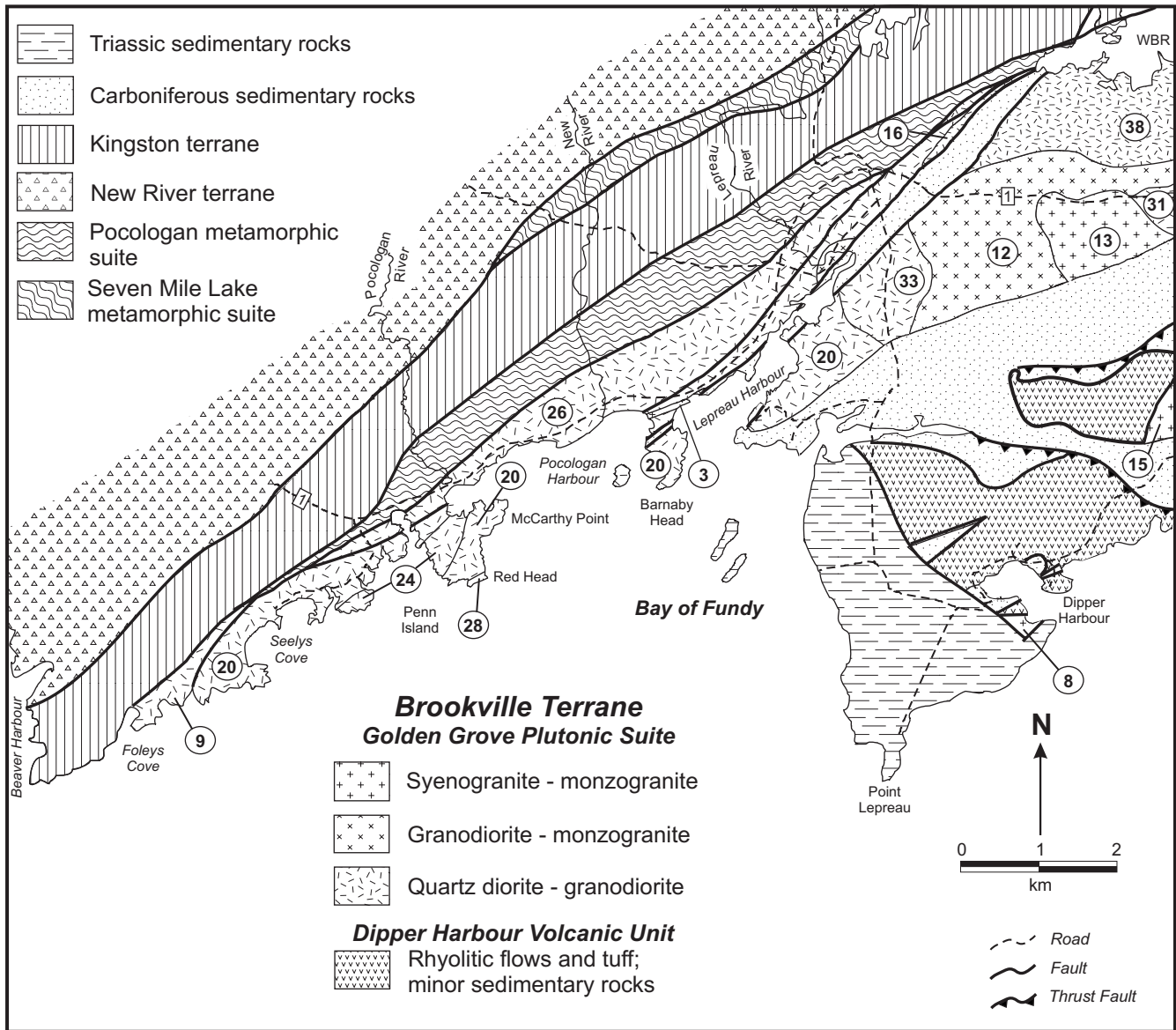


FIG. 3 Simplified geological map showing the distribution of major units in the southwestern (Pocologan) part of the Brookville terrane. Plutons are numbered - see Table 1 for names and brief descriptions.

